

**G 31**

*February 6 2012*

*February 6 2012*

**etsab**

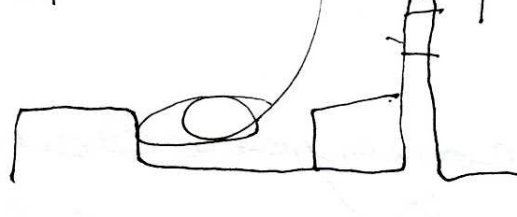
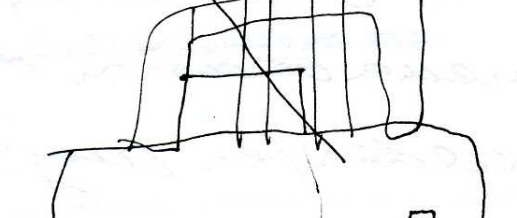
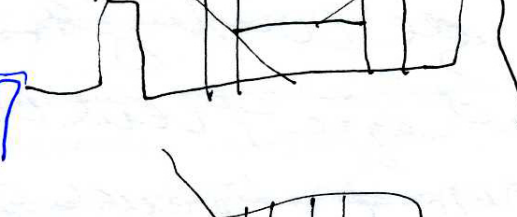
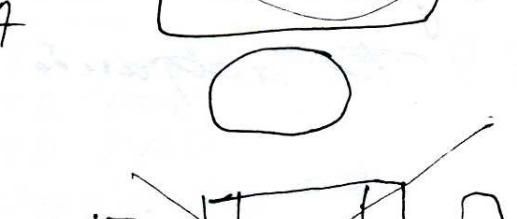
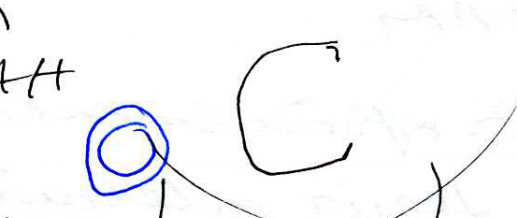
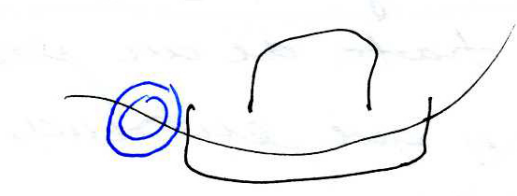
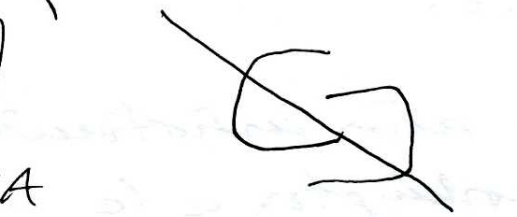
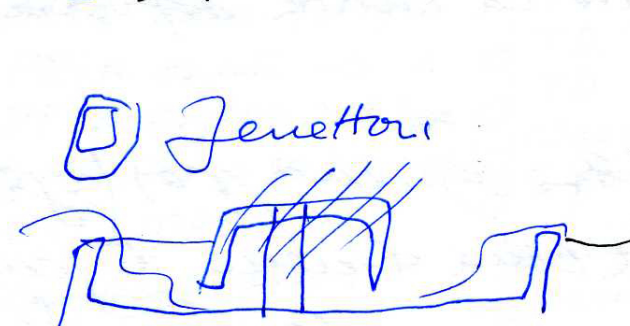
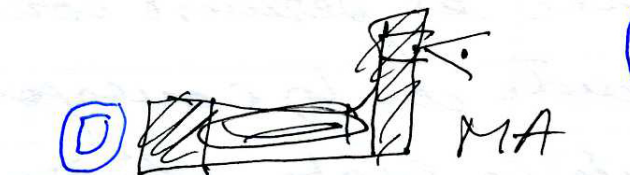
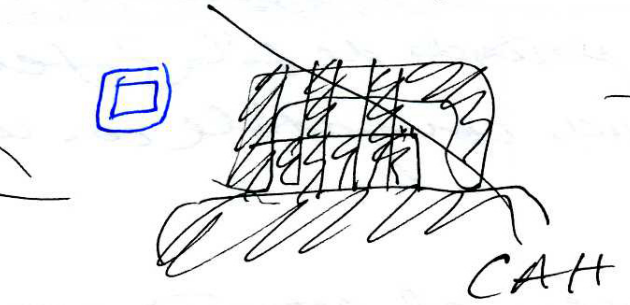
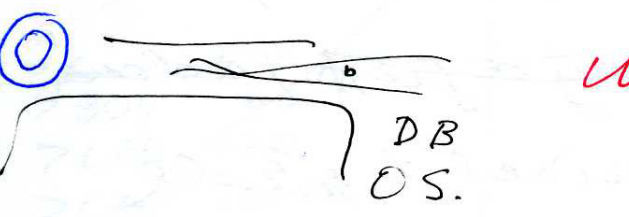
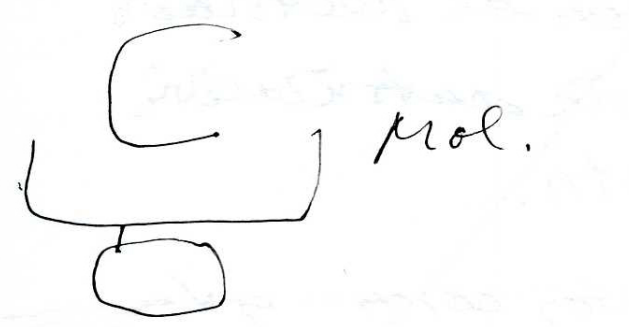
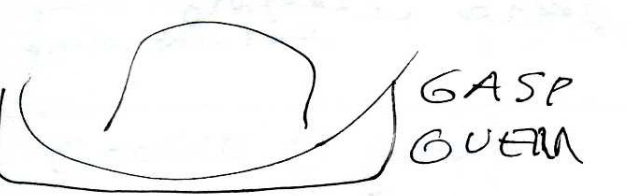
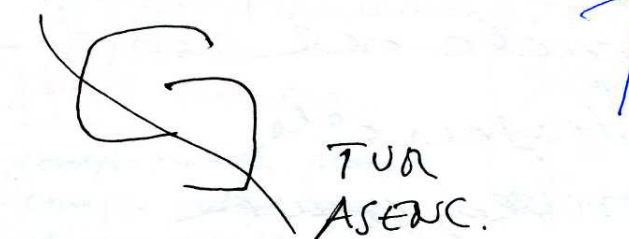
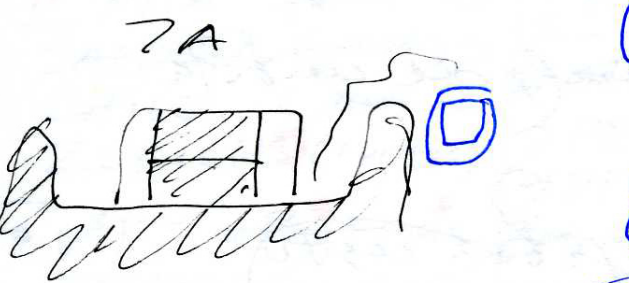
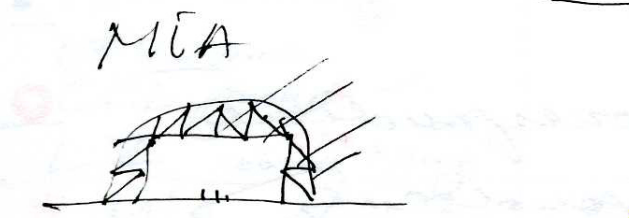
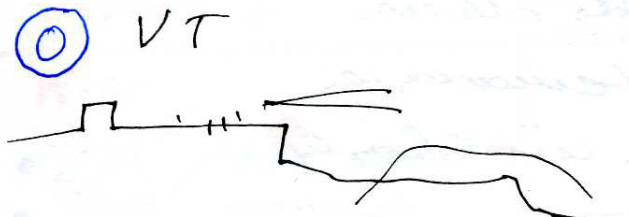
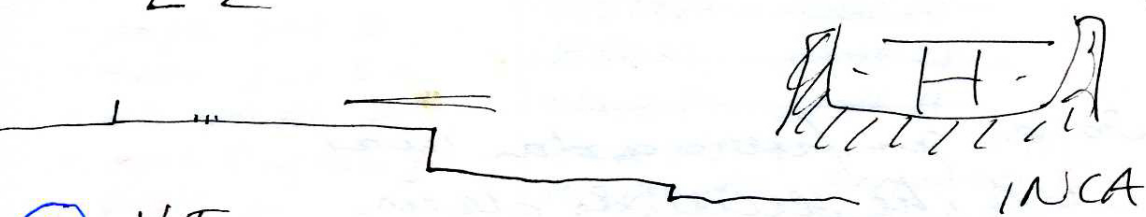


**ARQUITECTURA**



LZ

BV



Casa Pompeyans

Janagon

Sejima

owen williamy  
diez de libe

ubetvix

24 febrero 2012  
3 abril 2012

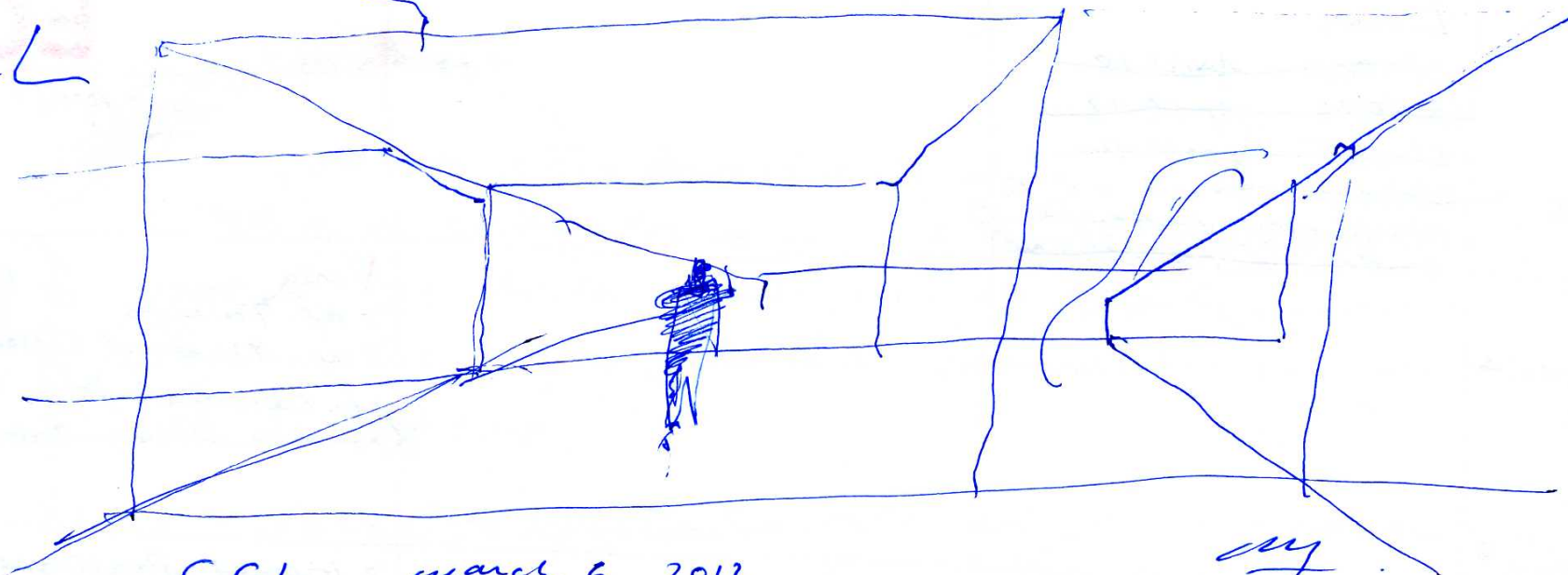
machuca

uier  
libere

- 4 (ohick spain — DB /
  - gasa — ruto /
  - moliner — guerrero /
  - Vthillo — ..
  - LZ, EC. /
- 
- 4 (Jenetton — Pmilano /
  - Cañu —
  - ma — m. Benz /
  - ZA — inca /



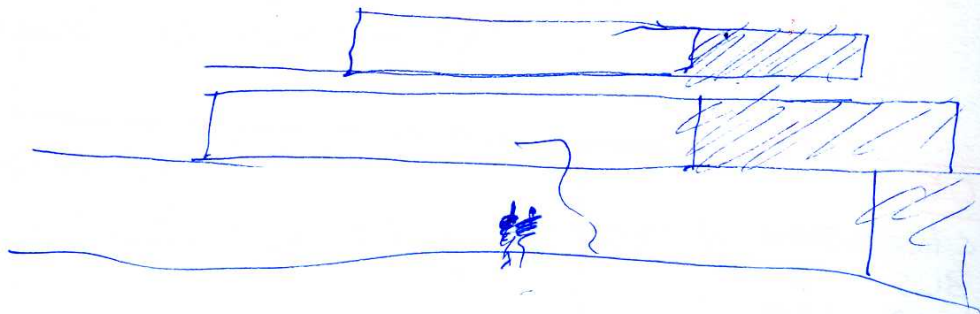
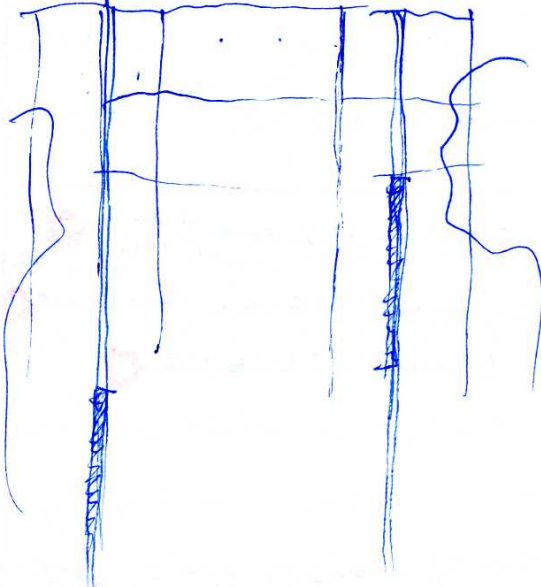
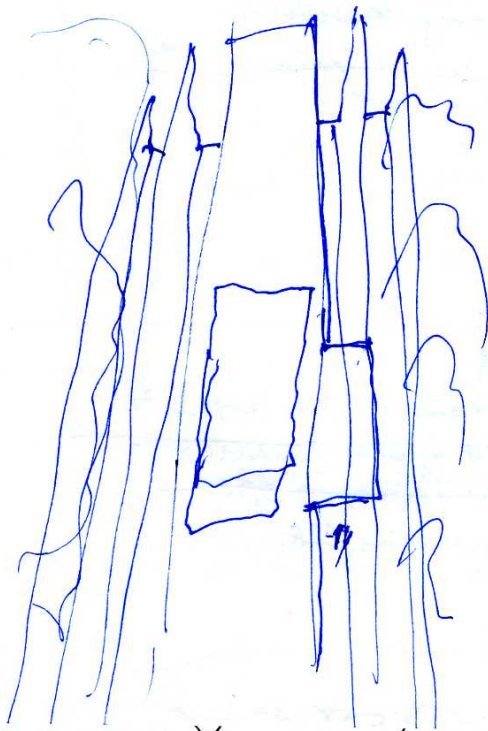
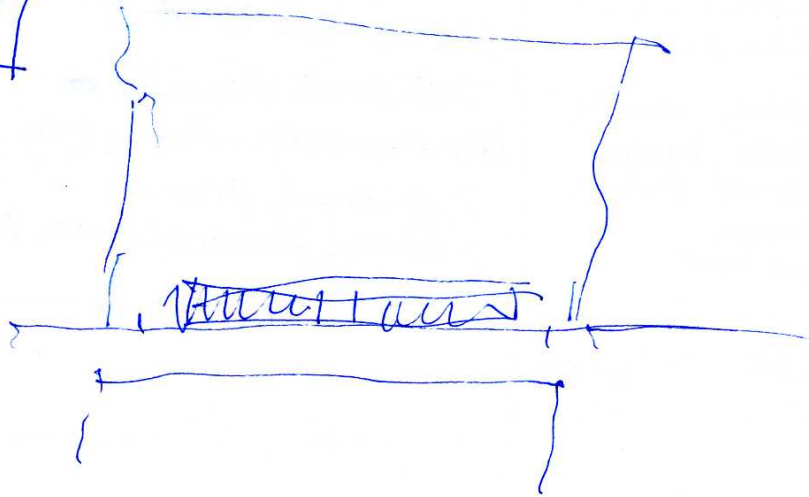
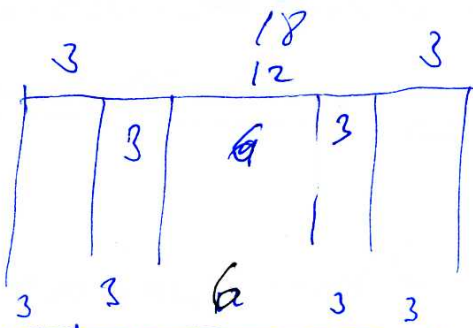
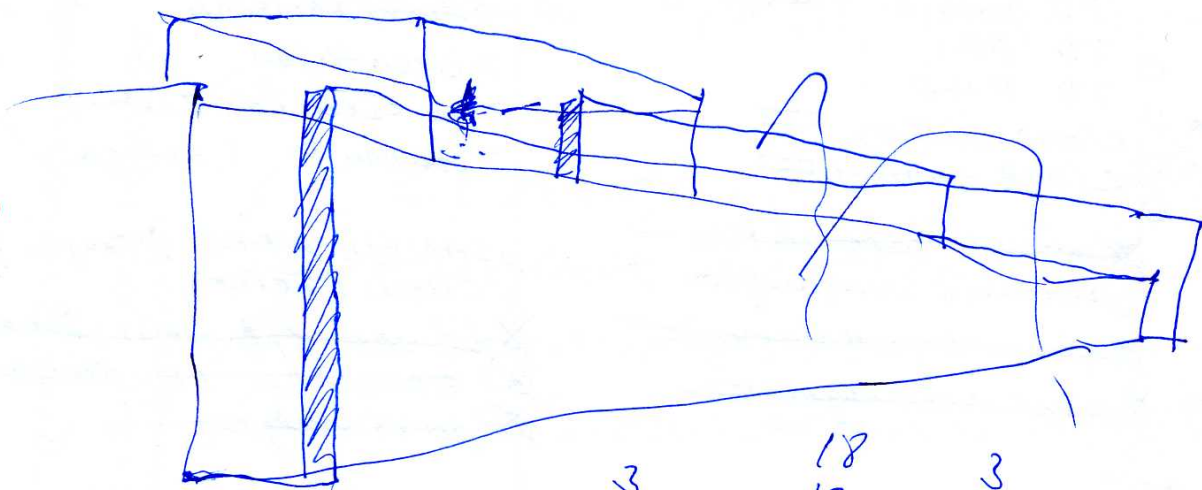
CL

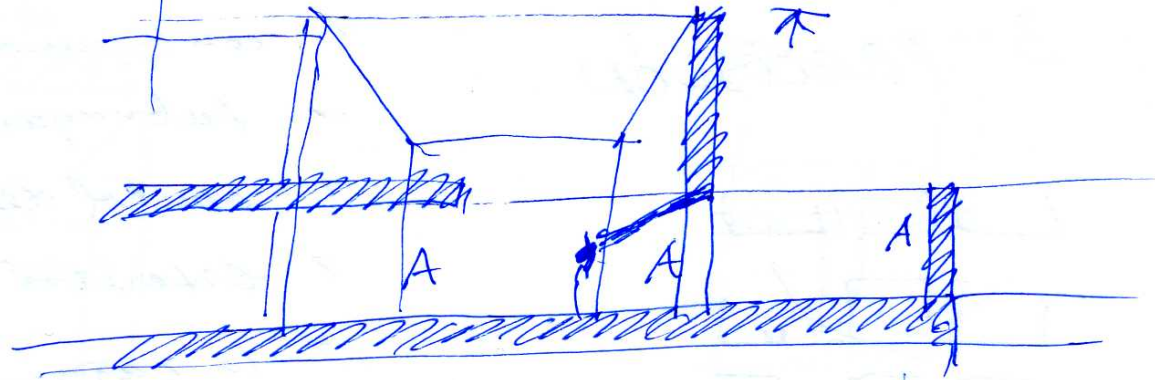
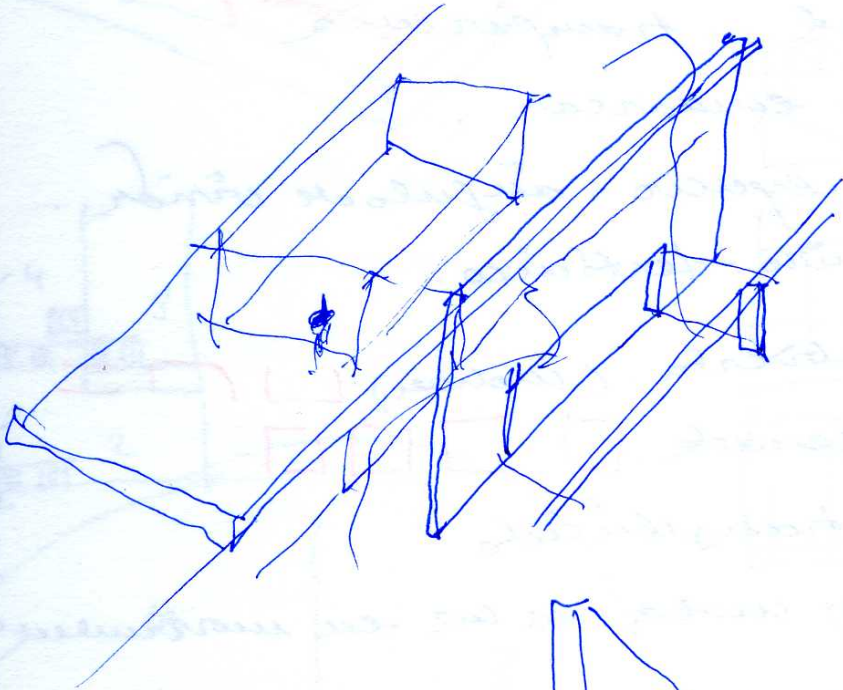
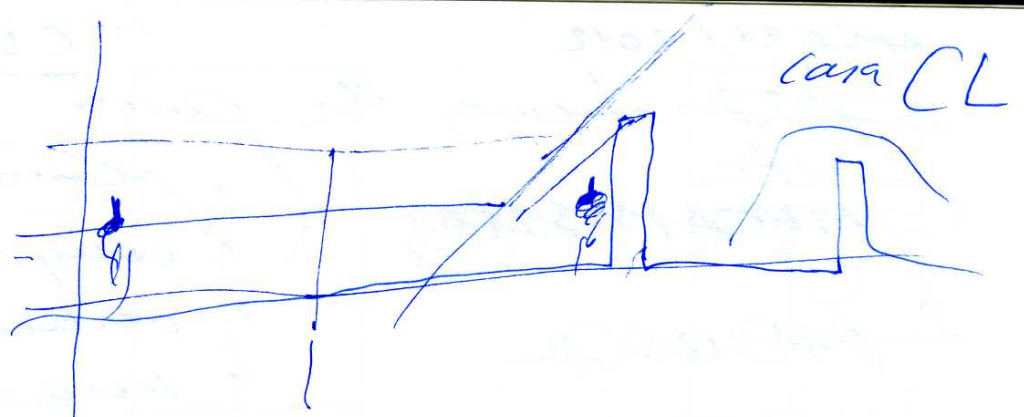
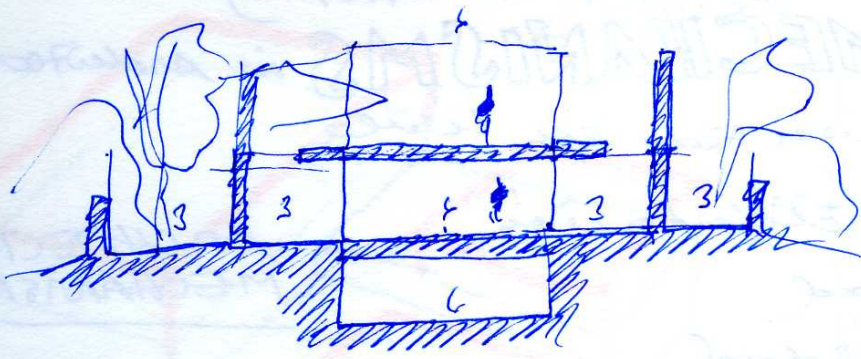


CCL march 6 2012

my

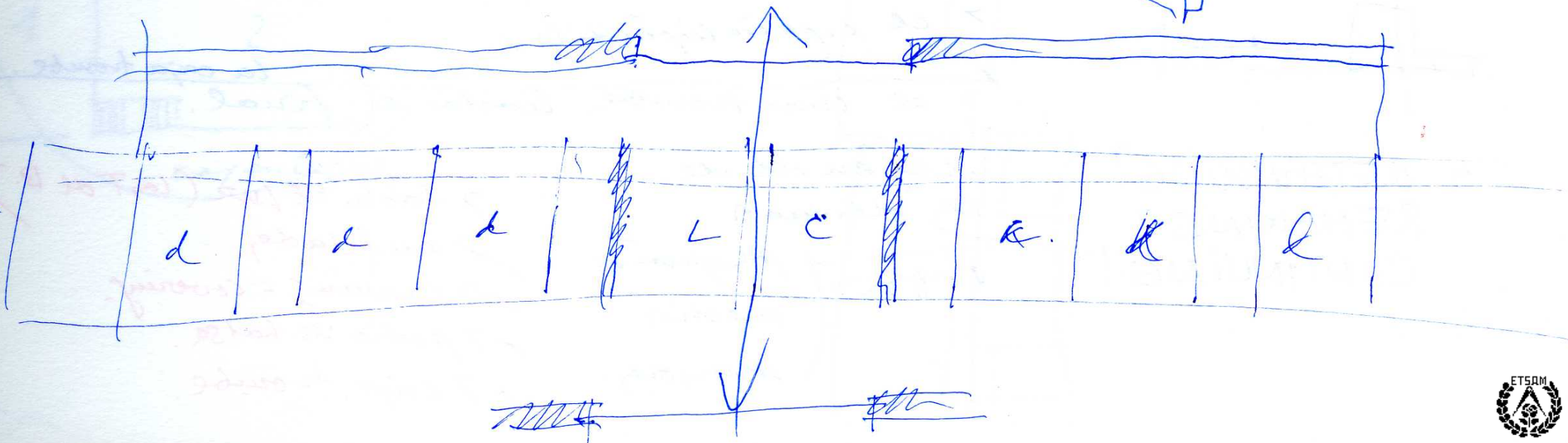
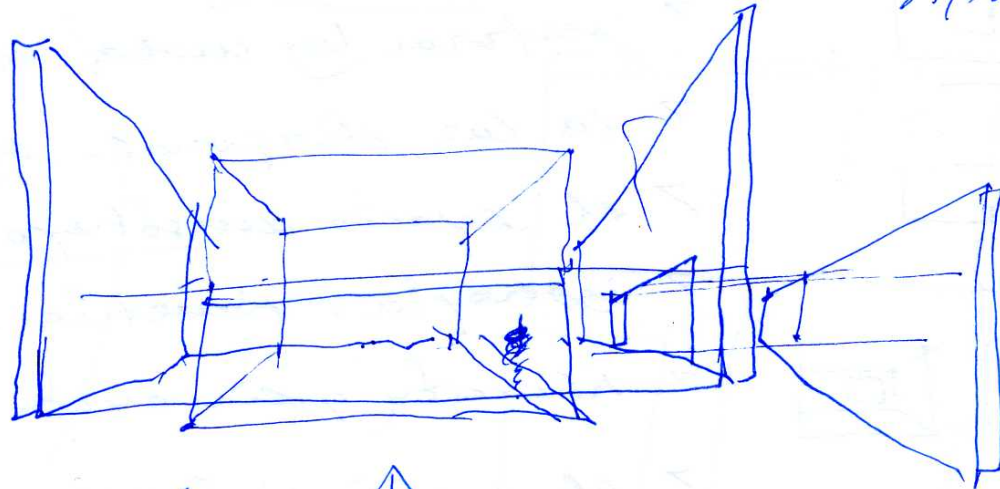
6





April 14. 2012

7



April 21 / 2012

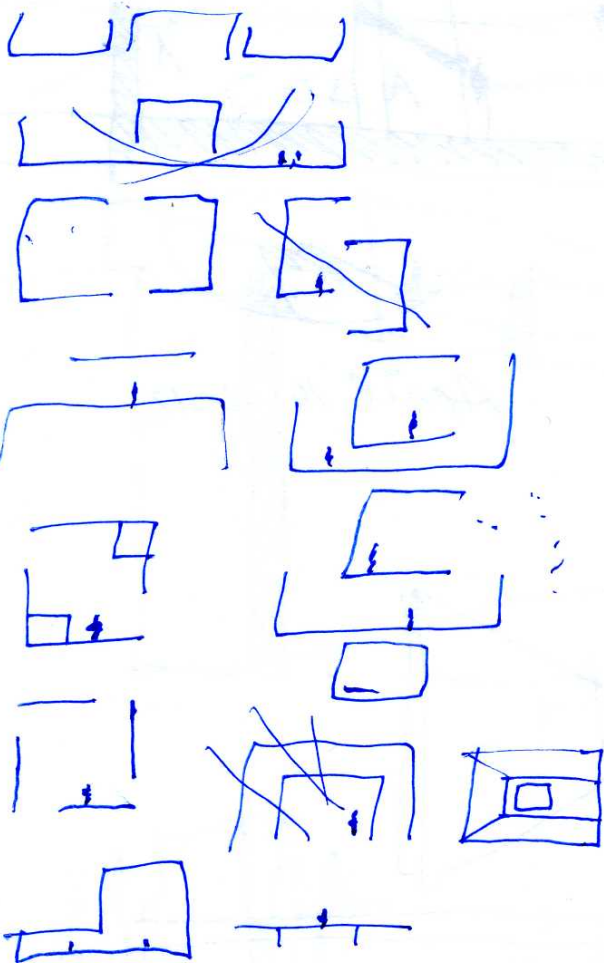
CUA *mechanisms in architecture*



# MECHANISMS in Architecture

1 MECANISMOS

2 ~~ARMONIA~~

3 PRECISIÓN



- ▷ plano convertido en línea
- ▷ compresión dilatación
- ▷ verticalidad
- ▷ horizontalidad
- ▷ continuidad . transparencia
- ▷ subrayar - enmarcar .
- ▷ control del espacio - ángulo de visión .
- ▷ estereotomía - fectados .
- ▷ la caja abierta . (moliner) 
- ▷ la caja cerrada . 
- ▷ el espacio translúcido
- ▷ perforar los umbra . la luz en movimiento
- ▷ la luz diagonal - espacio diagonal
- ▷ el espacio anisótropo .
- ▷ isotropía . simetría .
- ▷ situación y dimensión de los espacios cerrados .
- ▷ el espacio lipóstatilo .

## ARCHITECTURAL MECHANISMS.

▷ qué tan escalera  
▷ poner la escalera  
▷ limpiar gaspar  
▷ qué tan escalera  
▷ poner la escalera  
▷ limpiar gaspar  
▷ qué tan escalera  
▷ poner la escalera  
▷ limpiar gaspar

▷ el muro trombe hasta el final. *la caja trombe.*

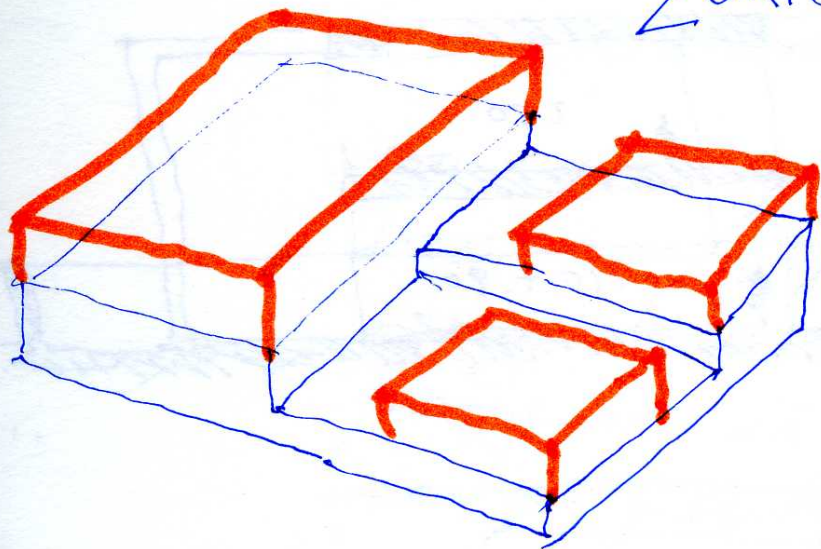
4 RETHINKING?  
REMAKING?  
CONTINUING!

depende de  
los alumnos

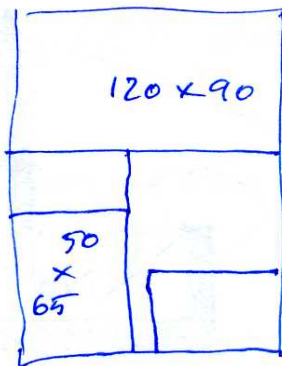
si son (pequeños  
medios  
mayores)

- ▷ tablas de luz (las T de B.)
- ▷ enfilades .
- ▷ carving - covering .
- ▷ podio vs. balsa .
- ▷ caja trombe .

ZÜRICH April 21 2012

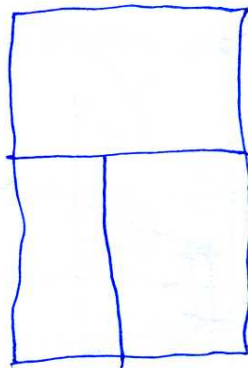


200

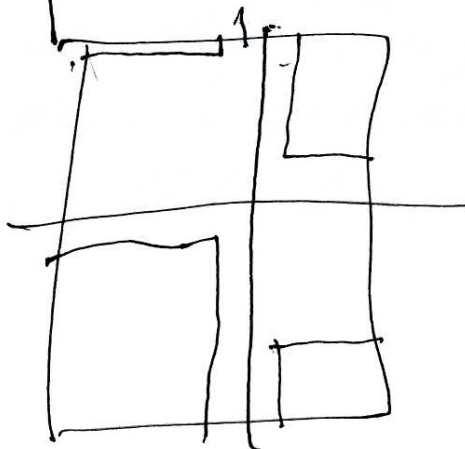
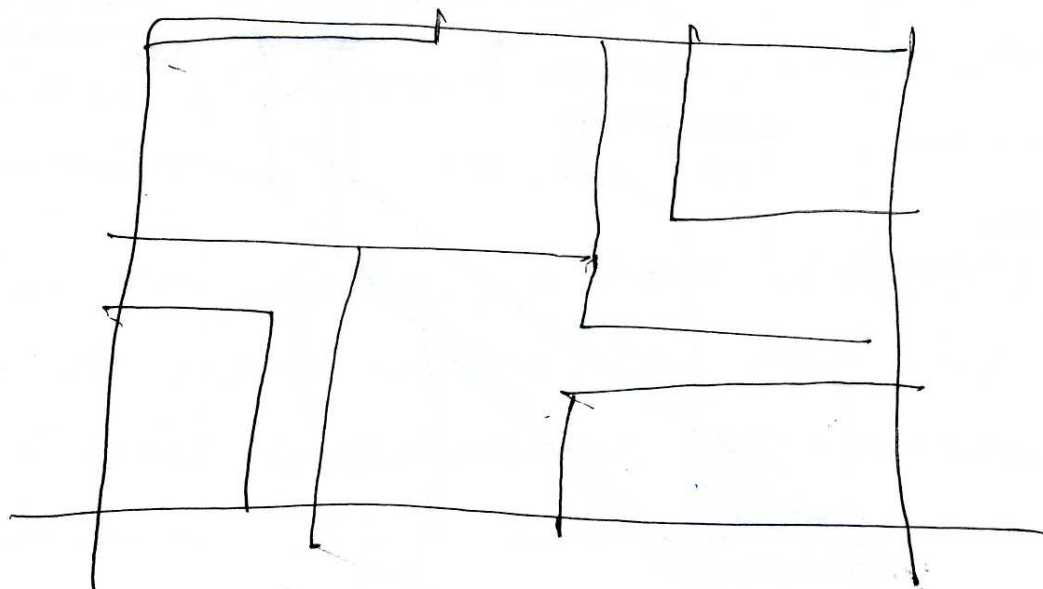
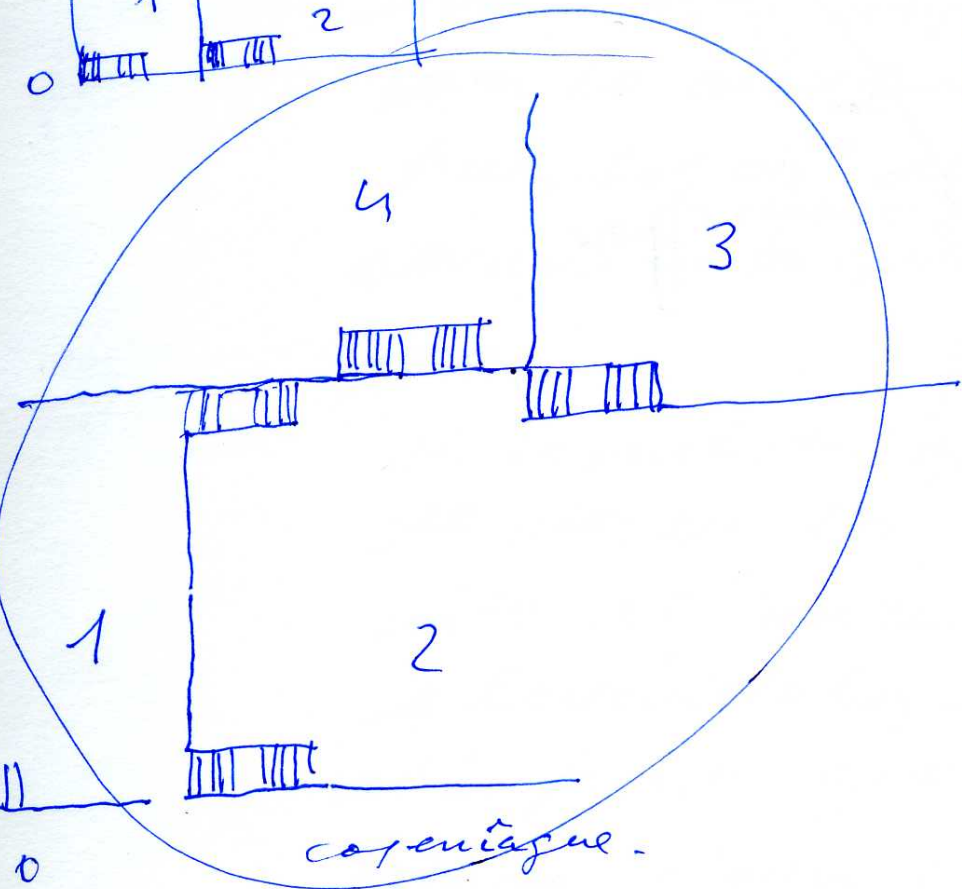
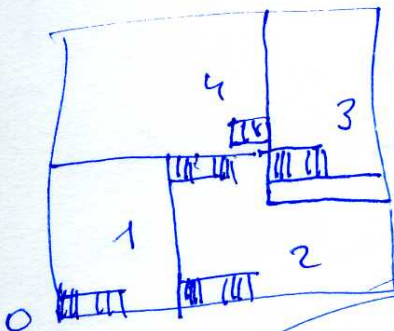
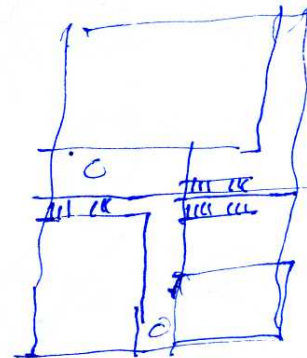
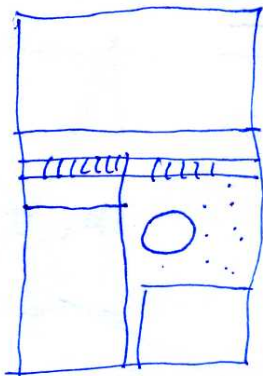
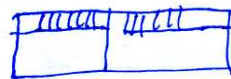
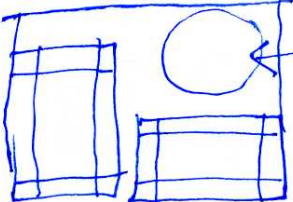
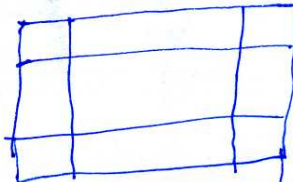
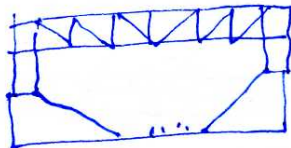


120x90

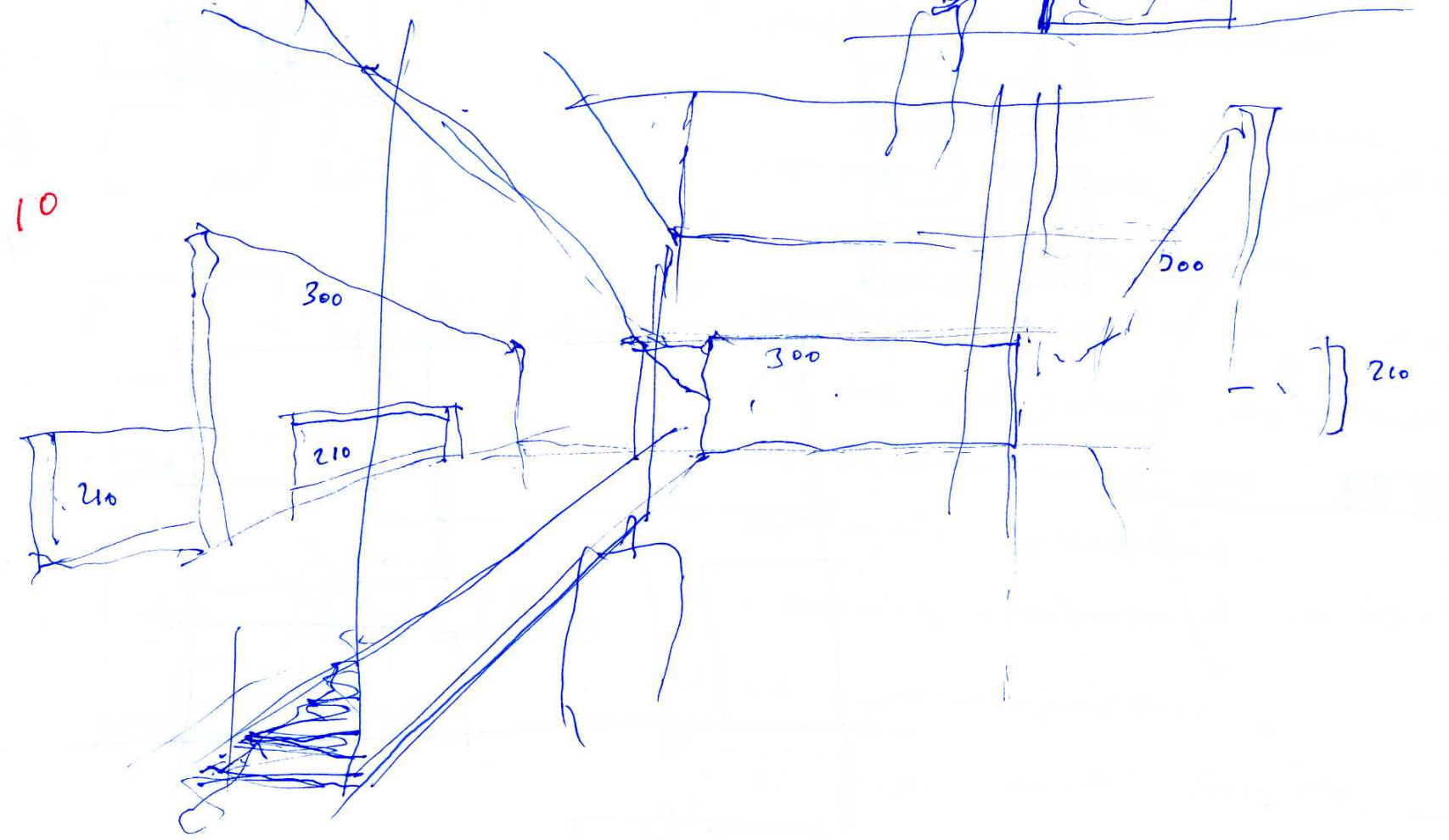
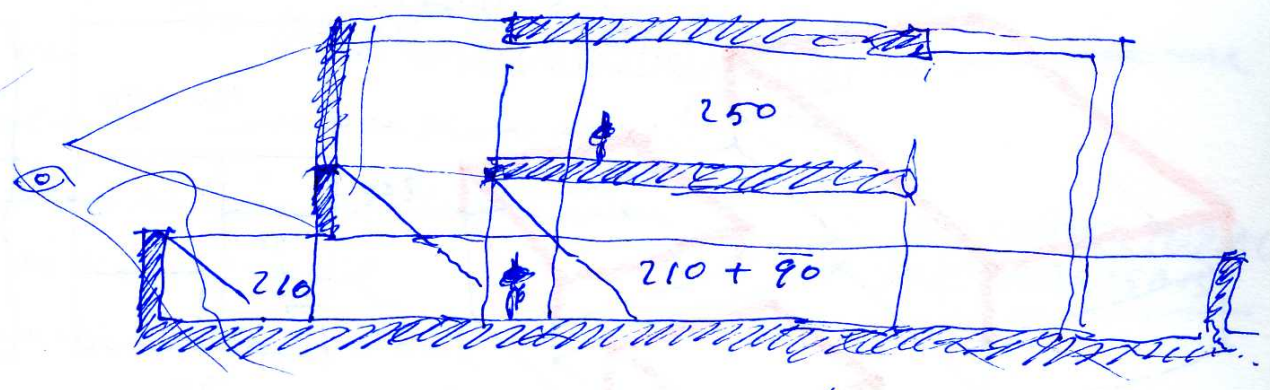
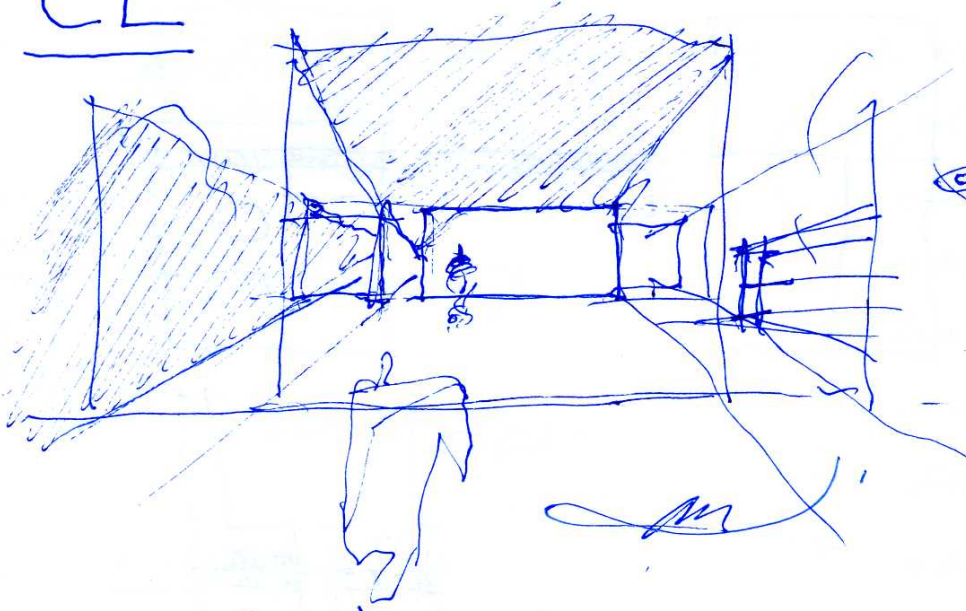
50  
x  
65



140



CL



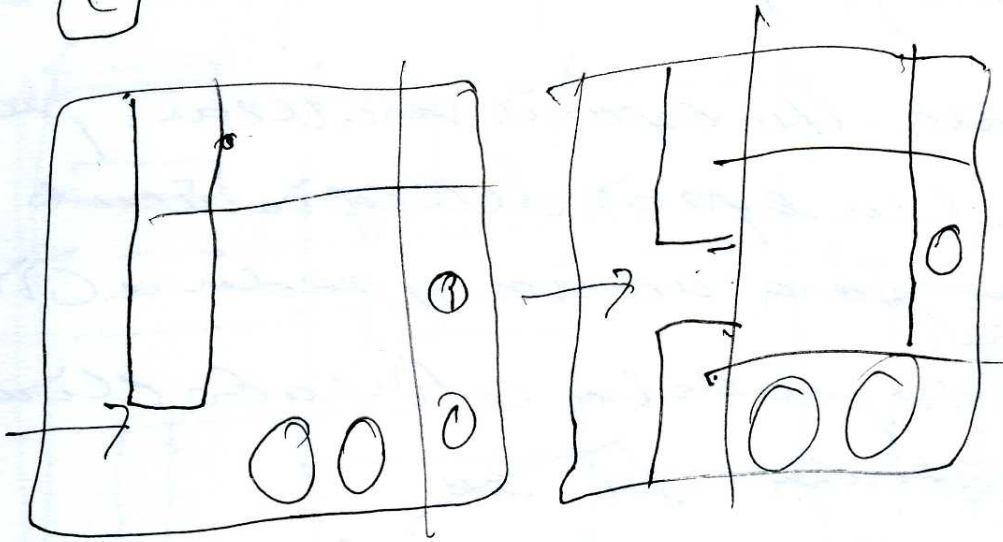
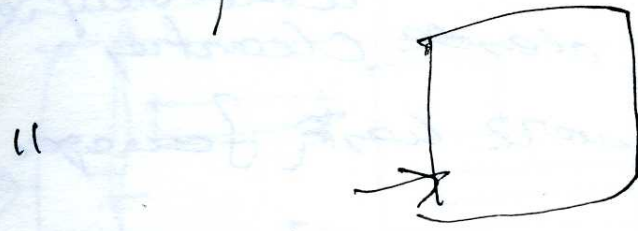
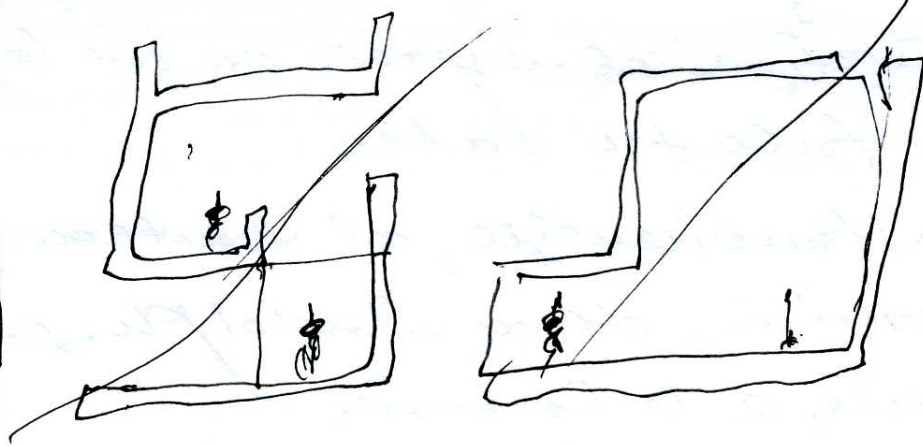
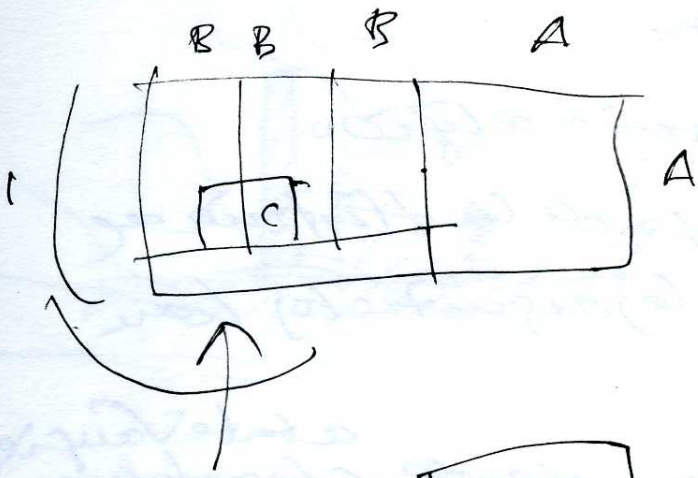
10

Casa Carvajal (caños) / 12. abril 2012.



CUA

CASA

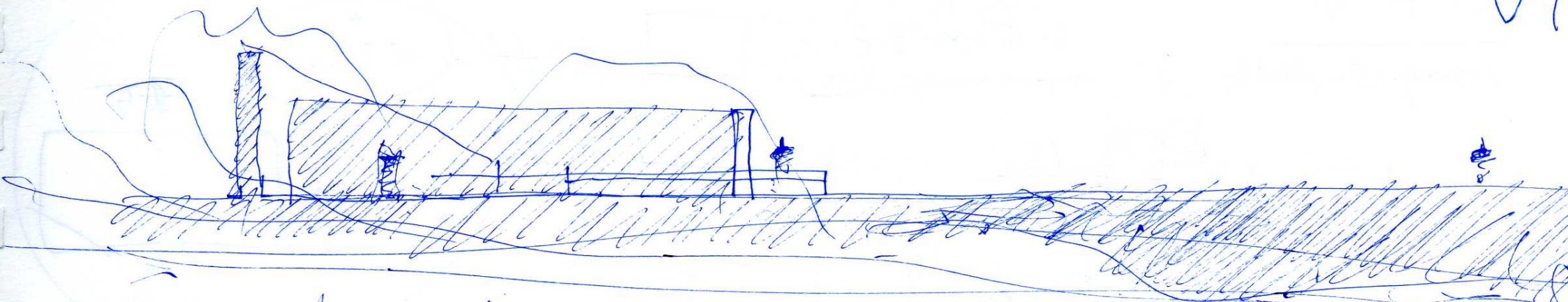


posibles temas

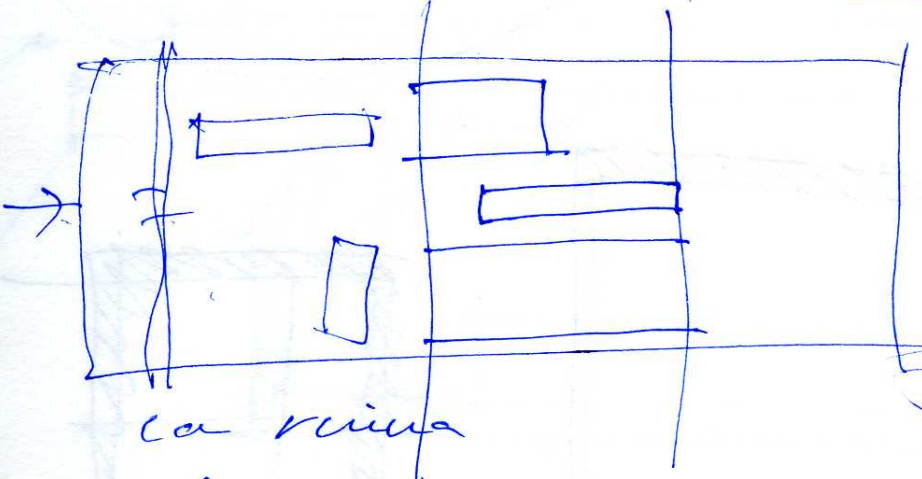
- 1 > casa /
- 2 > capilla / iglesia,
- 3 > mecano.
- 4 > rethinking the city.
- 5 > memoria

Abr. 28. 2012

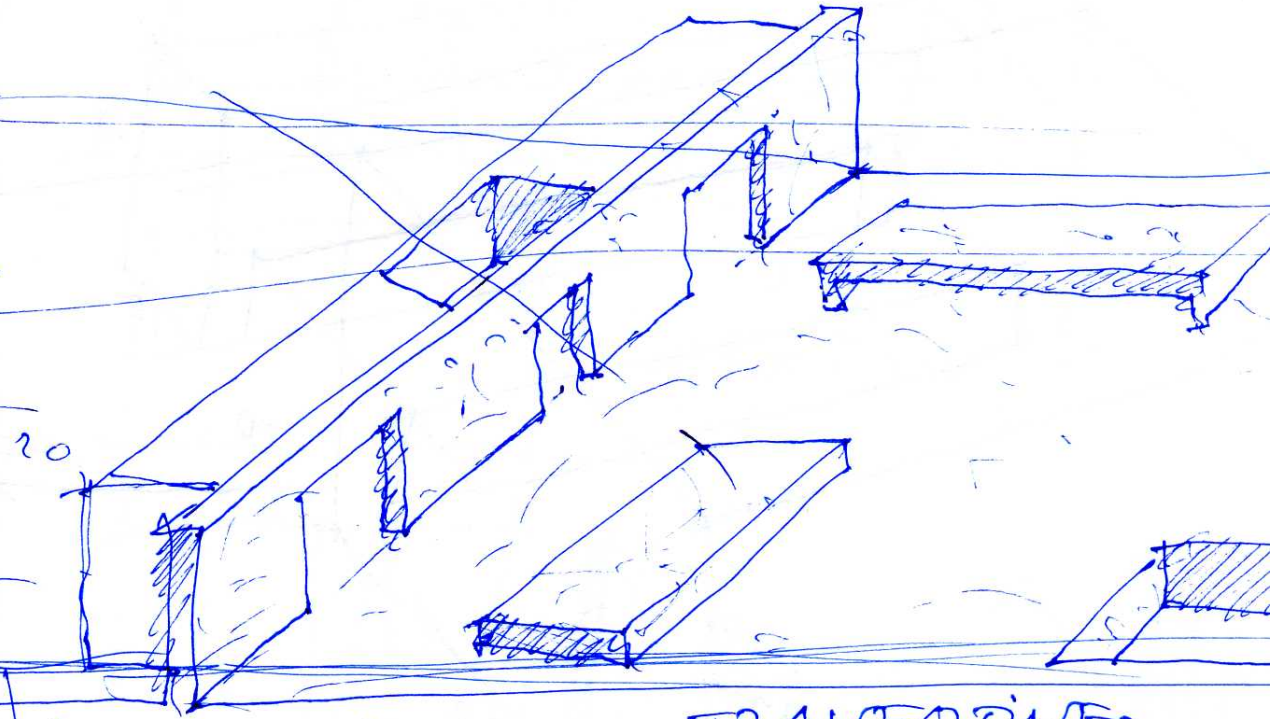
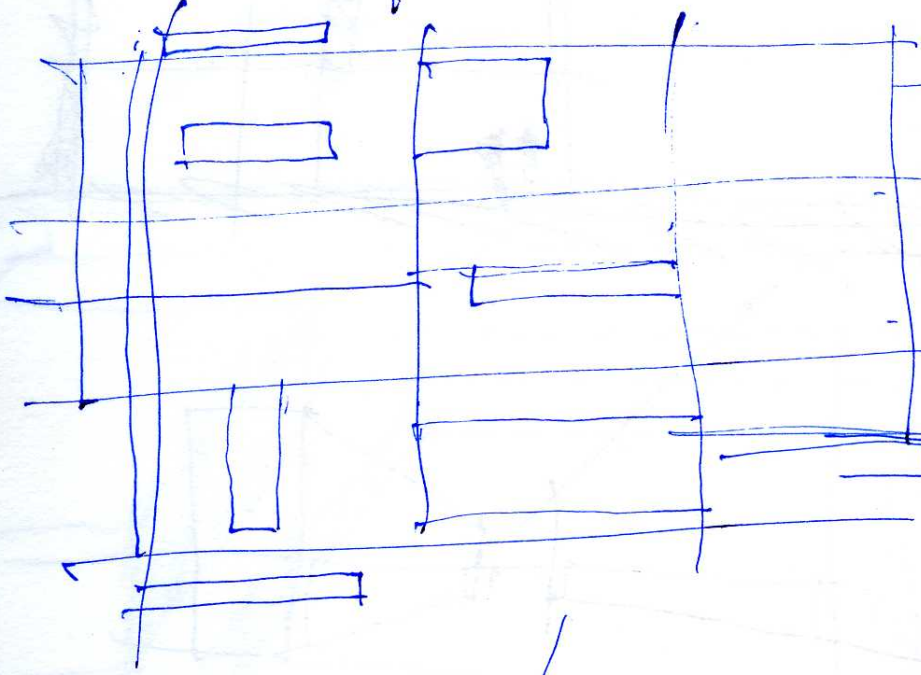




April 30, 2012



ca ruina



ROMAN VIN.

TRAVEERTINE

> las dudas son si los 2 muros laterales son (curvados -  
 si ponemos mesa + banco grande.  
 si abrimos huecos grandes o pequeños en el muro. etc etc  
 1 mayo 2012

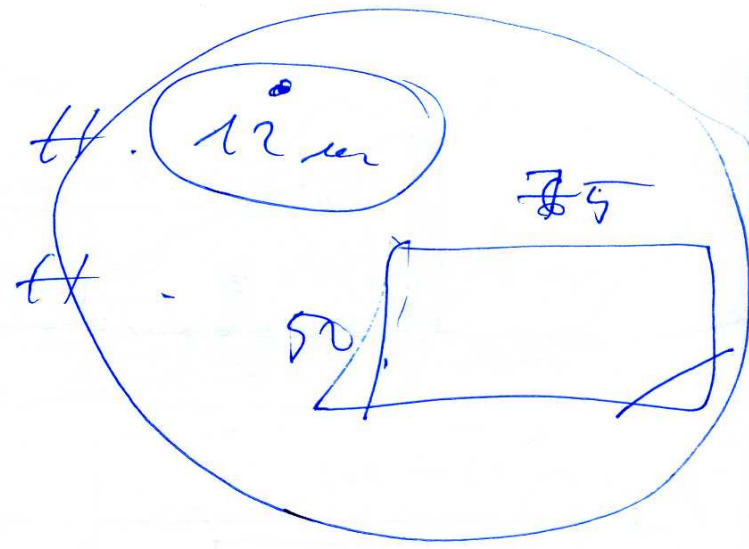
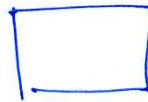
UFV

may 3. 2012.

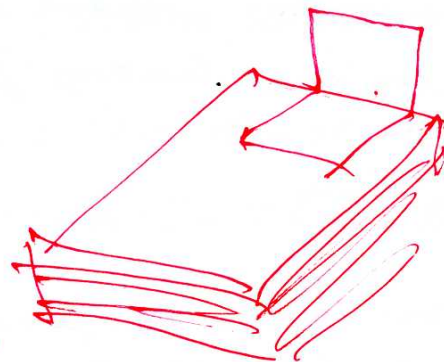
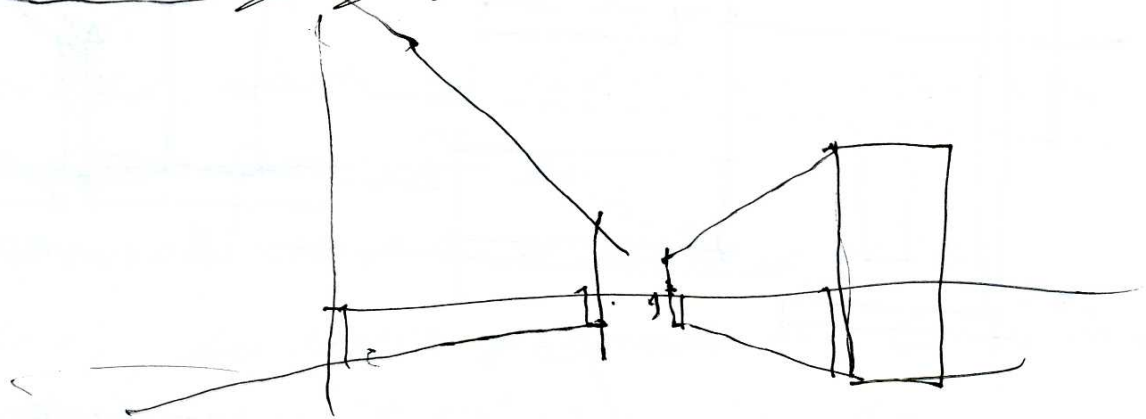
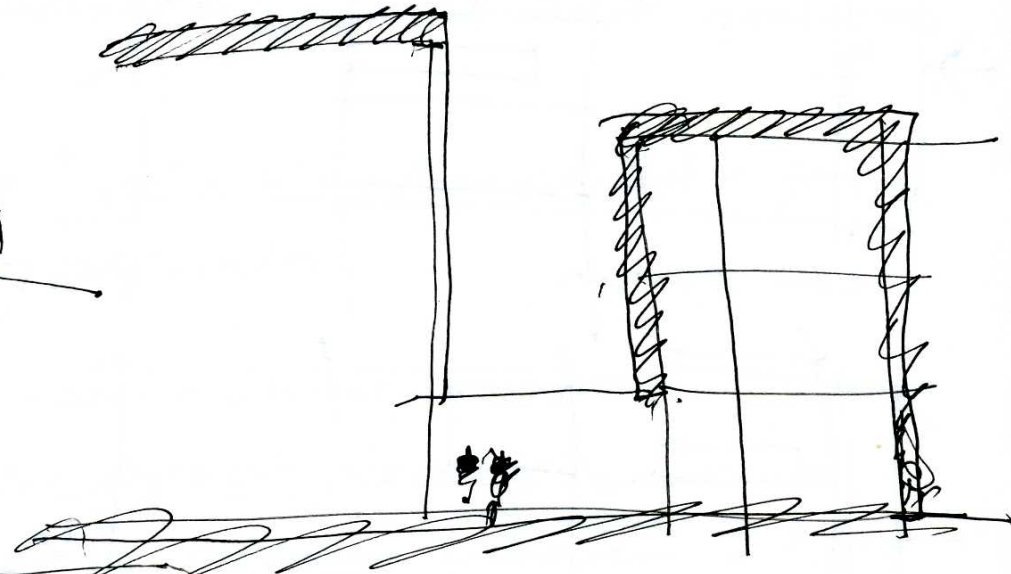
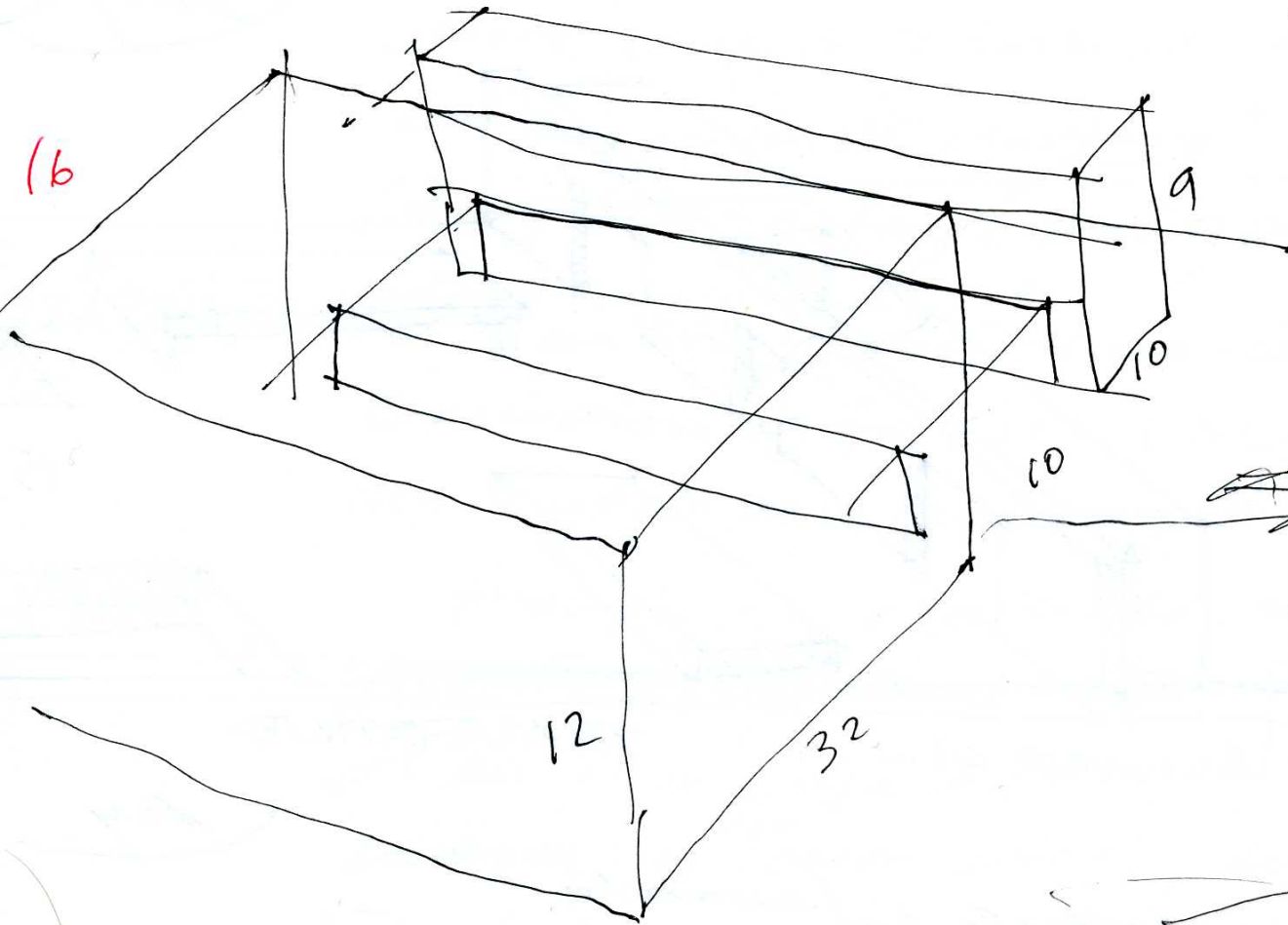
$65 \times 32$

$65 \times 10$

area  $80m^2$



(b)

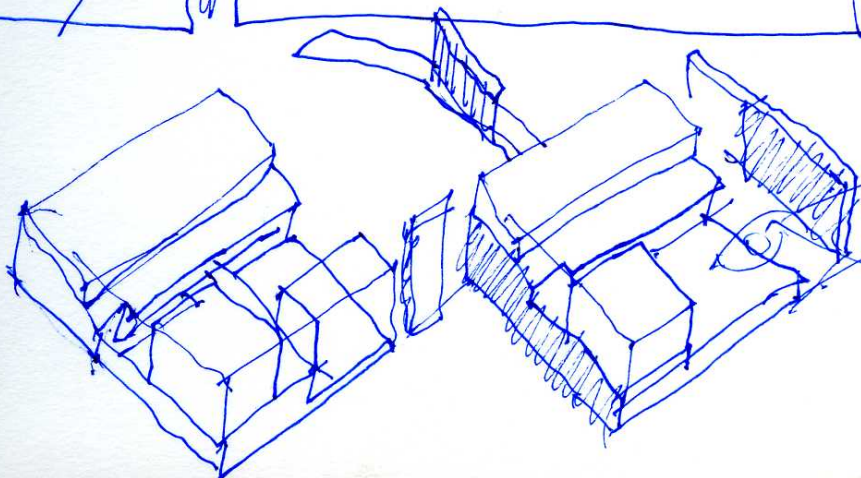
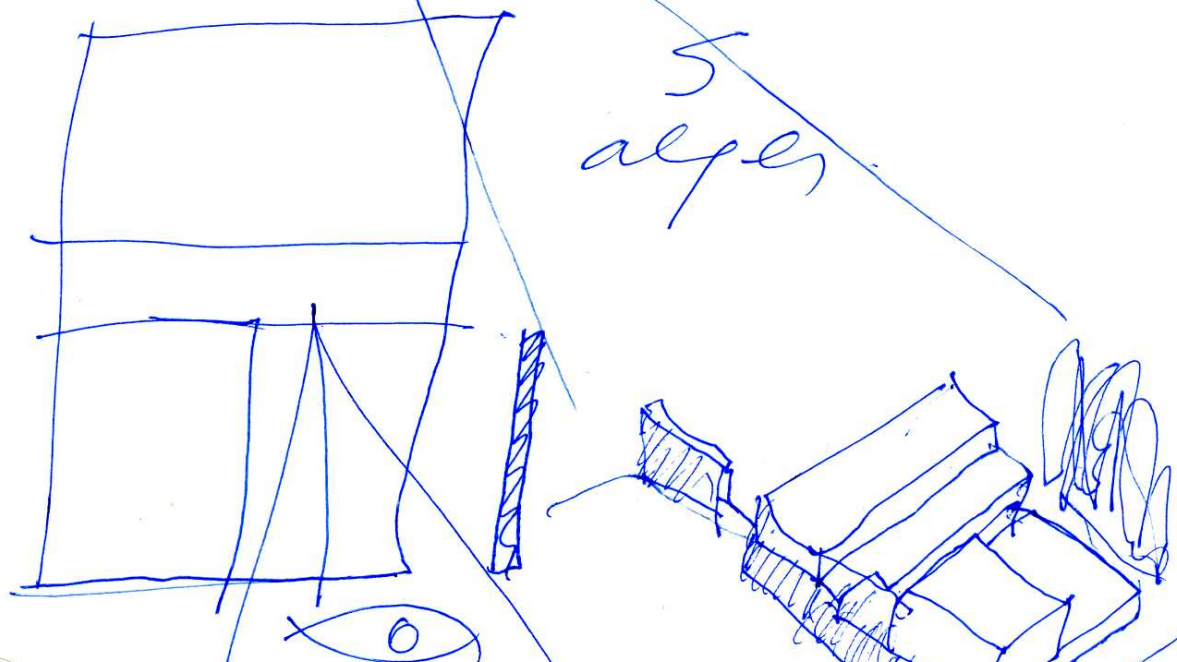
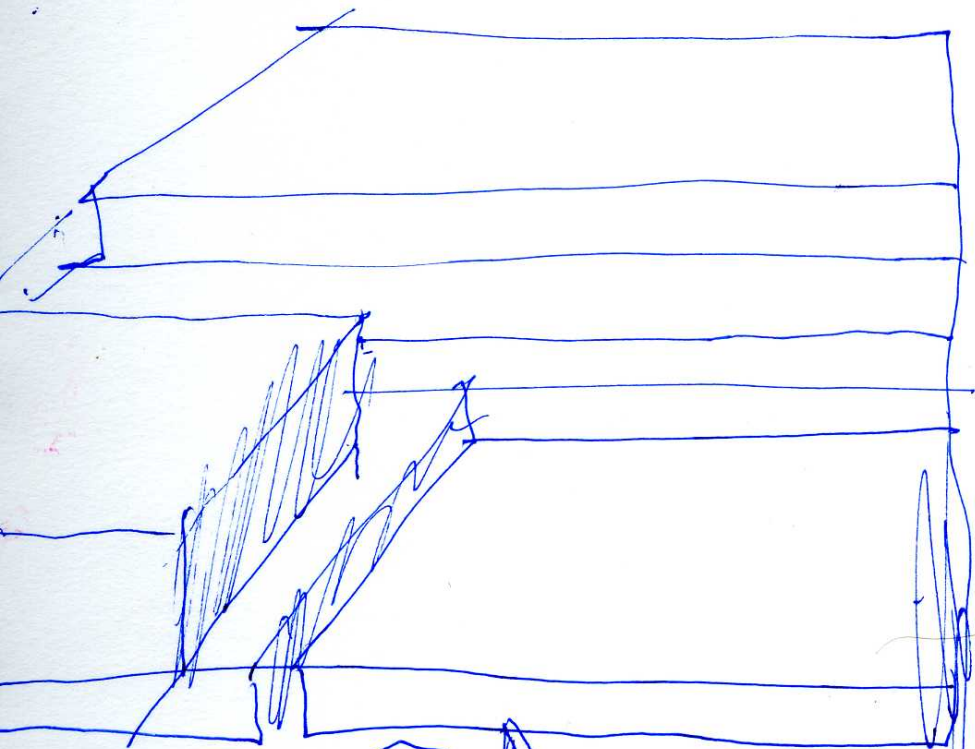
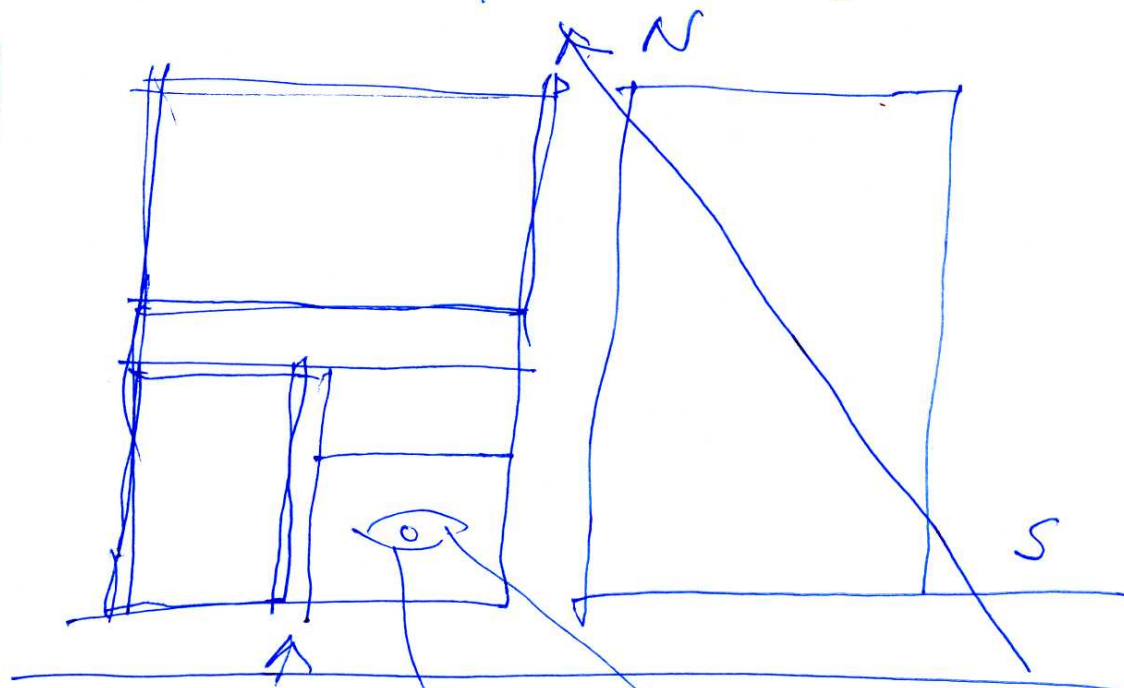
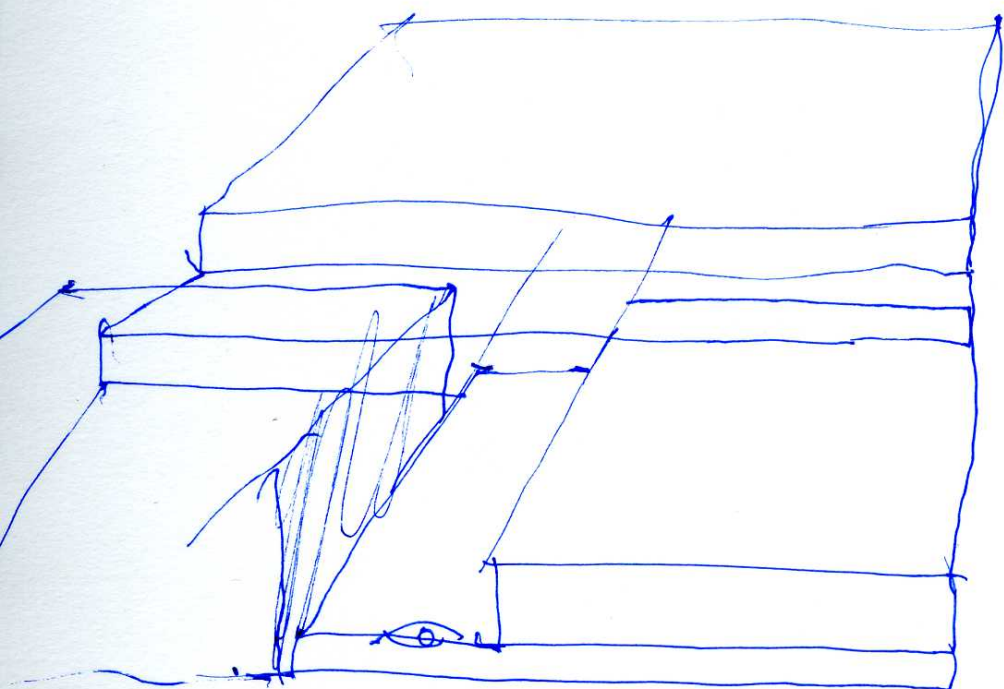


Plan  
an  
ENGLISH  
VERSION

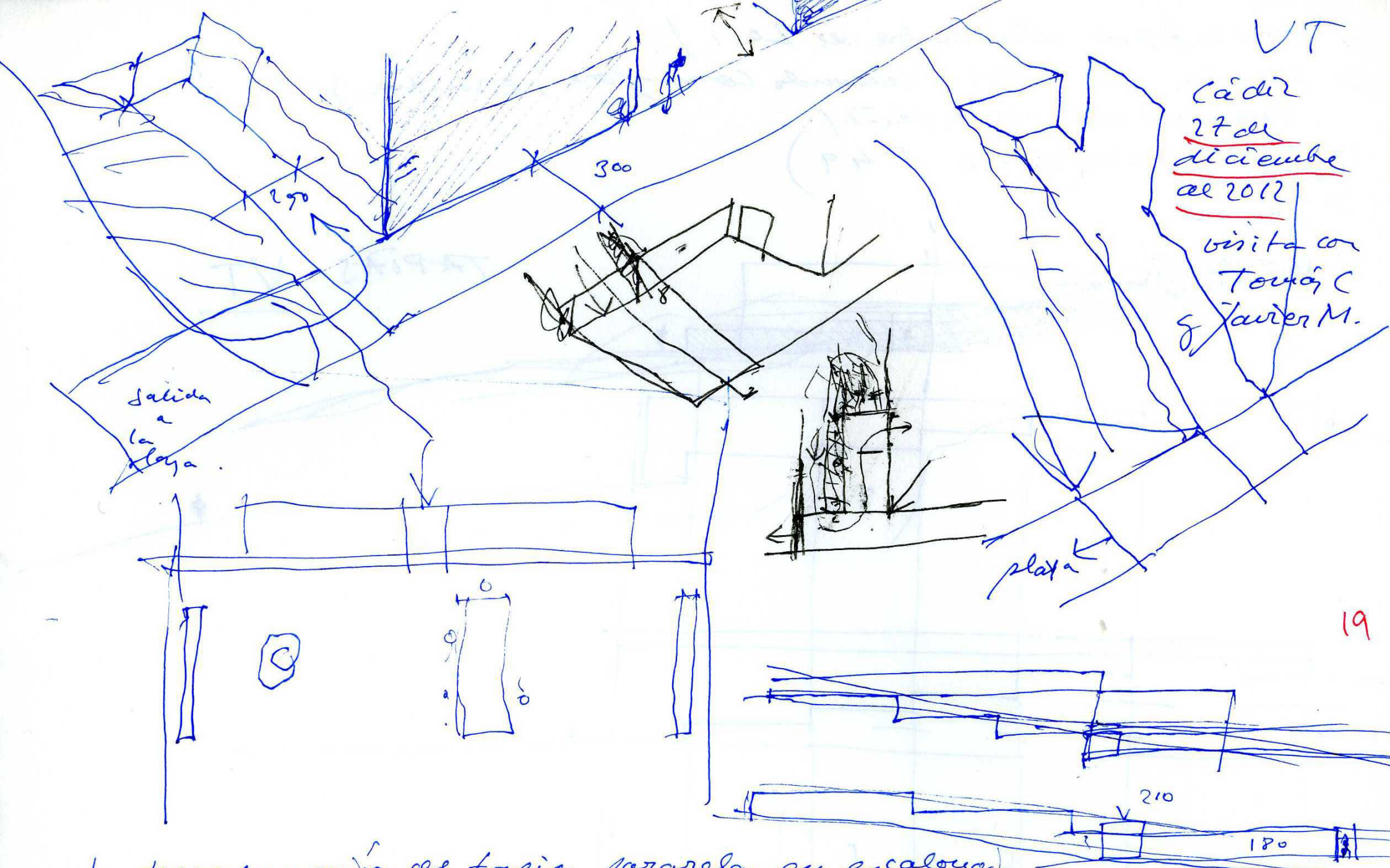


# ZÜRICH

trabajo de taller 14 mayo 2012



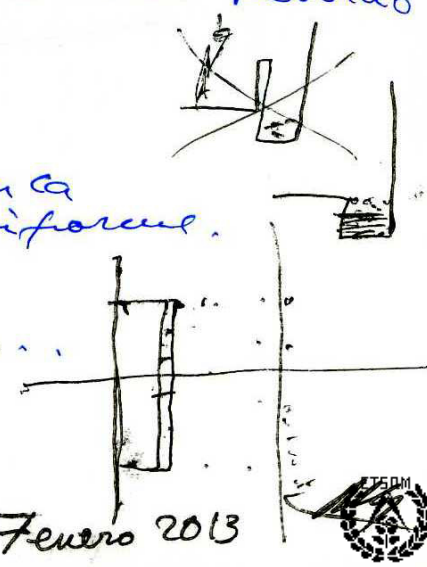
(- visada de los ALPES.  
- programa extenso  
- retanques a cuylir.  
-> abrirse a N-S <



VT  
 Cádiz  
27 de  
diciembre  
de 2012  
 visita con  
 Tomás C  
 y Javier M.

19

- 1 transformación de tapias paralelas en escalonadas
- 2 acuerdos de tierra para ir de entrada general a entrada ferris
- 3 definición de acera
- 4 terminar de decidir travertino.
- 5 terminar de definir cobra-CA Pri-chacon + blanca + uniforme.
- 6 encuentro travertino zócalo con acera  
travertino zócalo con tierra-grava...
- 7 valla de entrada - caseta.
- 8 árboles - arbustos en 'lobacos'
- 9 piedra angular.



Febrero 2013



- > Hoy 4, 30 de diciembre de 2012 /
- > son las 10:30 PM / cuando con Jose, Emilia y yo /  
bramam / ut. / no es fácil /
- > (ver libreta (ESPASA P 49))
- >

TAPIAS VT

