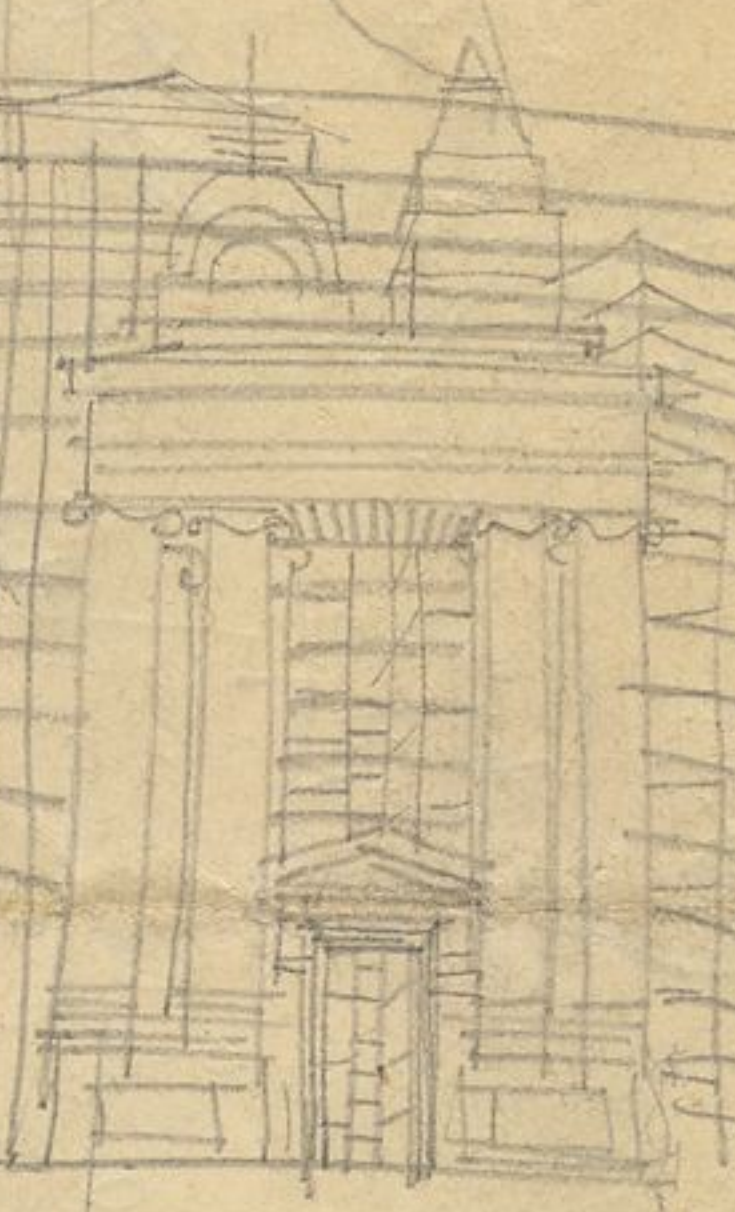


Treballs de Arquitectes  
 Regnant  
 Aldeguera  
 Voldt

Violetta la Dina  
 Diccionario de Arquitectura Francesa  
 Especificaciones para la Arquitectura

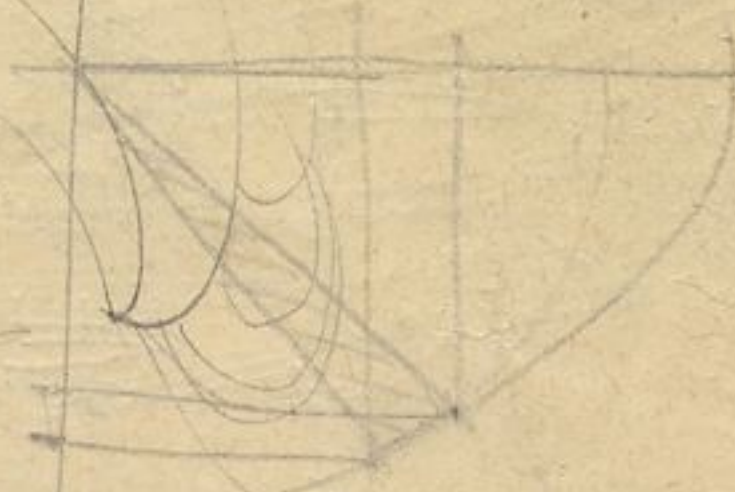
88,0	975
8460	9198
3600	
325	
59,0	



~~883~~  
~~885~~

$2x^2 + 3x + 2 = 0$   
 $2x^2 + 3x + 2 = 0$   
 $2x^2 + 3x + 2 = 0$   
 $2x^2 + 3x + 2 = 0$

$2x^2 + 3x + 2 = 0$



861	135
166	248
260	

883  
 885  
 9713

$A = 50^3$   
 $1250$   
 $1250$

$25-10$   
 $2008$   
 $2259$

$M = 600 \times 4 = 2000$

$H = 40$   
 $A = 1100$

$100q = \frac{M}{c}$   
 $q = \frac{2000}{10} = 200$

$q = 10$   
 $q = \frac{30000}{970}$

$q = 300$   
 $q = 244$

$A = 882$   
 $q = 13$   
 $A = 2155$

$1928$   
 $1250$   
 $1856$

$928$   
 $1136$

$1136$

$q = 3092$   
 $2c = 3092$

$q = 1340$

$q = 1100 = 600 - 600q$

$q = 114 + 64 = 6$

$q = \frac{6}{17} = 0.352$

$9760$   
 $9702$   
 $35280$

255



$15d - 4$

$600 - 600q$

$q = \frac{6}{17} = 0.352$

