

$$\begin{array}{r}
 29,5 \quad | \quad 5 \\
 \hline
 65 \quad | \quad 5,9 \\
 \hline
 \infty \quad | \quad 24,5 \quad | \quad 5 \\
 \hline
 \infty \quad | \quad 10 \quad | \quad 6,12 \\
 \hline
 \end{array}$$

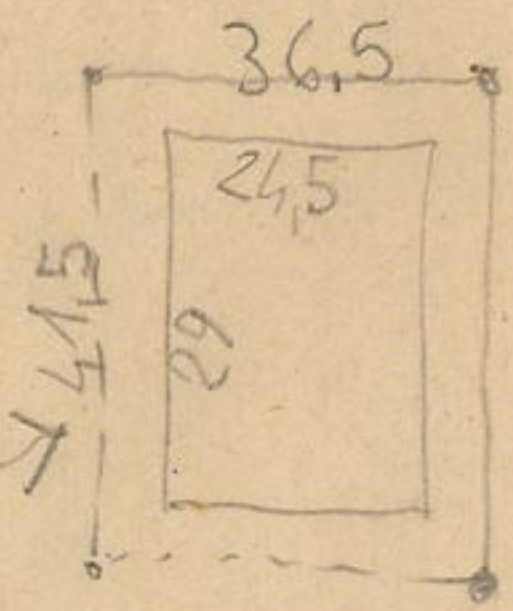
$$\begin{array}{r}
 173,5 \quad | \quad 178 \\
 \hline
 175 \quad | \quad 222 \\
 \hline
 190 \\
 \hline
 34 \\
 \hline
 \end{array}$$

$$\begin{array}{r}
 78 \quad | \quad 9 \\
 \hline
 60 \quad | \quad 8,66 \\
 \hline
 60 \quad | \quad 6 \\
 \hline
 76,7 \\
 \hline
 \end{array}$$

$$\begin{array}{r}
 173,5 \quad | \quad 166,5 \\
 \hline
 173,5 \\
 \hline
 6,7 \\
 \hline
 6,7 \\
 \hline
 186,9 \\
 \hline
 \end{array}$$

$$\begin{array}{r}
 24,5 \quad | \quad 4 \\
 \hline
 5 \quad | \quad 6,125 \\
 \hline
 10 \\
 \hline
 \end{array}$$

1/2	3,05	4,33	1/2
1	6,10	8,66	1
1 1/2	9,15	12,99	1 1/2
2	12,20	17,32	2
2 1/2	15,25	21,65	2 1/2
3	18,30	25,98	3
3 1/2	21,35	30,31	3 1/2
4	24,40	34,64	4
4 1/2	27,45	38,97	4 1/2
5	30,50	43,30	5
5 1/2	33,55	47,63	5 1/2
6	36,60	51,96	6
6 1/2	39,65		
7	42,70		
7 1/2	45,75		
8	48,80		



$$\begin{array}{r}
 17 \\
 \hline
 6,7 \\
 \hline
 10,3 \\
 \hline
 \end{array}$$

$$\begin{array}{r}
 29 \\
 \hline
 17 \\
 \hline
 41 \\
 \hline
 91,4 \\
 \hline
 17 \\
 \hline
 108,4 \\
 \hline
 \end{array}$$

$$\begin{array}{r}
 166,5 \\
 \hline
 205 \\
 \hline
 590 \\
 \hline
 \infty \\
 \hline
 \end{array}$$

$$\begin{array}{r}
 27 \\
 \hline
 6,16 \\
 \hline
 166,5 \\
 \hline
 45 \\
 \hline
 180 \\
 \hline
 18 \\
 \hline
 14,9 \\
 \hline
 \end{array}$$

$$73 = 12 \times 6, \dots \\
 28 \times 6,$$

$$\begin{array}{r}
 166,5 \quad | \quad 73 \\
 \hline
 205 \quad | \quad 2,28 \\
 \hline
 590 \\
 \hline
 \infty \\
 \hline
 \end{array}$$

$$\begin{array}{r}
 12 \\
 \hline
 608 \\
 \hline
 \end{array}$$



5

MOYA 28-31

H-1283/4

