

P04
—



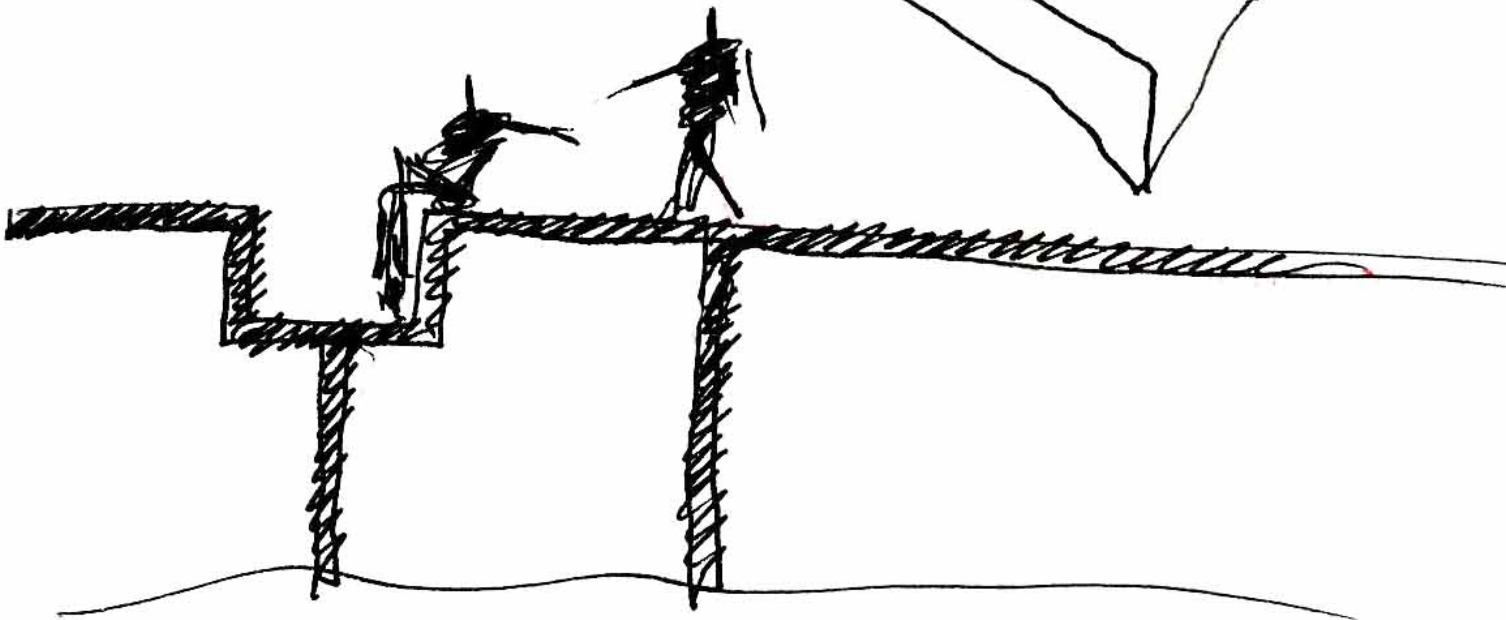
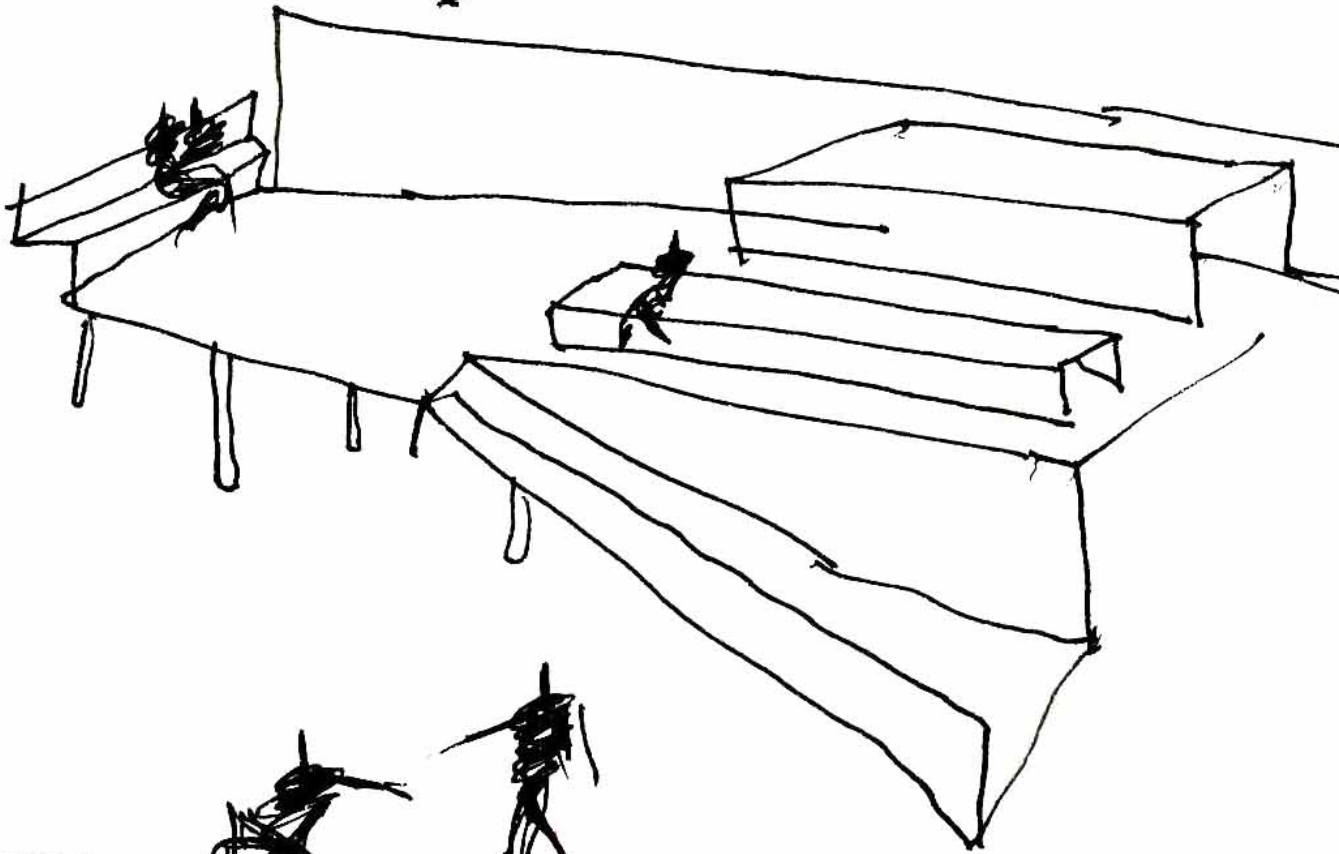
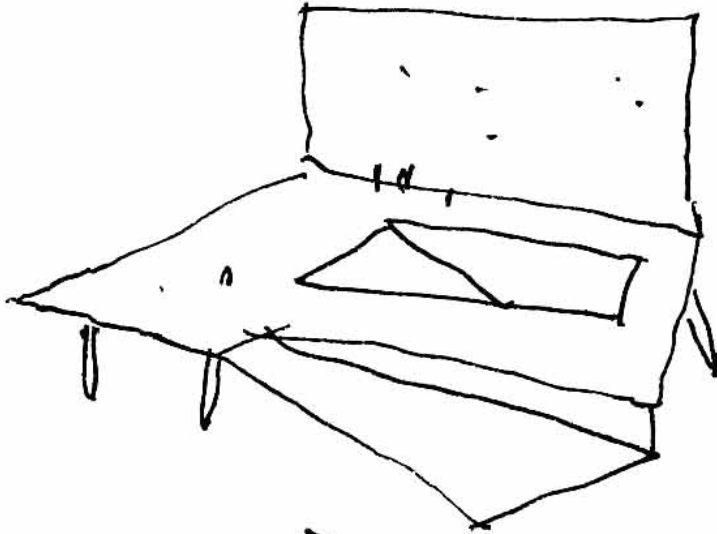
mairea

E.T.S. Arquitectura



ENTRE CATEDRAL Aug 6 2002.

7



ENTRE CATEDRALES Af. 6 2002.

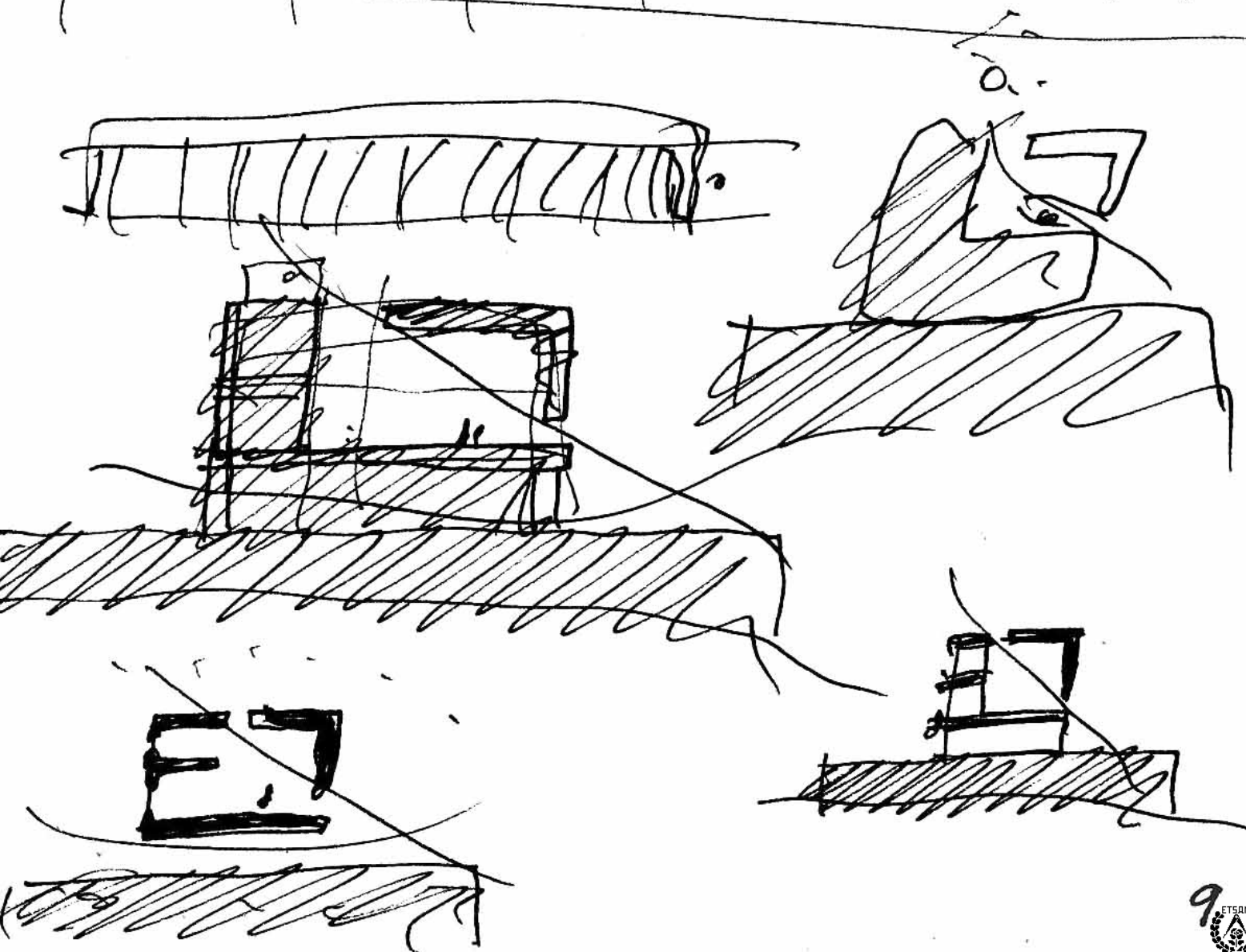
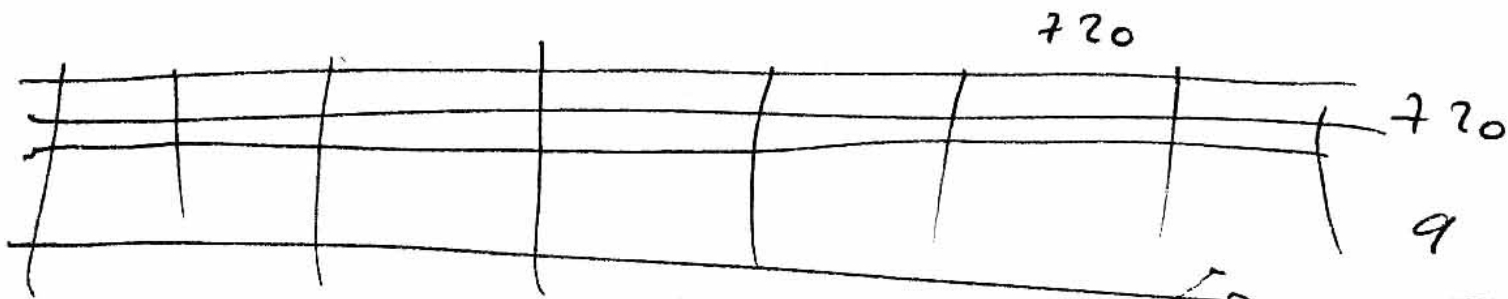
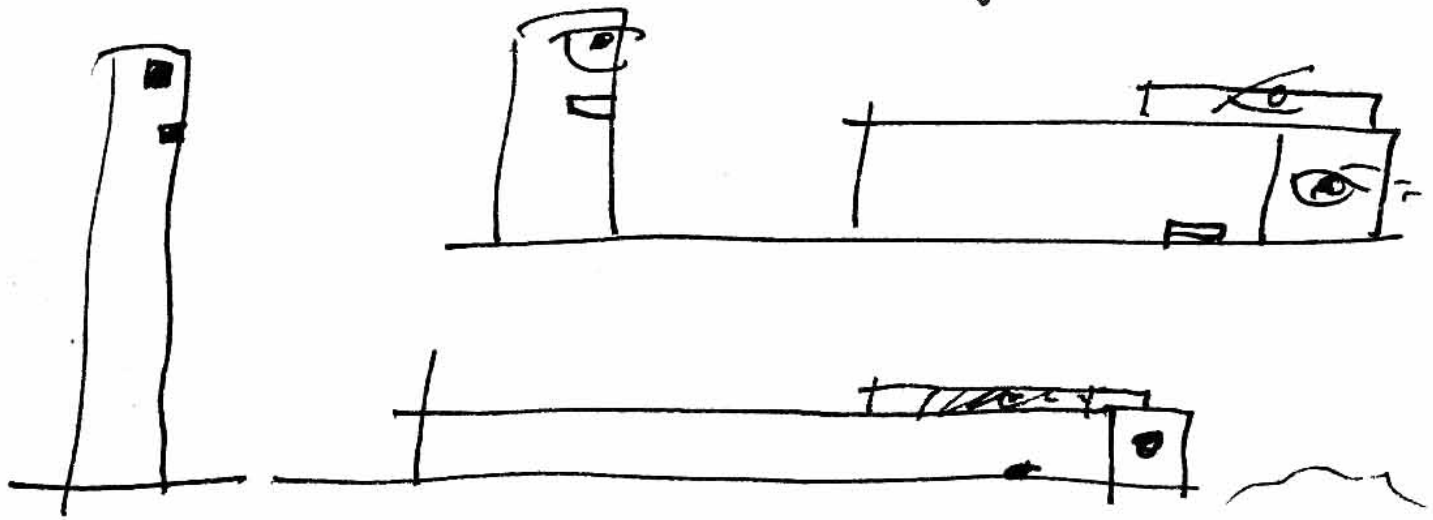
12

- > plano levantado - ELEVADO
- > palio de sombra - SOMBRA
- > plano metálico plegado. PLI
- > tapar lo de atrás TELÓN.
- > estructura ligera de APOYO.
- bordes plegados y con fosos.
para reforzar la estructura
para LIBERAR los bordes.
no barandillas.
- el metal debería ser o
nudo (inox) o blanco blanquísimo.
como de papel INMACULADO
- tener claro que es EFÍMERO.



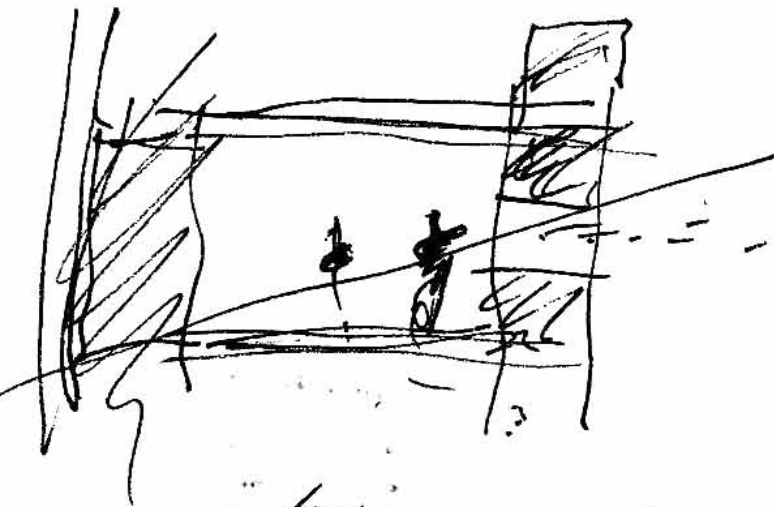
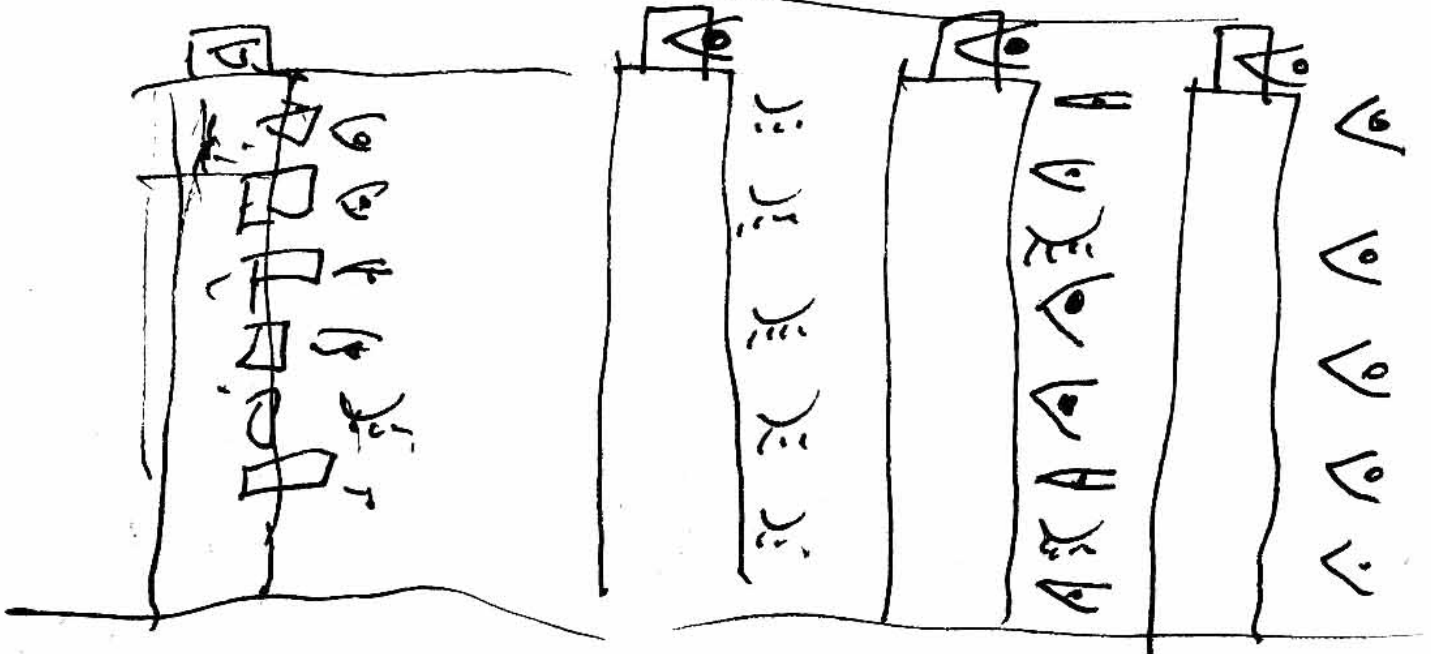
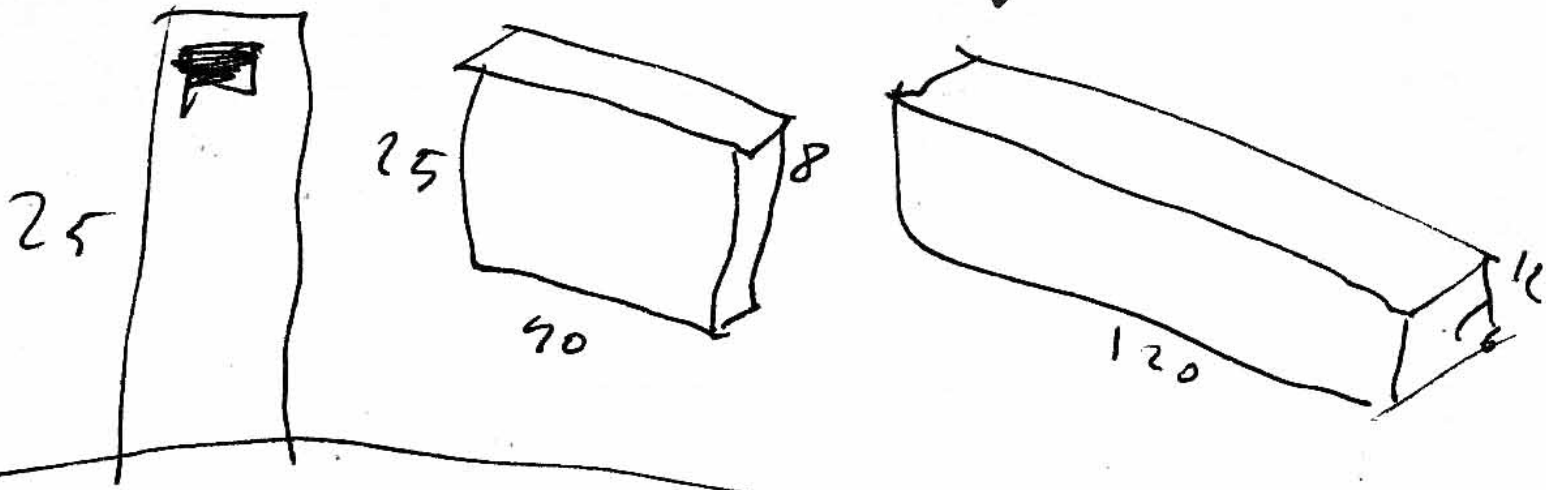
SM

August 7 2002



ARMERIA

Aug 7 2002



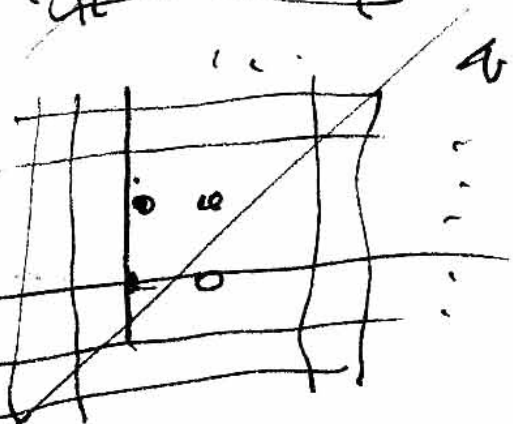
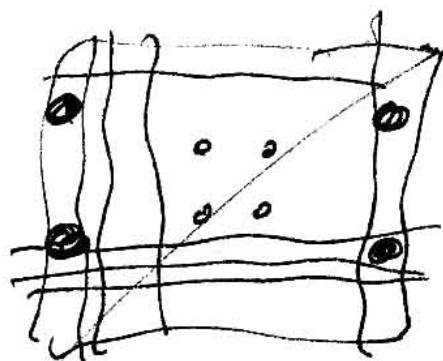
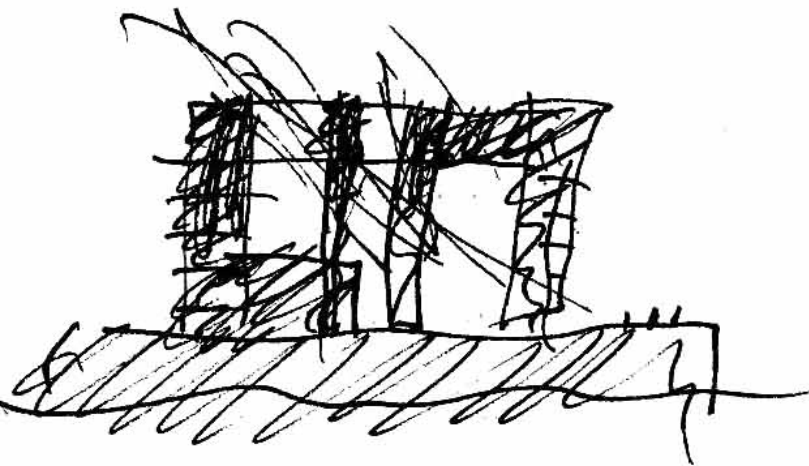
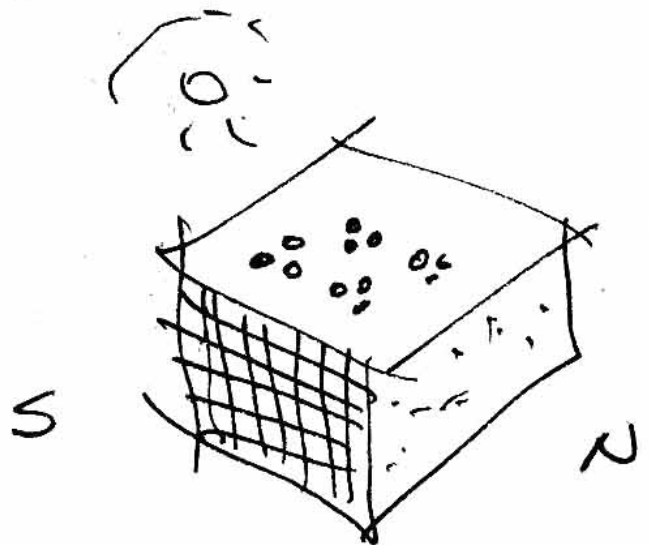
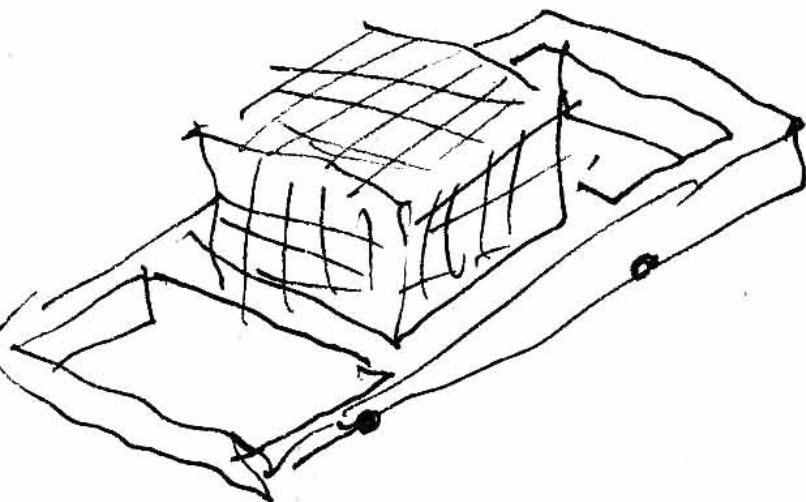
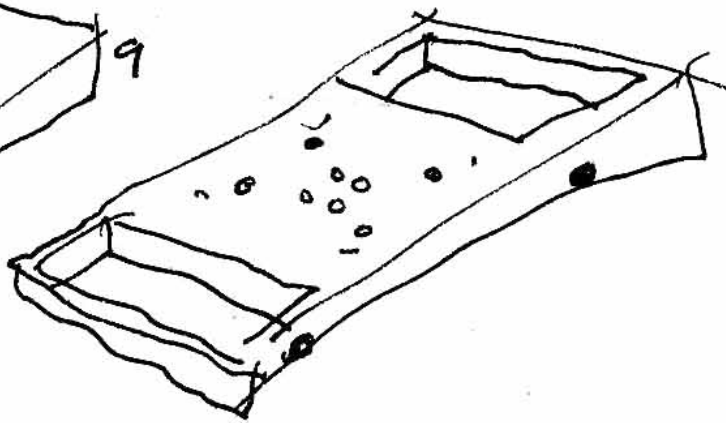
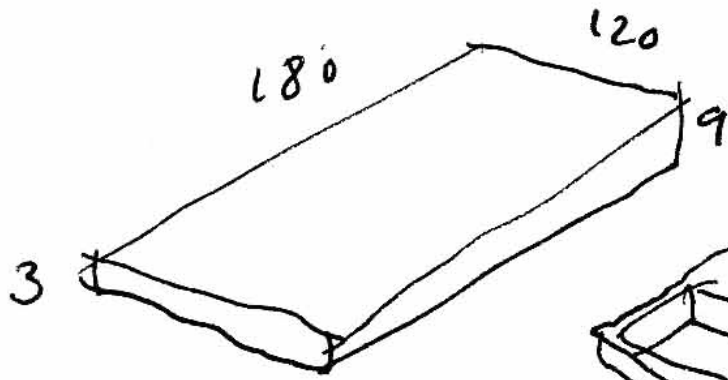
> buscan code con bonobos
de variedad que se

(el de
A. de Frankfurt. abren. 7 en 1999)

10

GRANADA

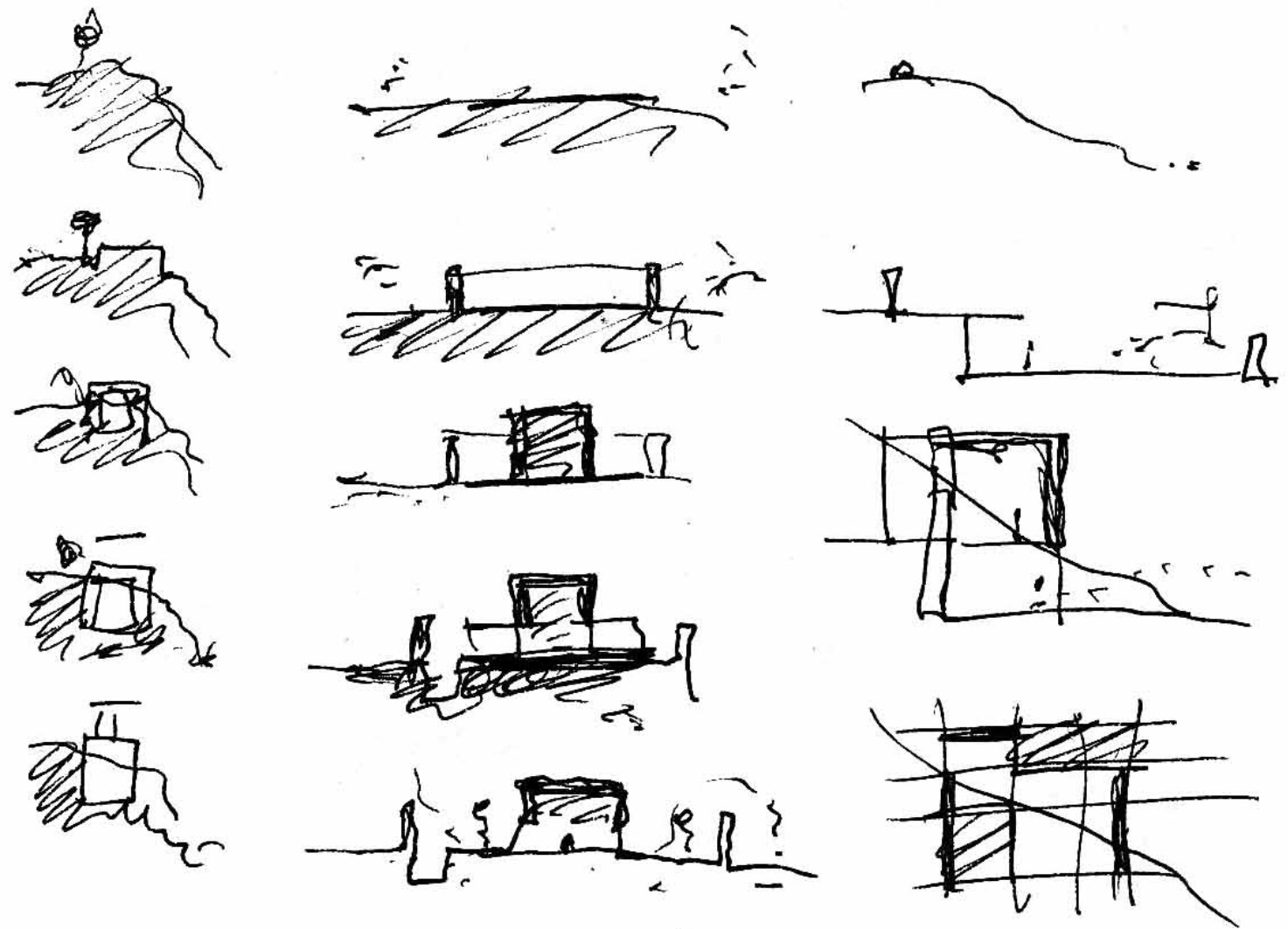
Aug 7 2002



DIAGONALITY (Plan section)
DIAGONALIDAD. S

3 CASA
3 HOUSE

Aug. 7 2002



1 to establish a plan. HORIZ. PLAN.
platform

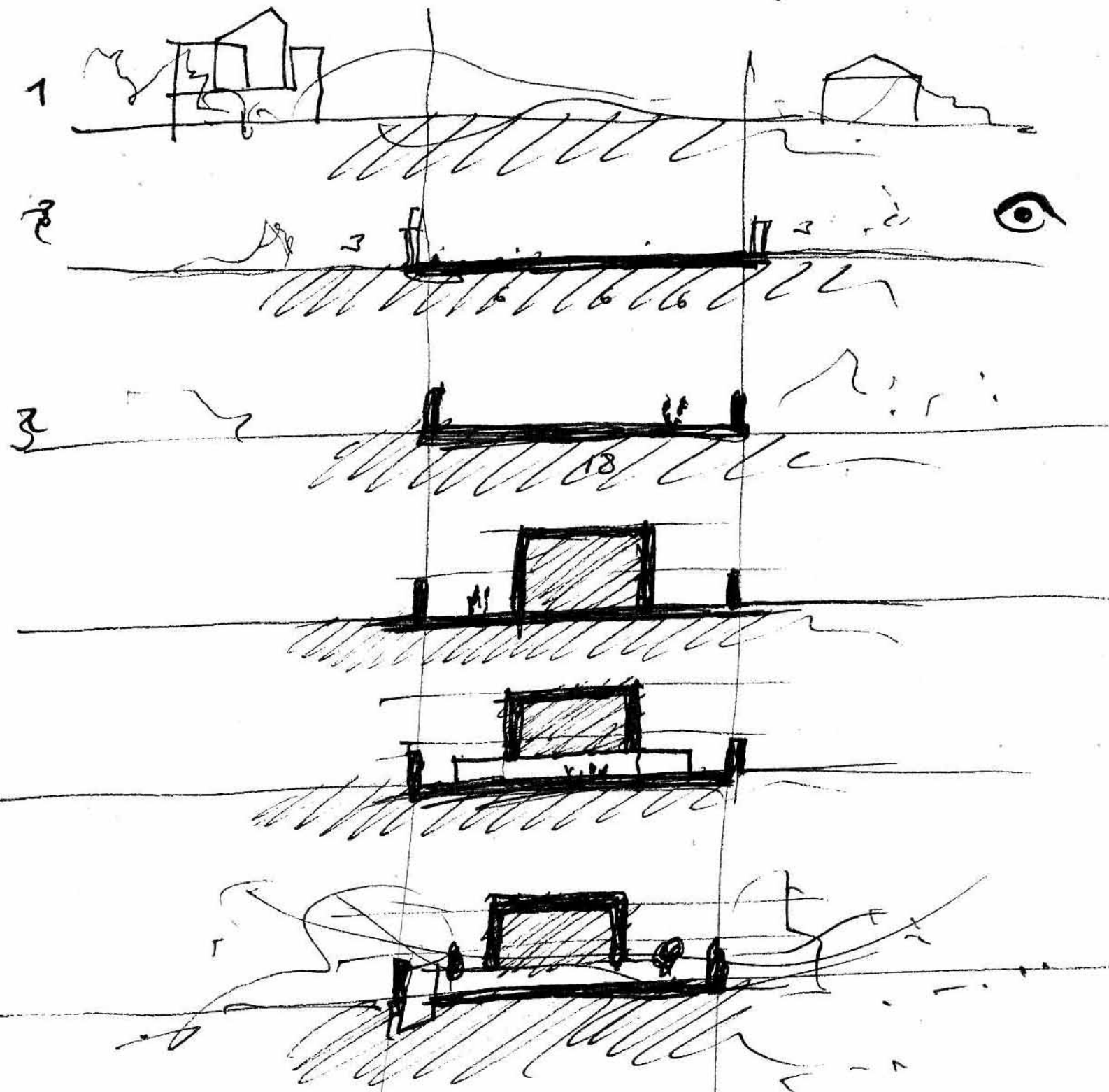
Japan house 1 situation.
Tur + Deb. 2 situations.

PB

G

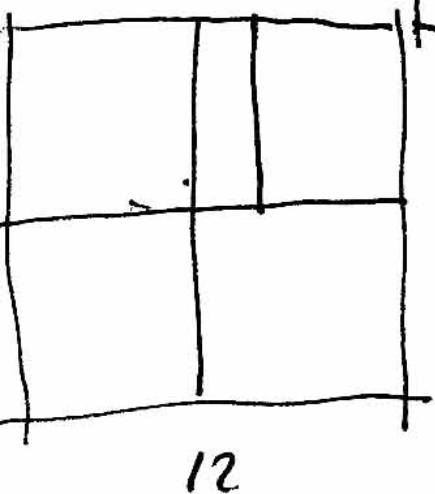
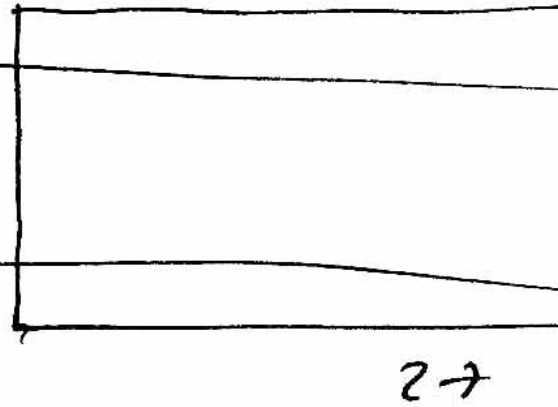
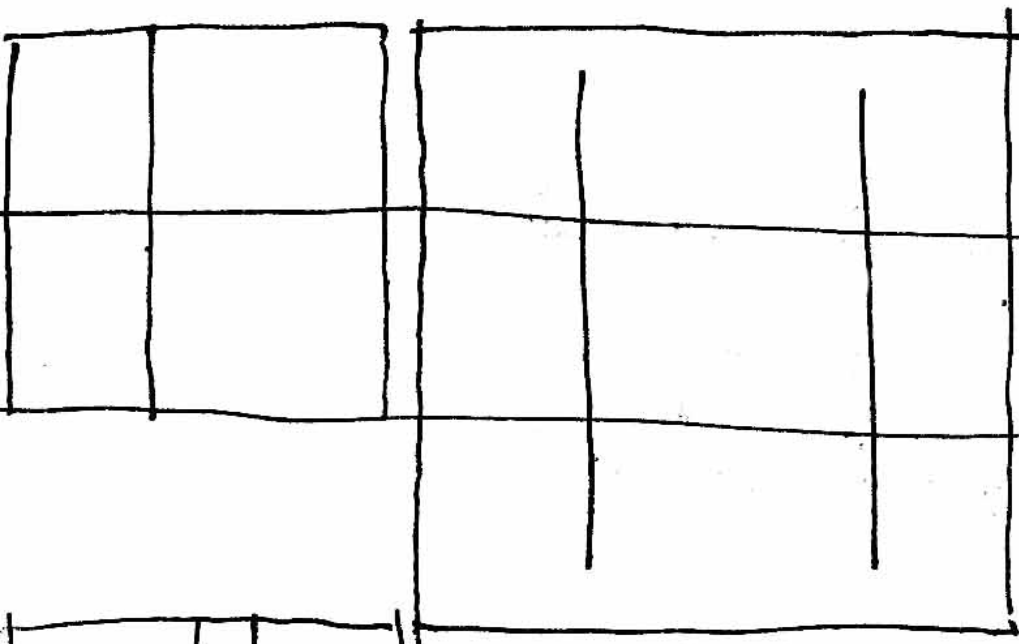
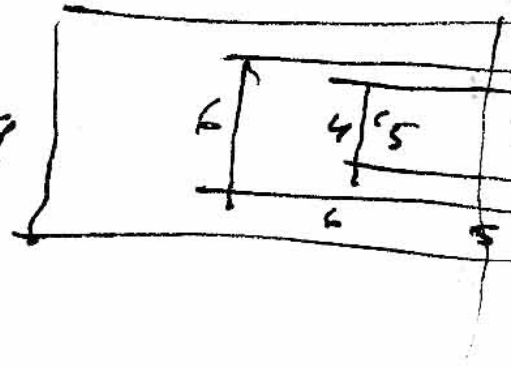
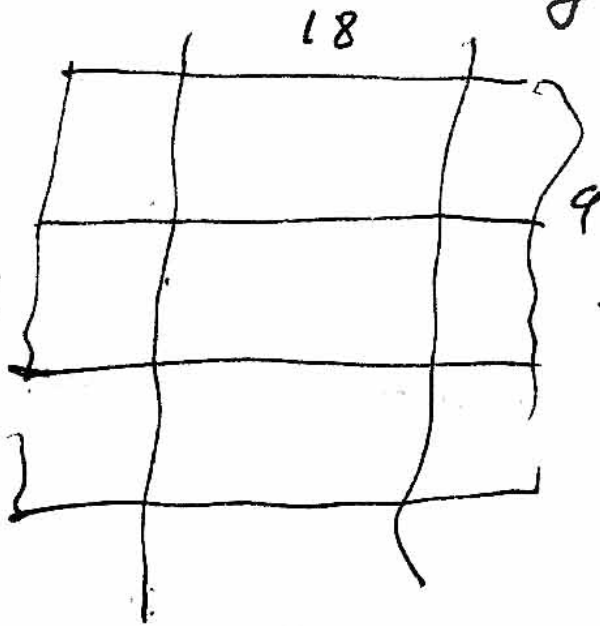
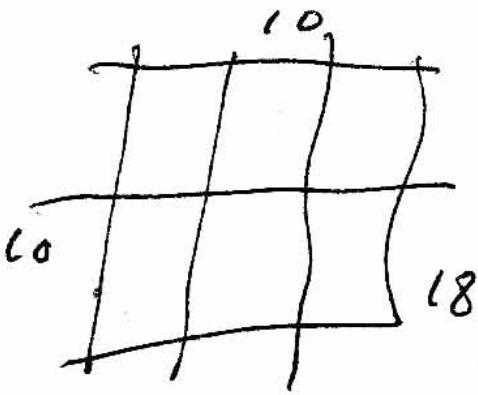
TUR

GASPAR house 1 Aug. 7 2002

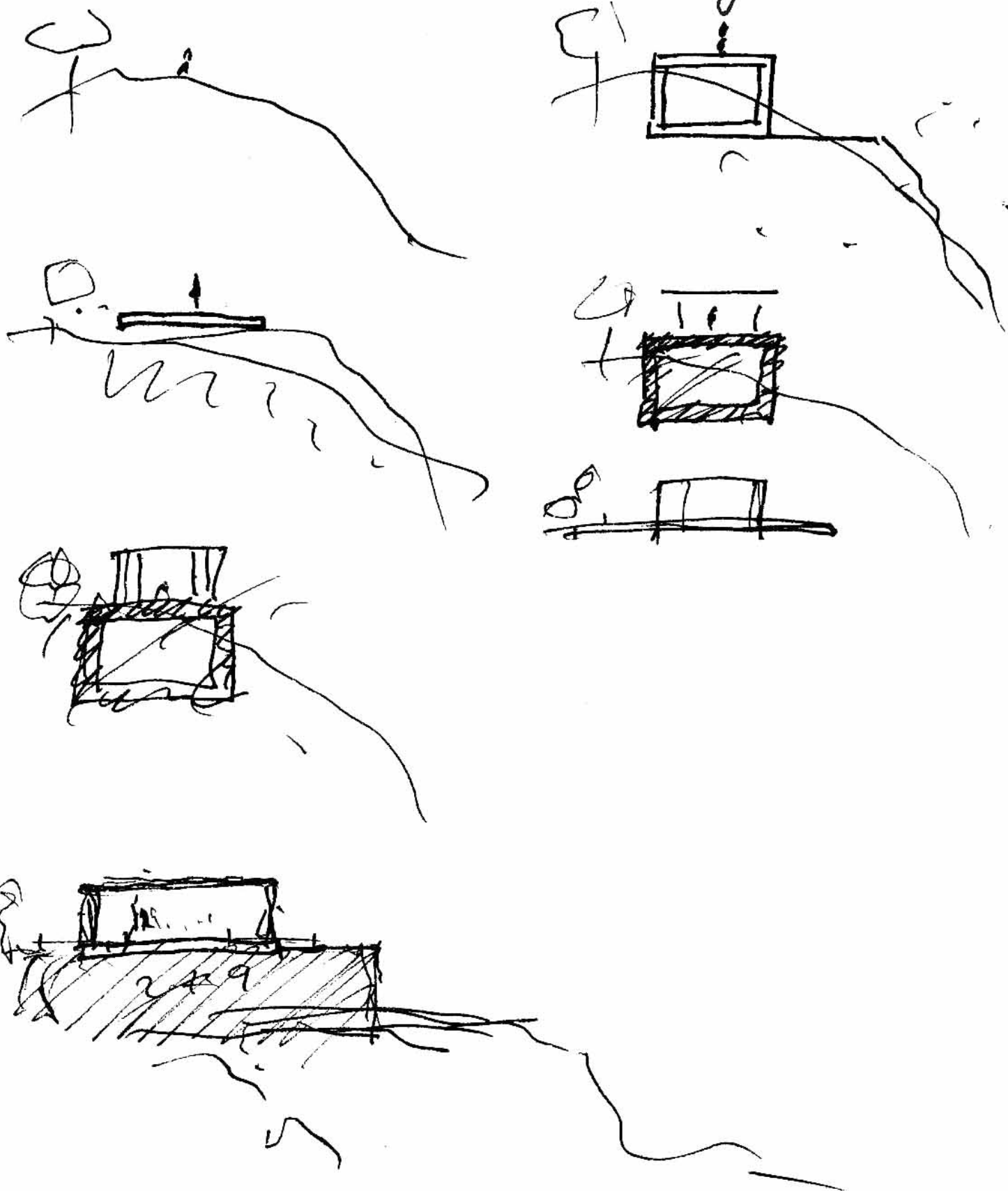


3 HOUSE

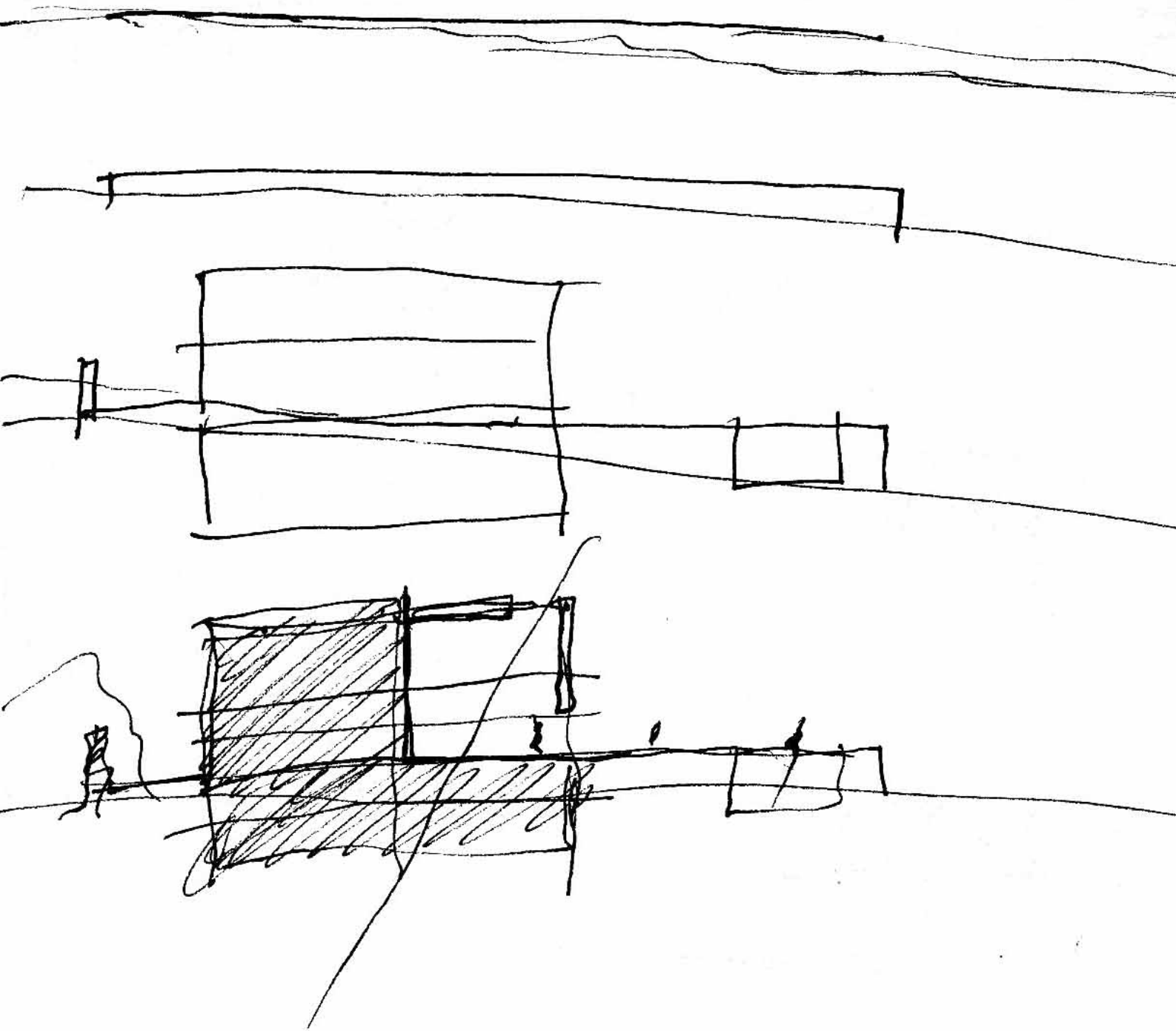
Aug 7 2002



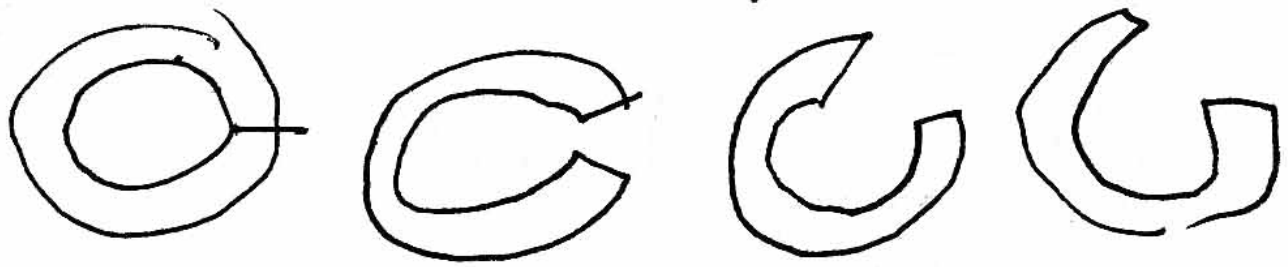
DEBLAS HOUSE August 2002



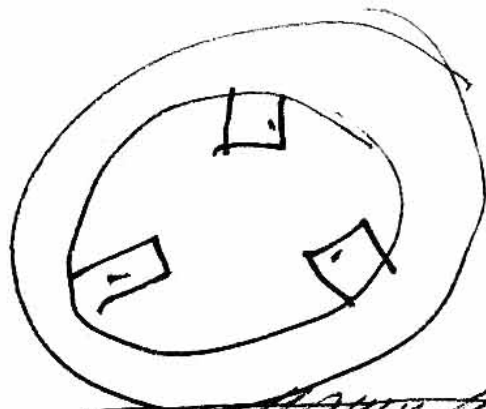
ASENCIO HOUSE Aug. 7 2002



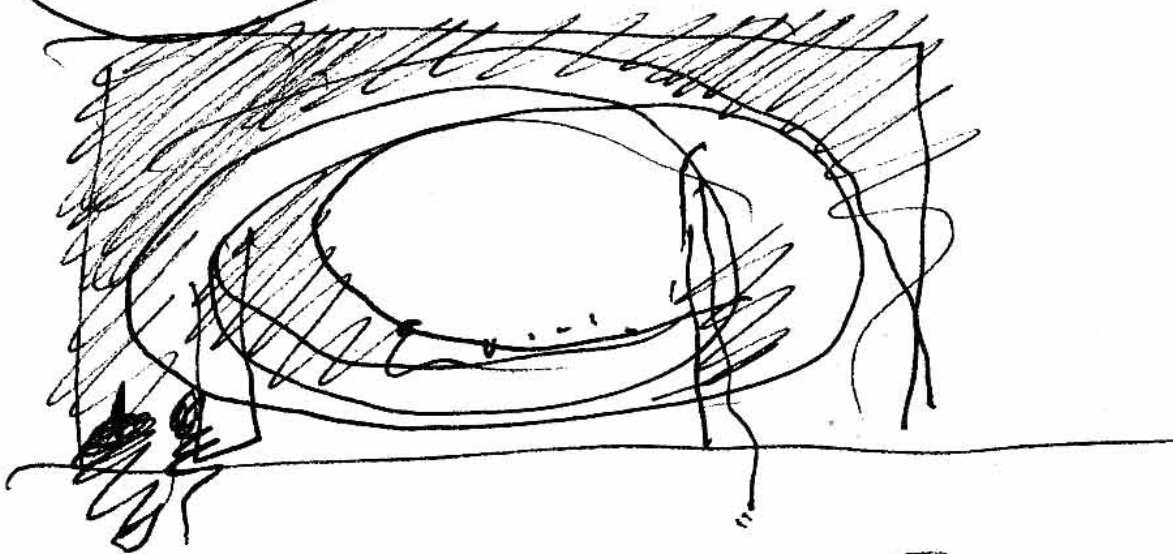
MB August 7 - 2002



four tres coronas circulares
+ 2 segmentos de
corona circular

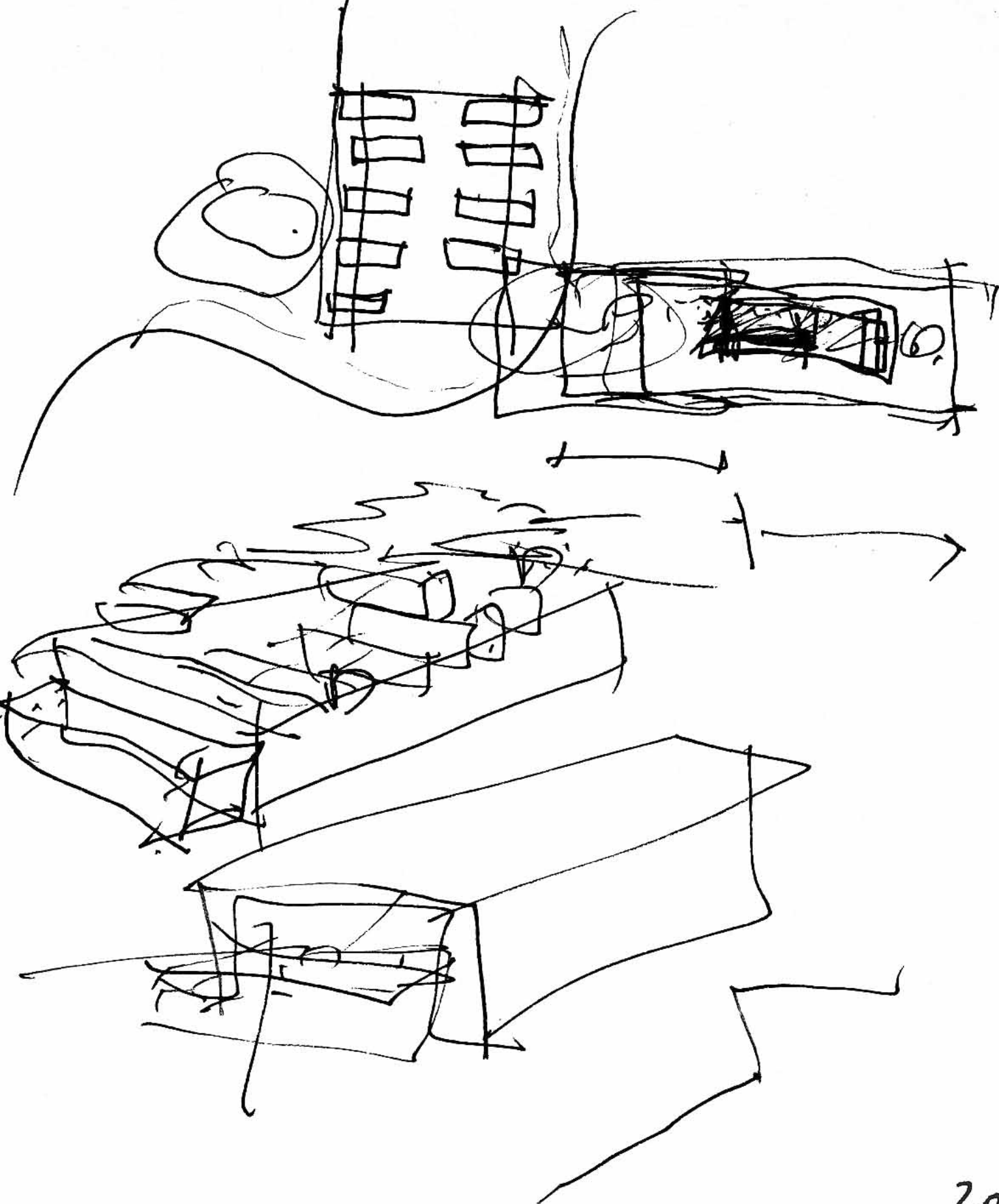


+ 3 midoverhangs

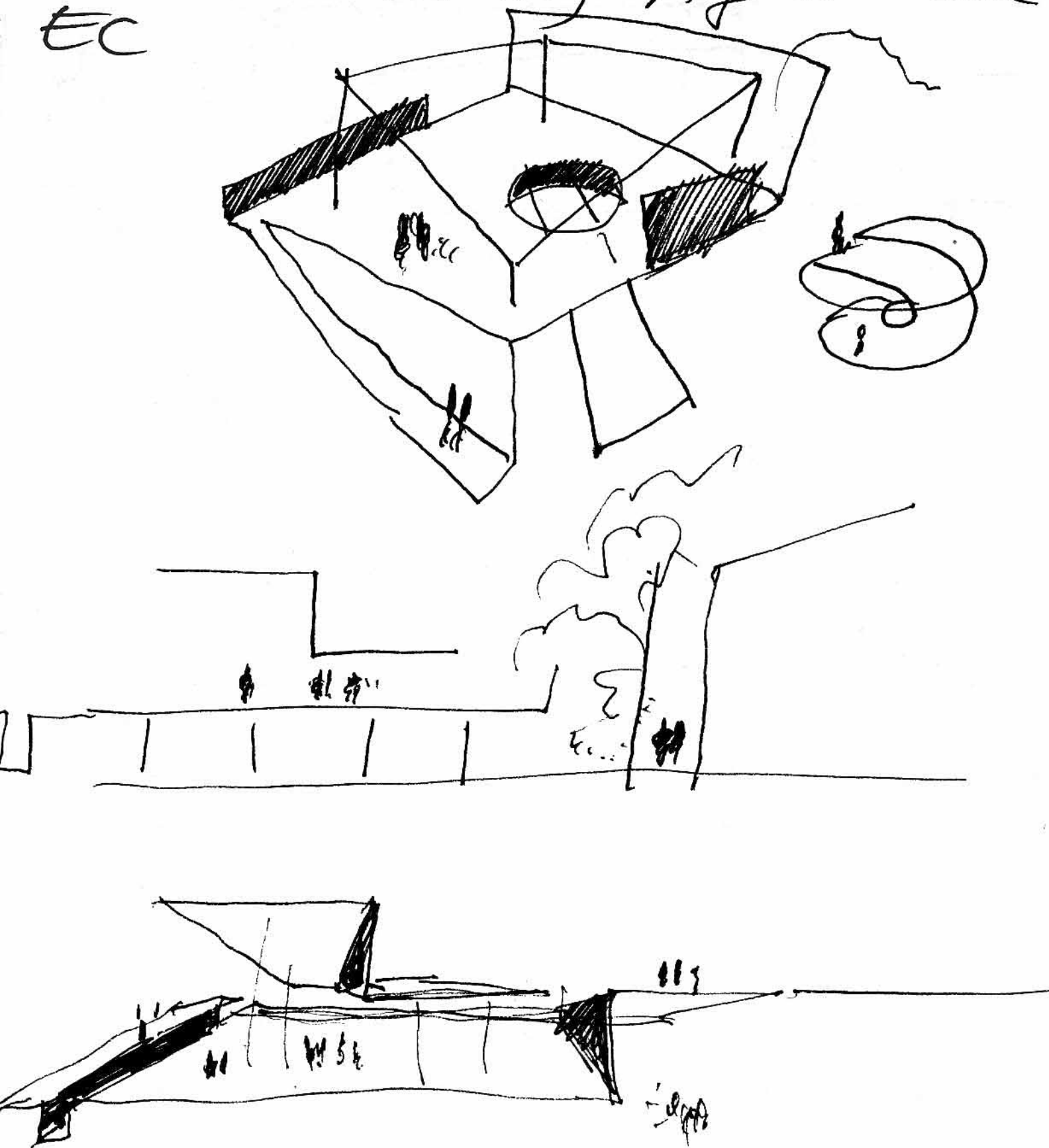


Ver exactamente by medio

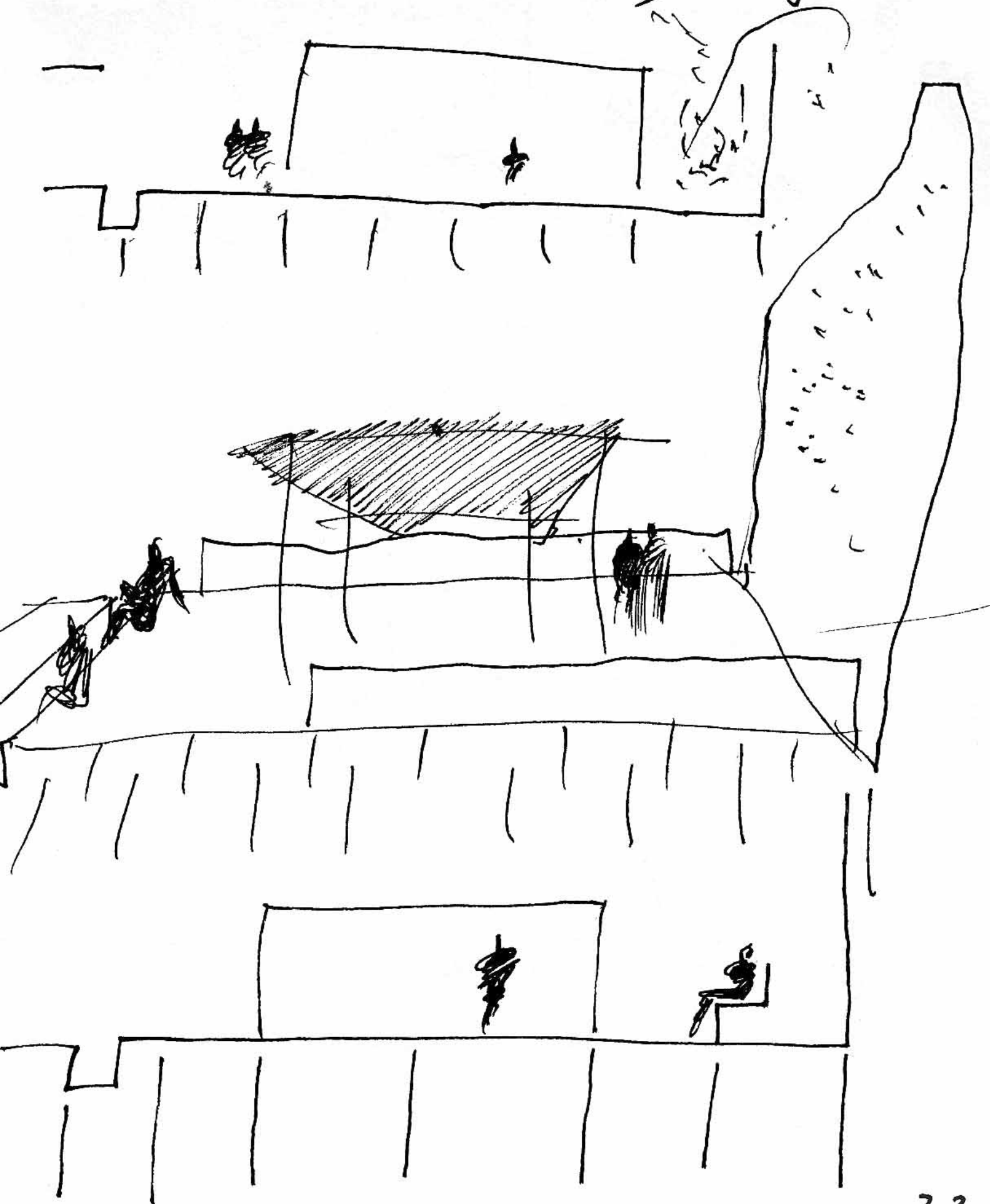
PFC Juan Luis R. Aug. 8. 2002



ENTRE CATEDRAL Aug 8 - 2002
EC

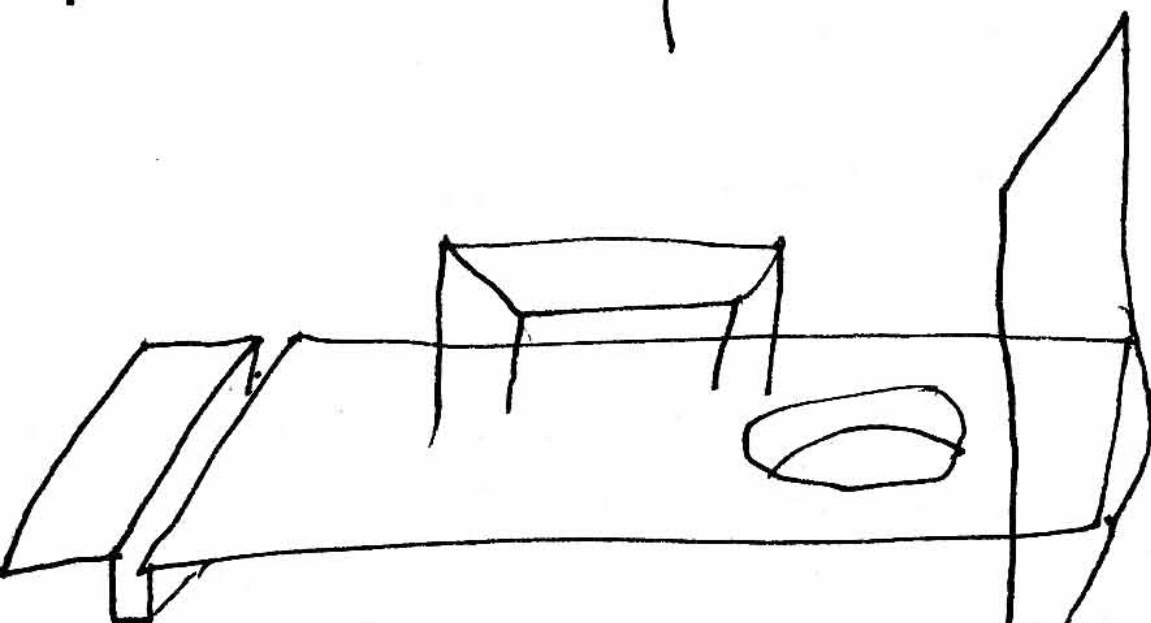
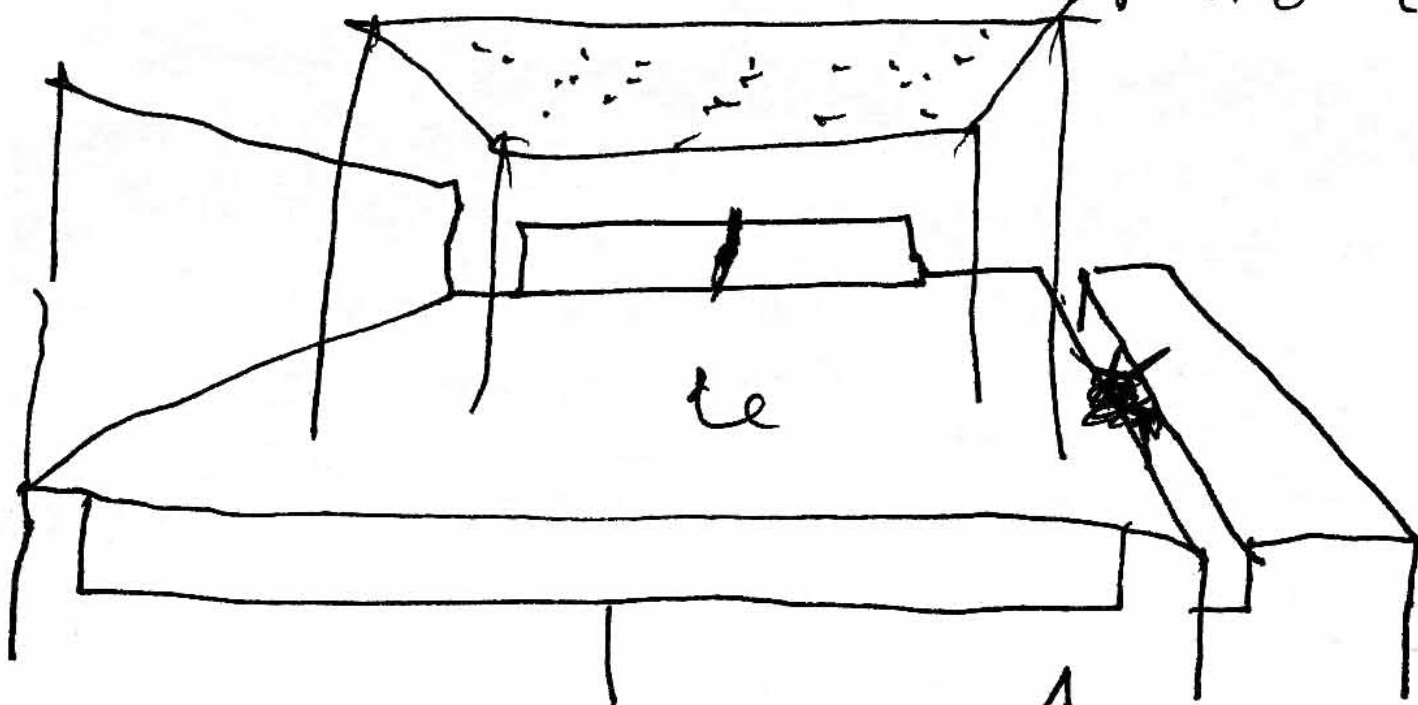


EC ENTRE CATEDRALES Aug 8 2002

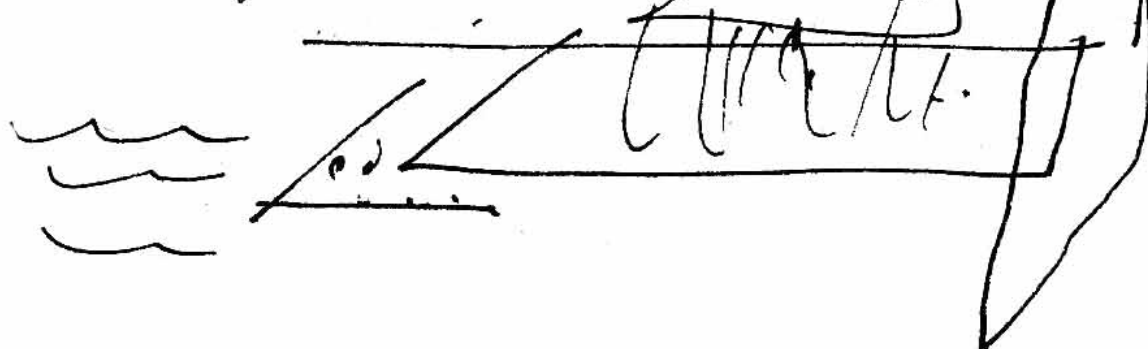


EC..EC.

August 8 2002

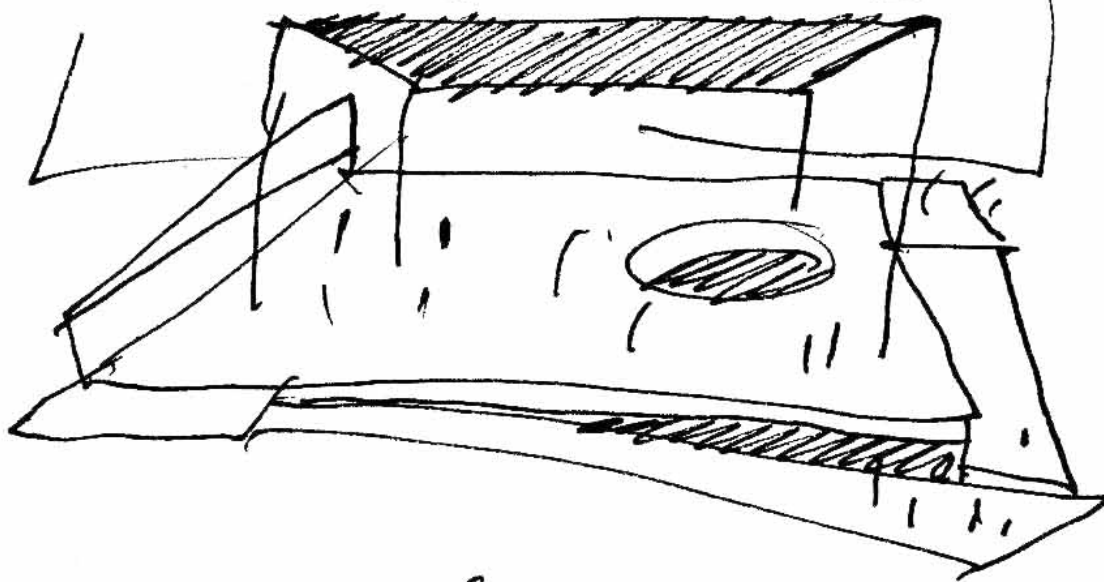


capacidad de explicarlo
con un papel plegado
& (pabillos a filetes)



ENTRE CATEDRALES

Ay 9 2002



tone.

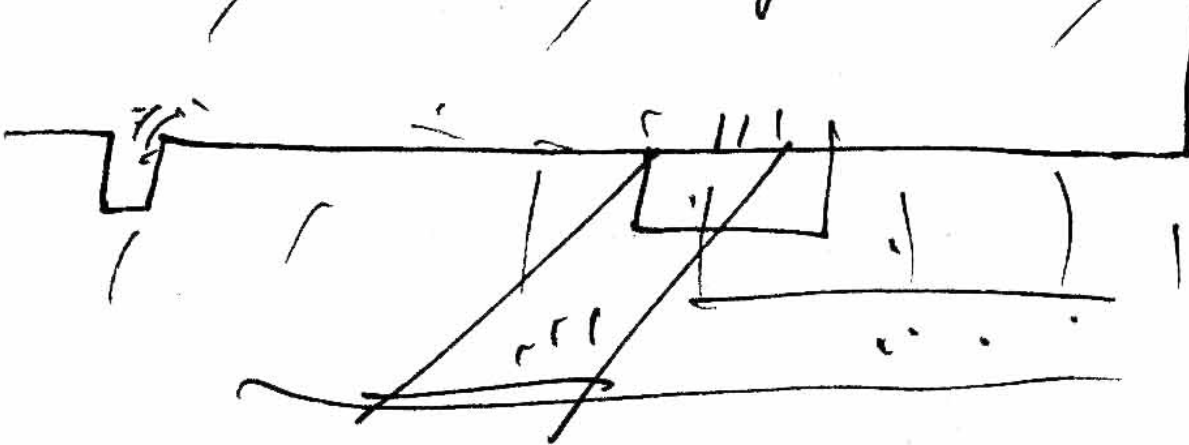
- un plano plegado
 - con patas
 - con PAISO. (ANDAS)
- VARALES

con sombra

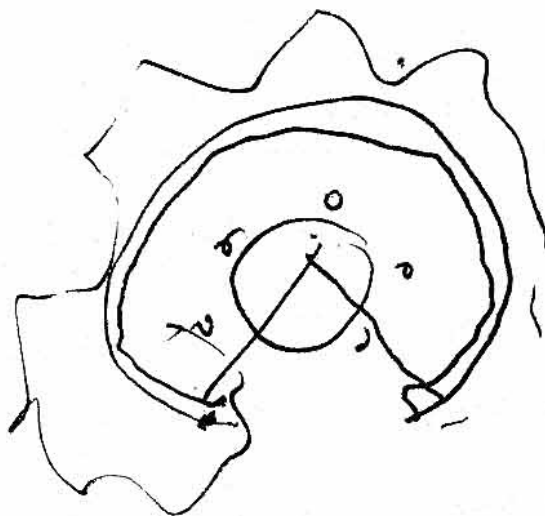
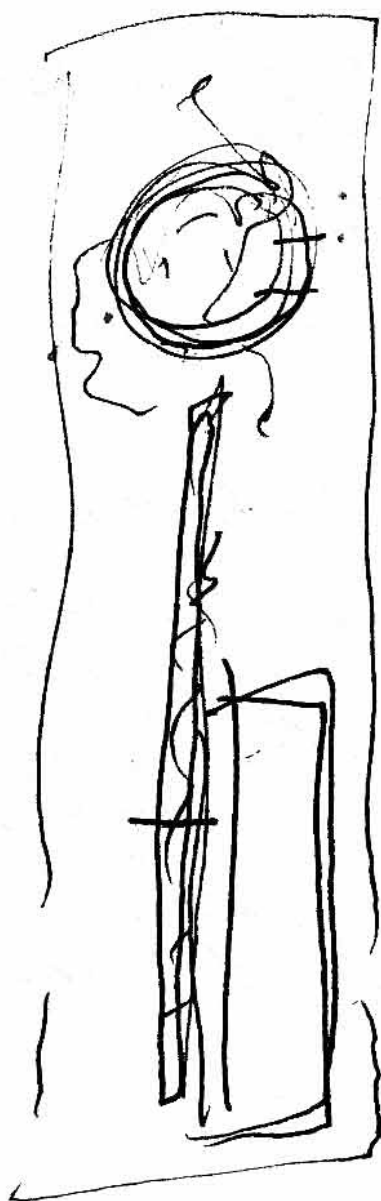
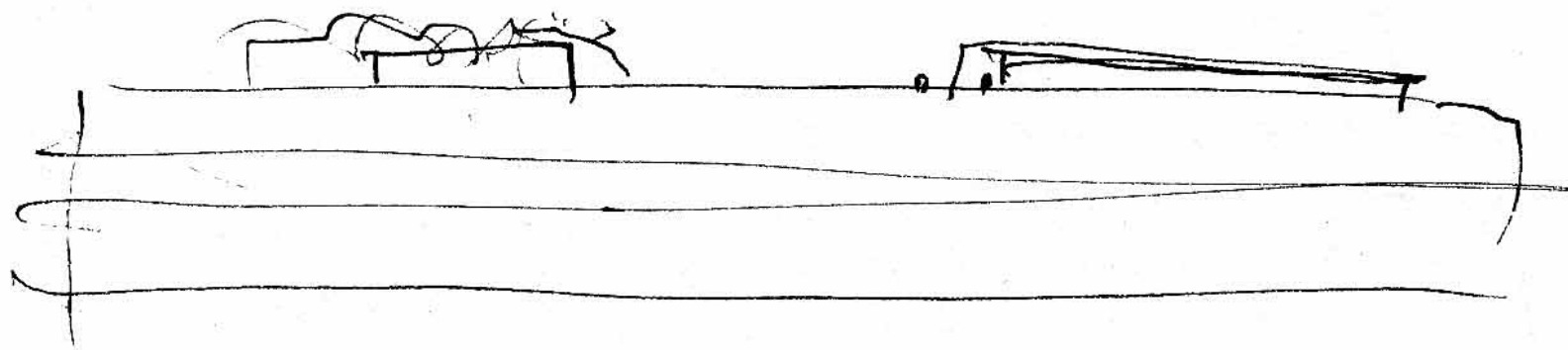
+ telón
gadesmóvil

un plano elevado con sombra?

un plano plegado - rosado



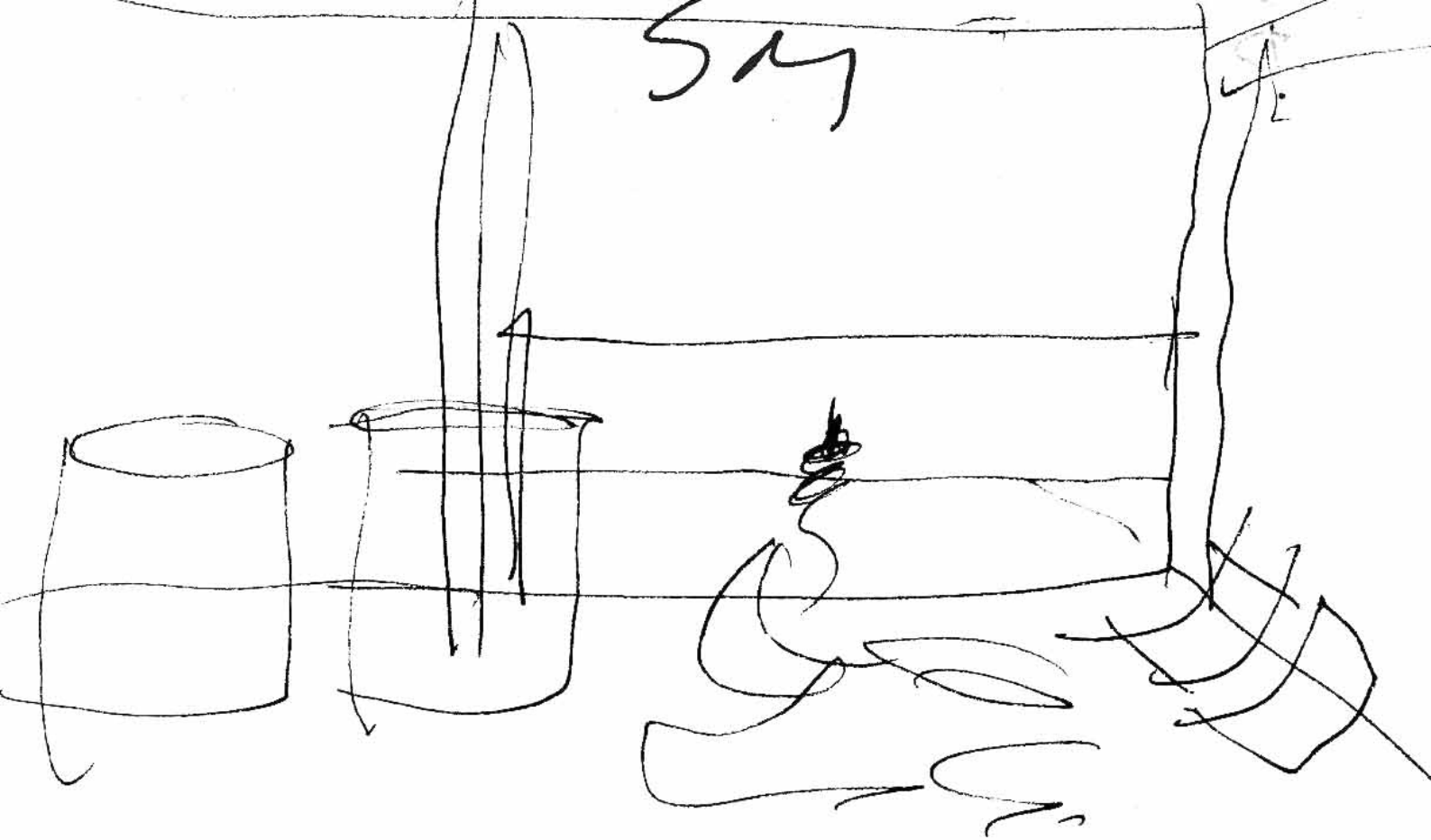
5m



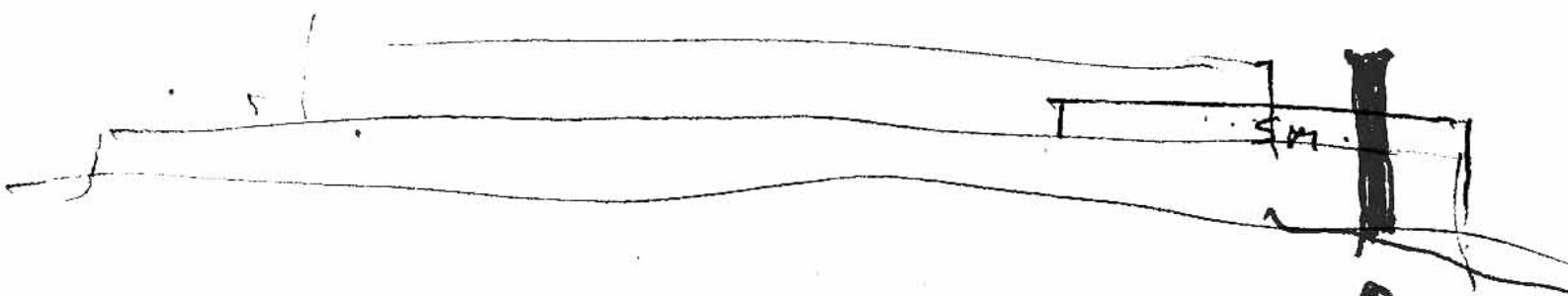
28

Aug. 24. 2002





SM

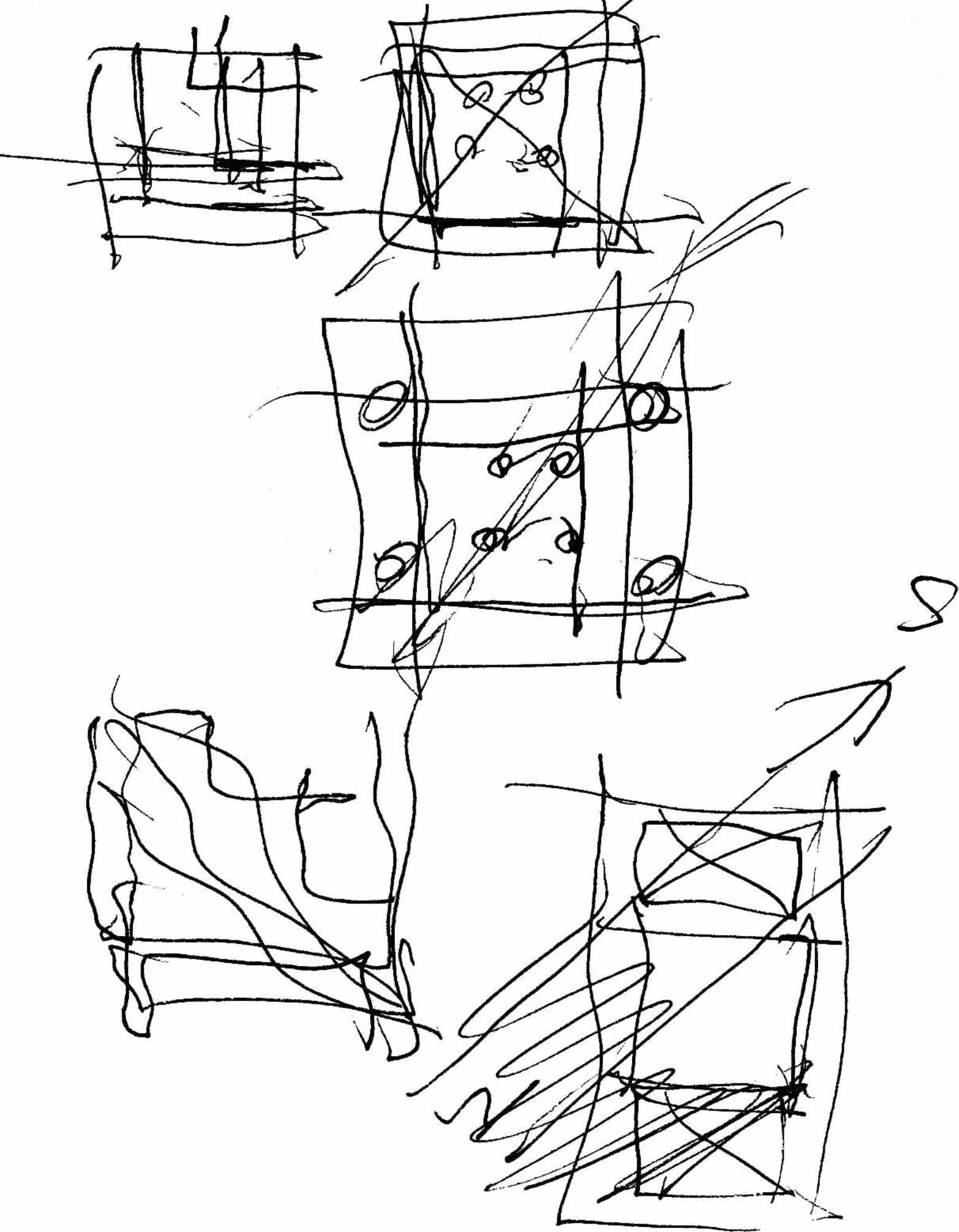


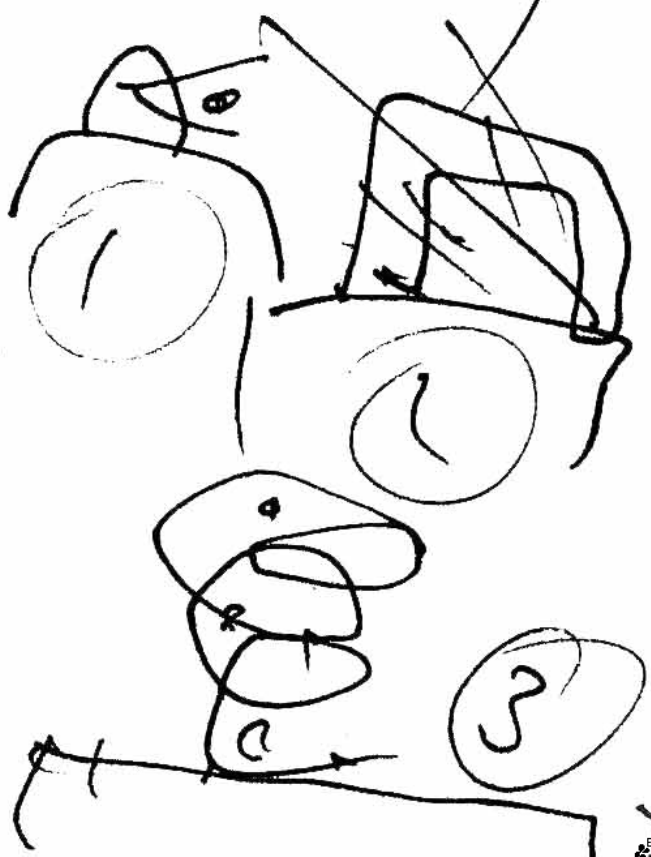
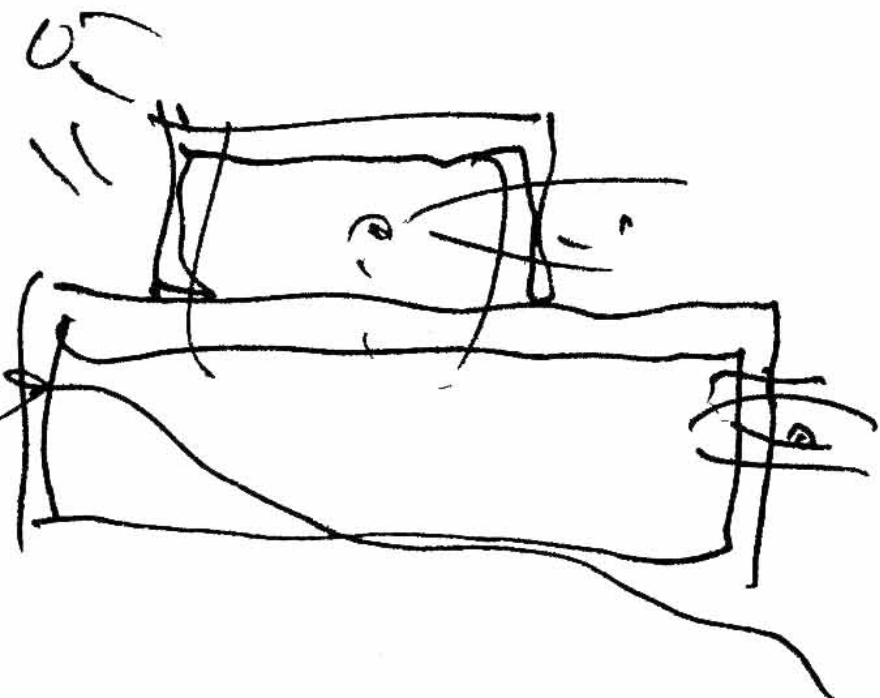
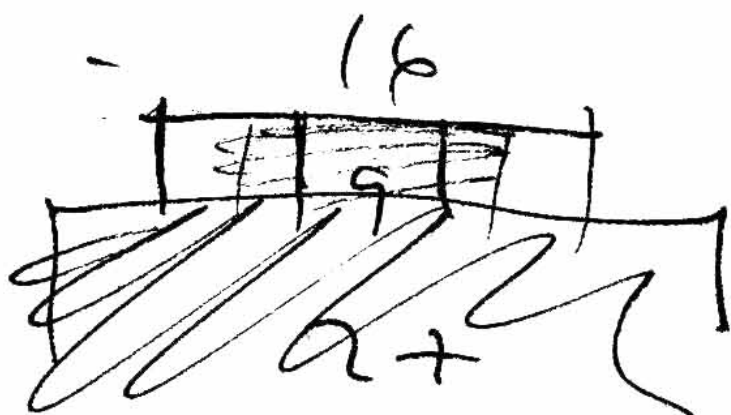
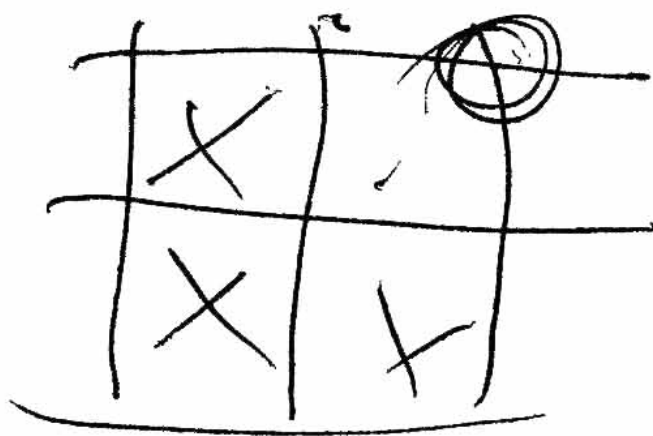
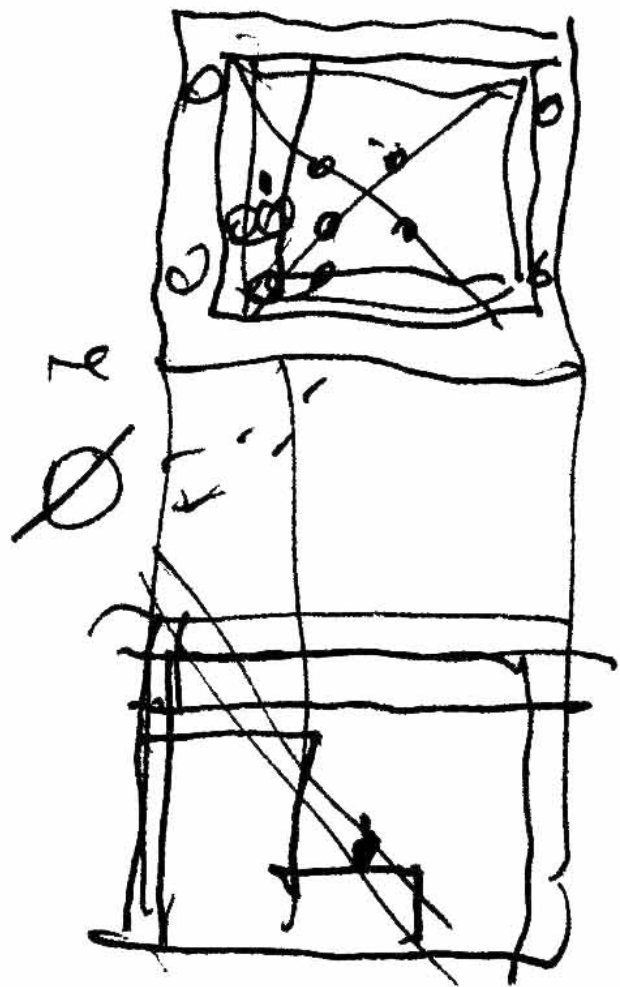
SM

2007 + 2009

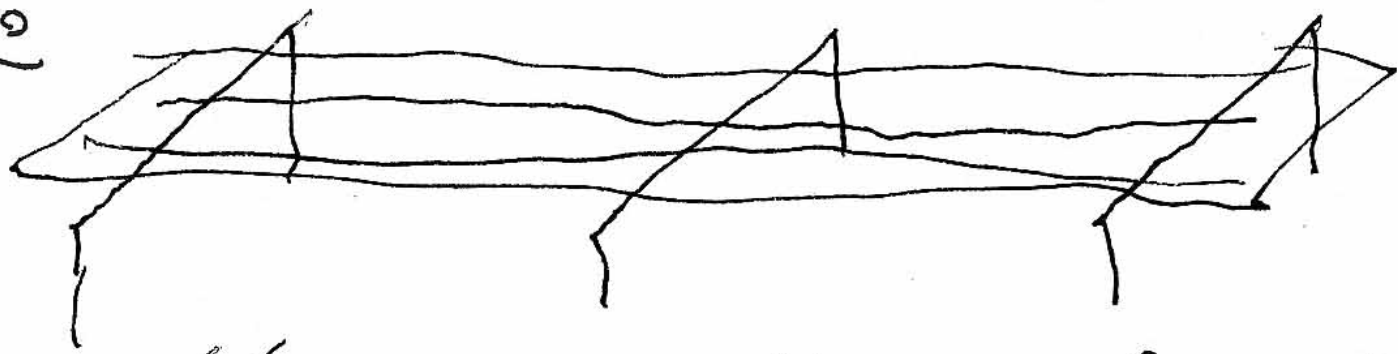
Aug. 24. 1001 29



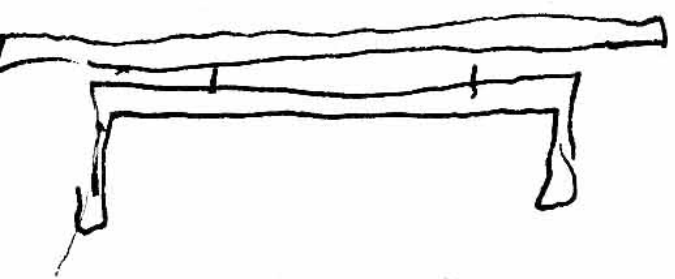




101

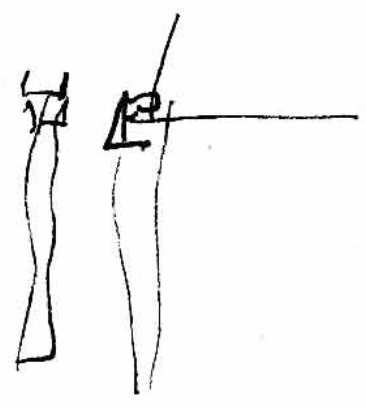
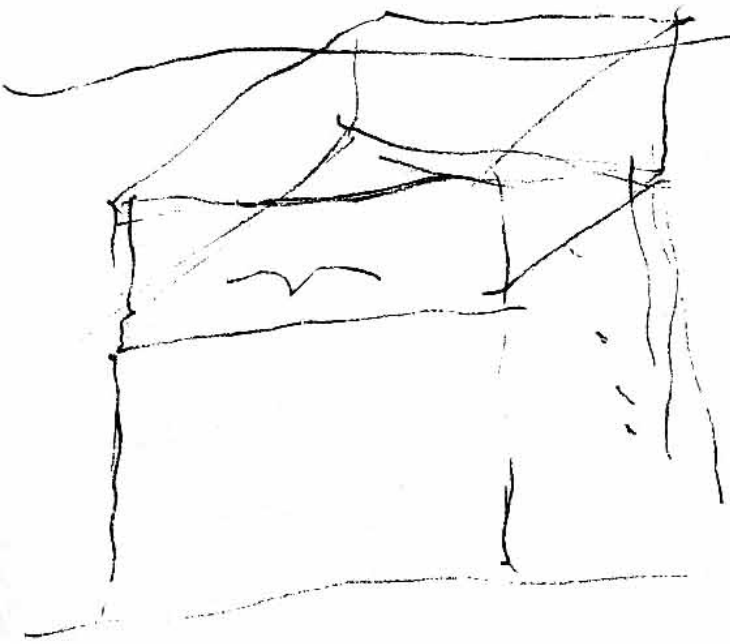


(busca el dibujo de frameda)
↳ y el precio (torcuato) por
gluein.



→ Palmein.

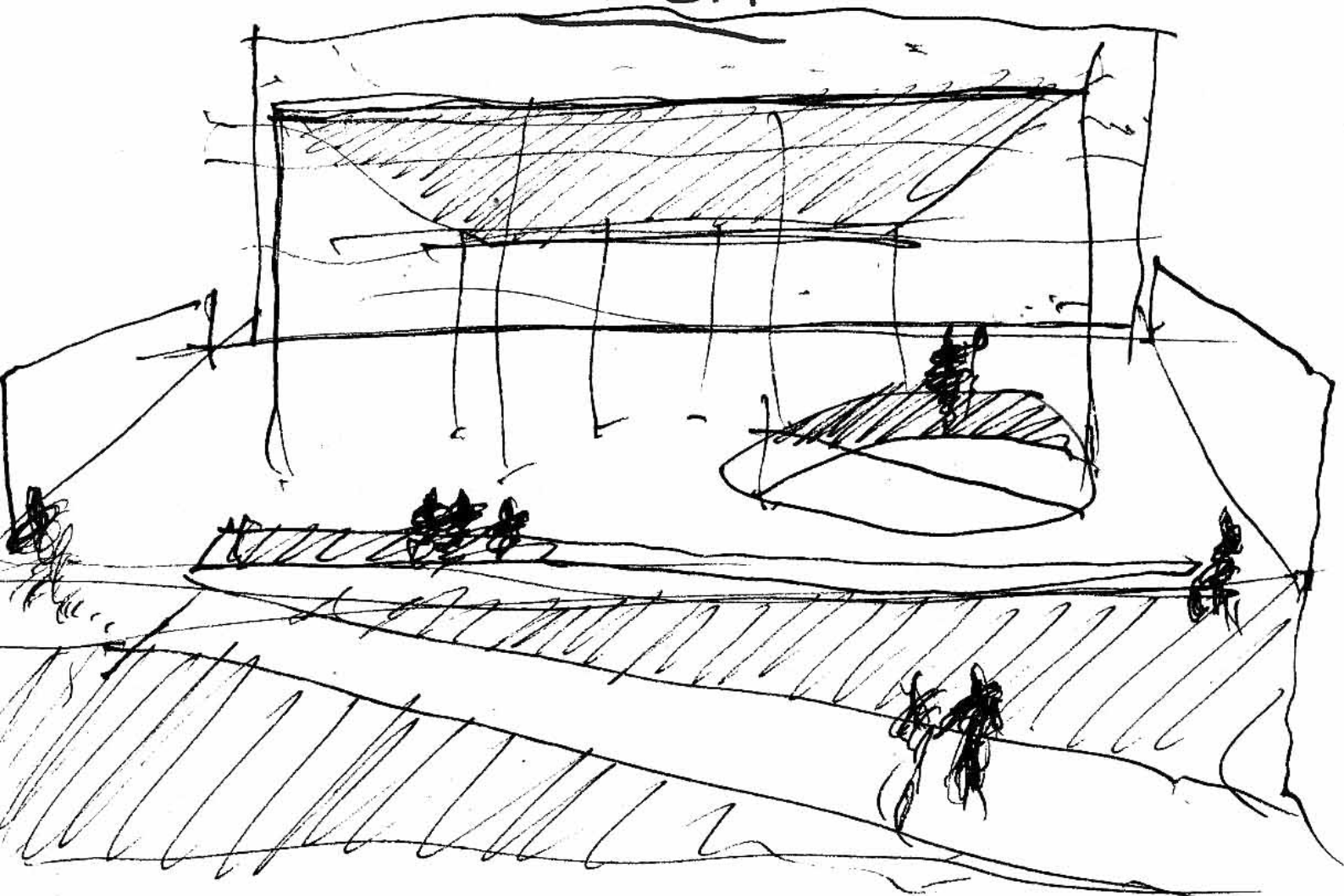
← SM.



în
ENTRE CATEDRALE
CON BRŪJULĂ

august 7 . 2002.

→ KUNSTWOLLEN
"voluntad de..."
IDEA



august 10 . 2002

my





Jan. 27. 2002 Stuttgart.



Alberto,
Emilio
& Alejandro
investigando
en la parada
del bus para ir
de la Weiskenhof
a la Bankhoff



vienen a L.C.



desde L.C. se podrá ver
nuestro museo perfecta-
mente.

y un poquito desde Uffizi

tramando como carreteros