

Made in the U.S.A.  
Fabriqué aux États-Unis  
Hecho en E.E.U.U.

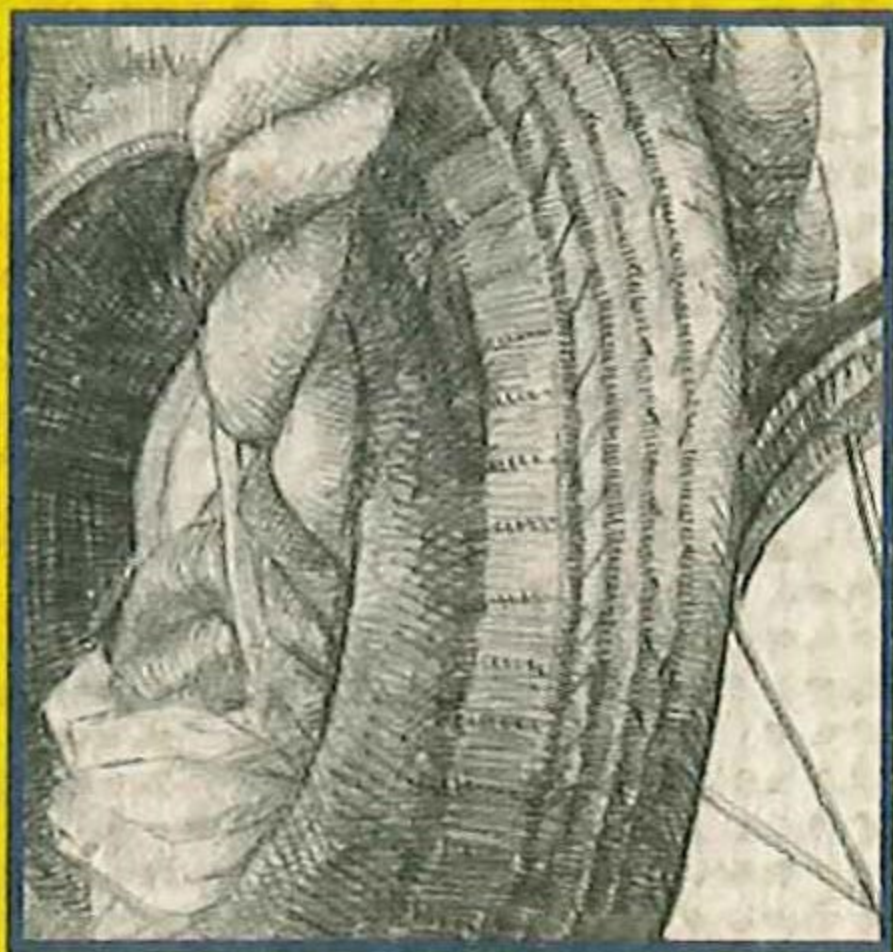
Strathmore Artist Papers™  
A division of Pacon Corporation  
Neenah, WI 54956  
[www.strathmoreartist.com](http://www.strathmoreartist.com)

*Navidad / 2016*  
*2015-*

® and ™ used under license from Mohawk Fine Papers Inc.  
® et ™ utilisés sous licence de Mohawk Fine Papers Inc.  
® y ™ usadas de acuerdo con licencia de Mohawk Fine Papers Inc.

**P 61**

300 Series | Better    Série 300 | Mieux    Serie 300 | Mejor



350-3



Rovan Yu

 Strathmore®

# Sketch

Sketch paper fine tooth surface

Papier à croquis surface fine

Papel para boceto superficie dentada suave

Acid free. For use with dry media.

Sans acide. Pour une utilisation avec des medias secs.

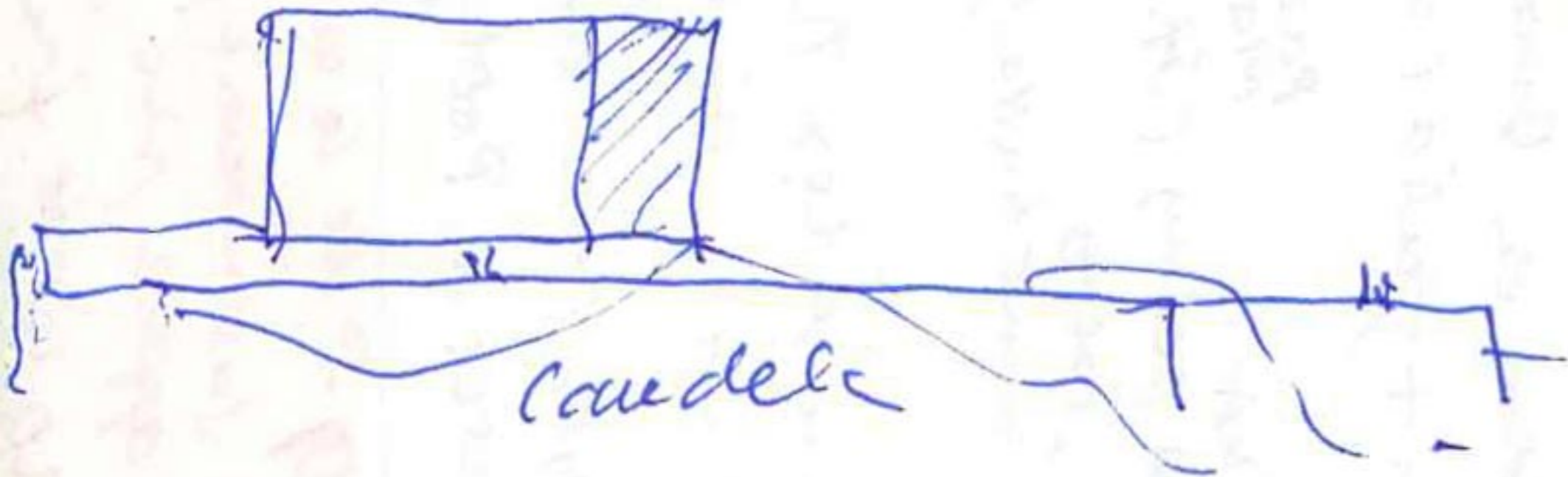
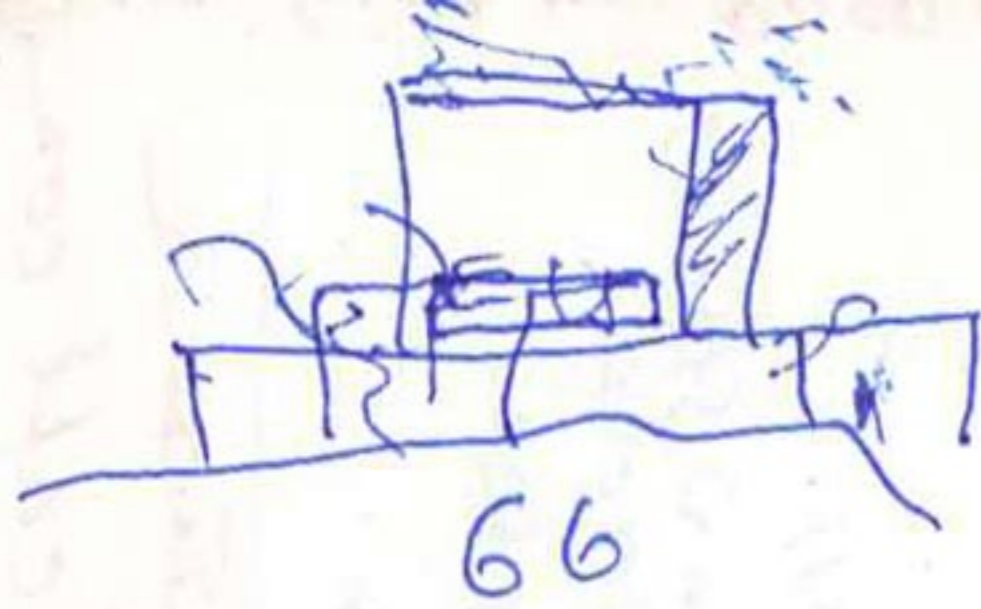
Sin ácido. Para uso con medios en seco.

100 sheets, feuilles, hojas

3.5 in. x 5 in. (8.9 x 12.7 cm) 50 lb. (74 g/m<sup>2</sup>)



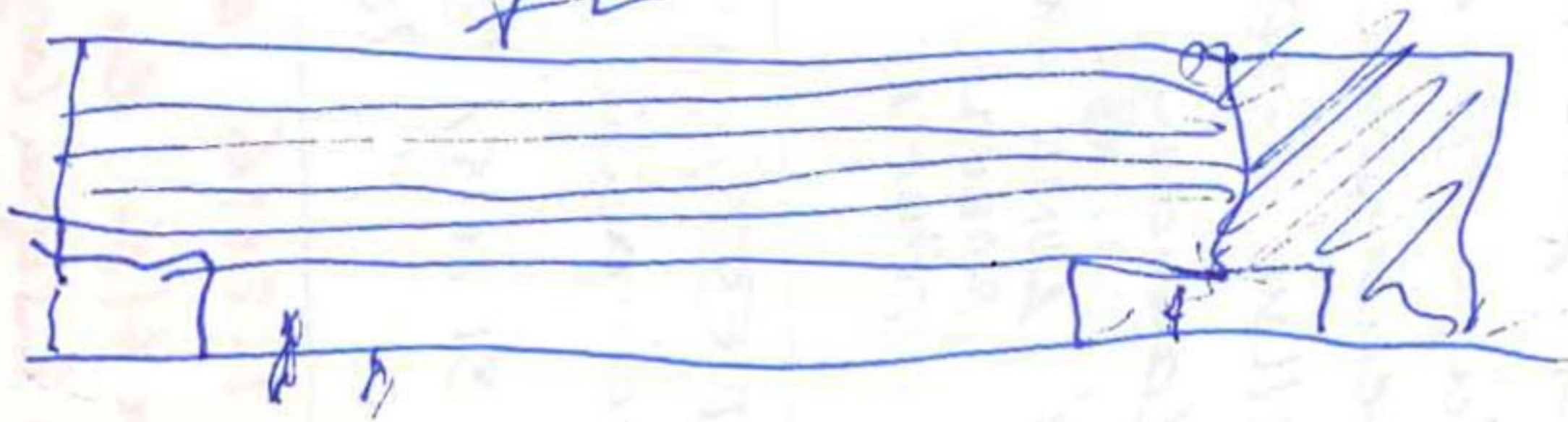
Today. Teodora said no



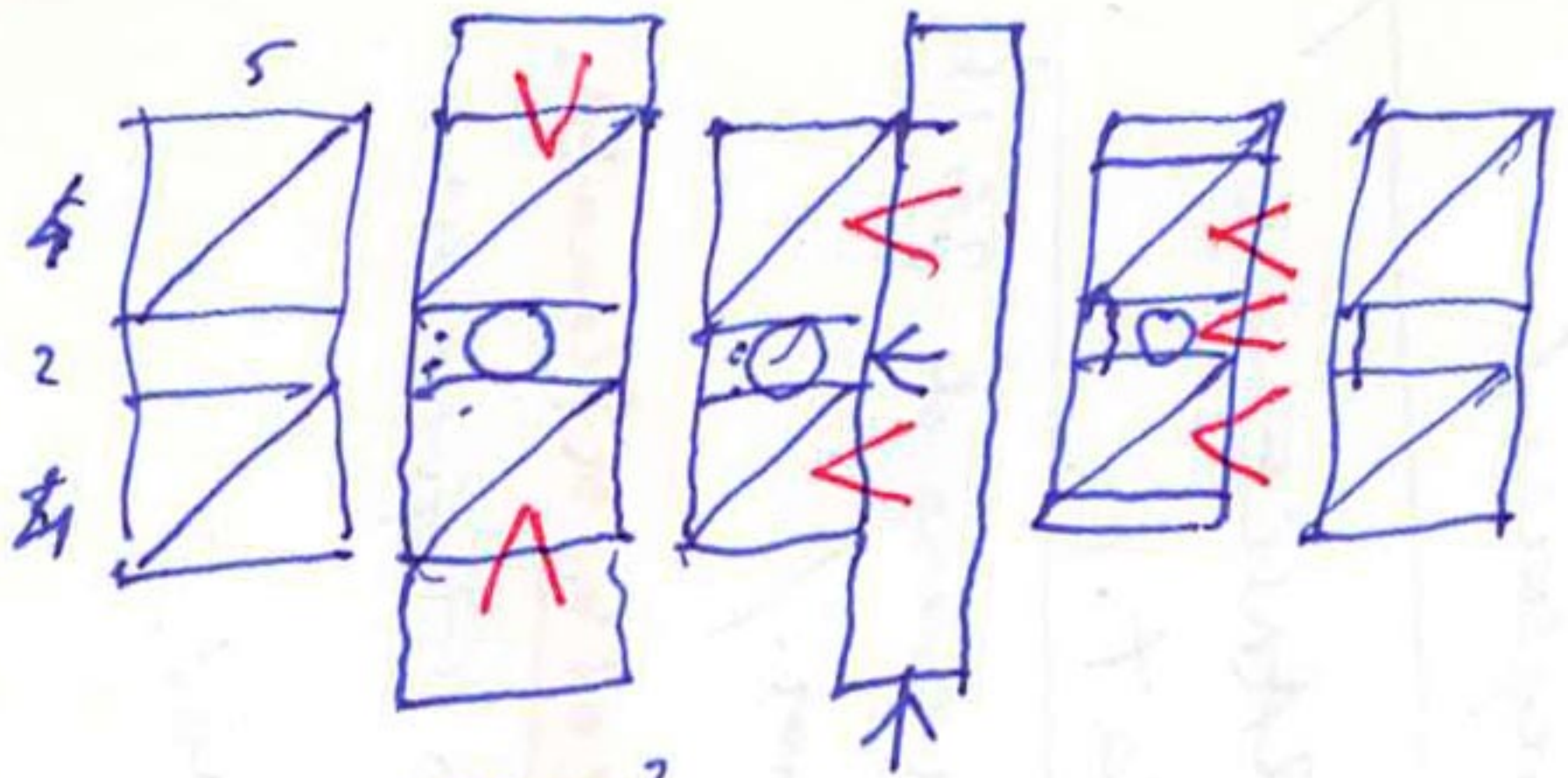
Dec. 30 2015 NY

ny

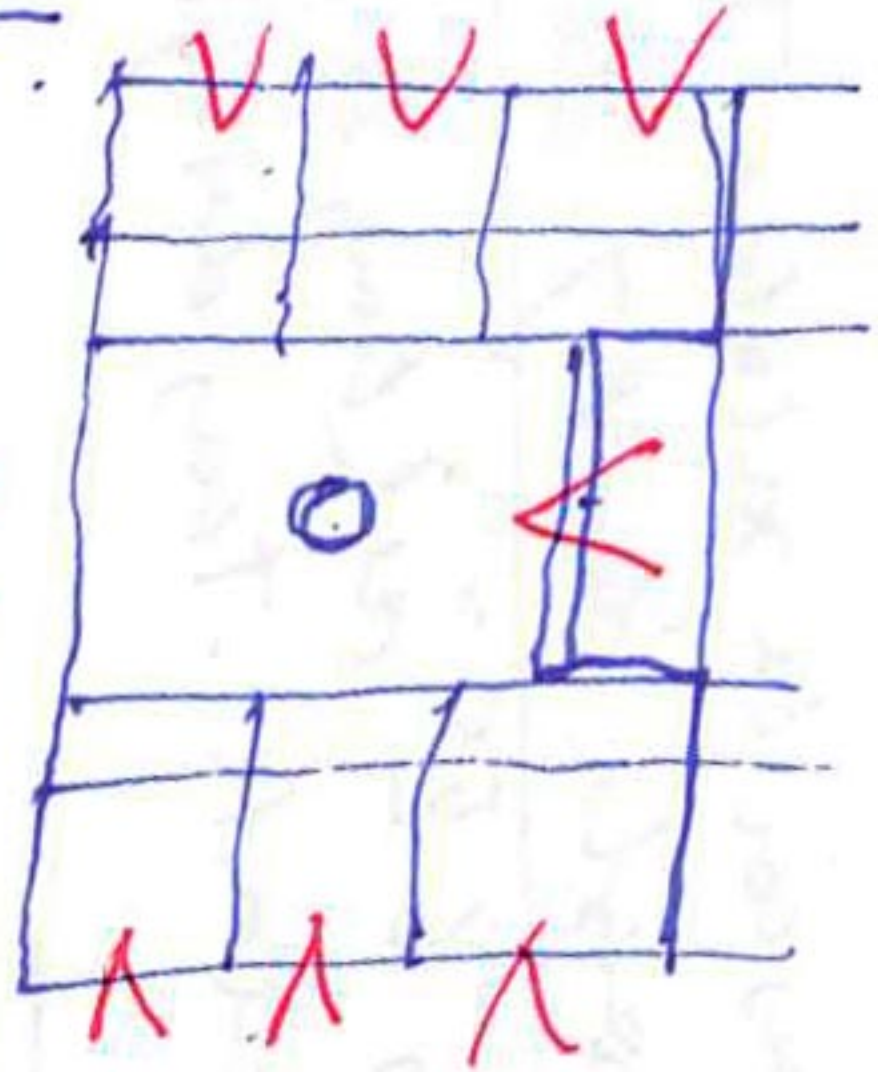
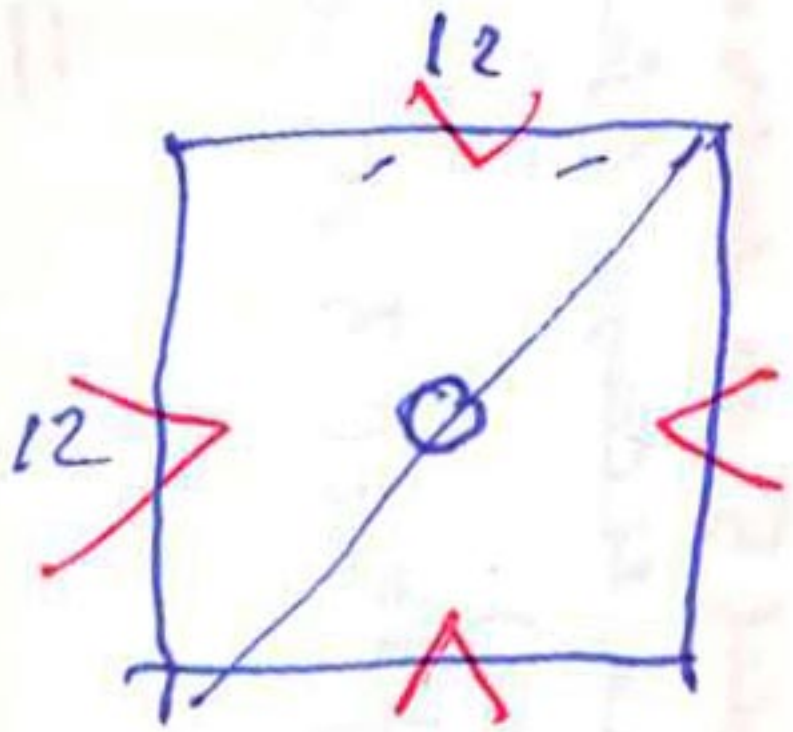
Fz



- + Fraumton 28 jan
- + Tournai (1.11.11)
- + ETSAM regular.
- + NYUBM

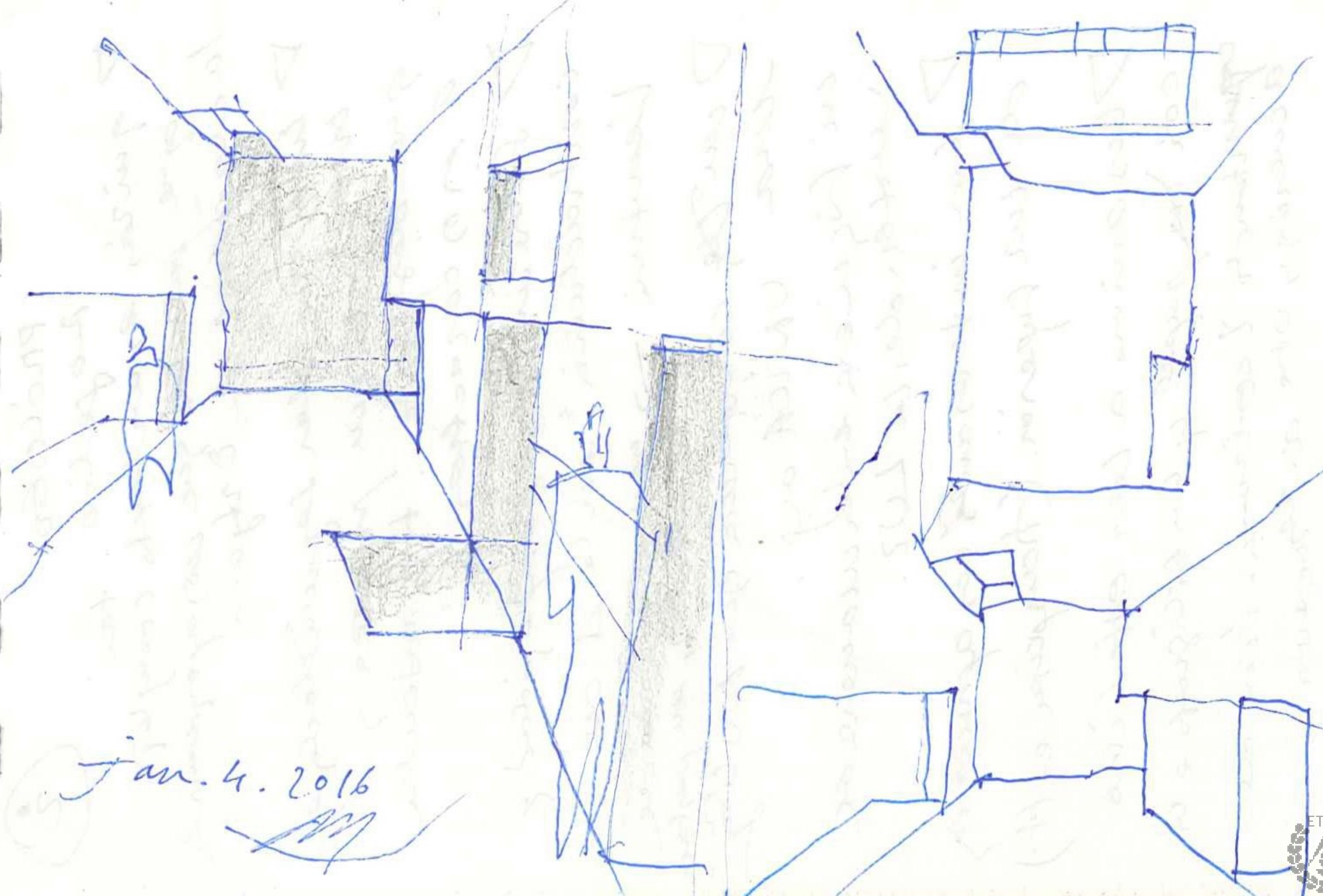


150 m<sup>2</sup>



*[Faint, mostly illegible handwritten text in blue and red ink, likely bleed-through from the reverse side of the page.]*

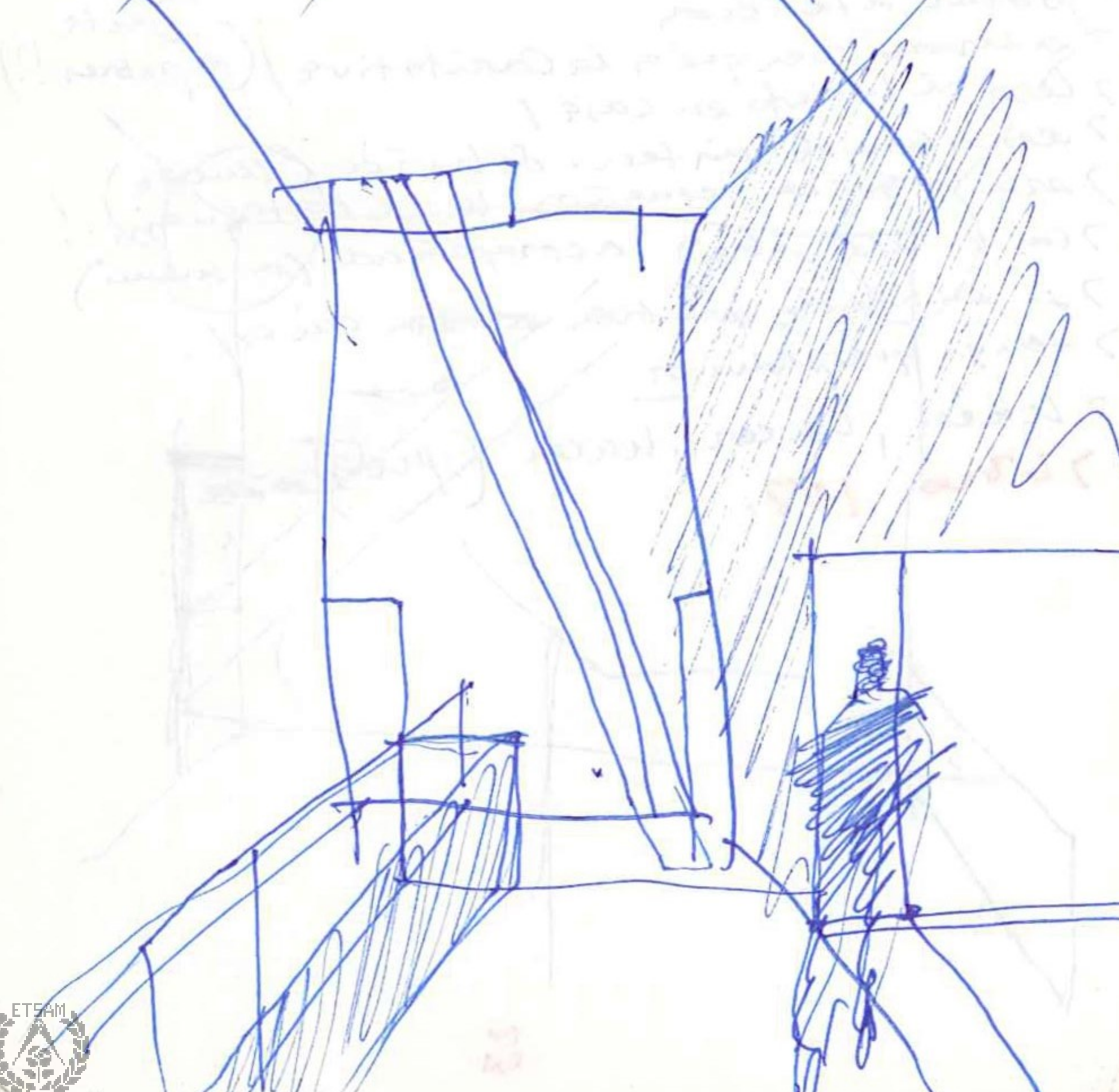
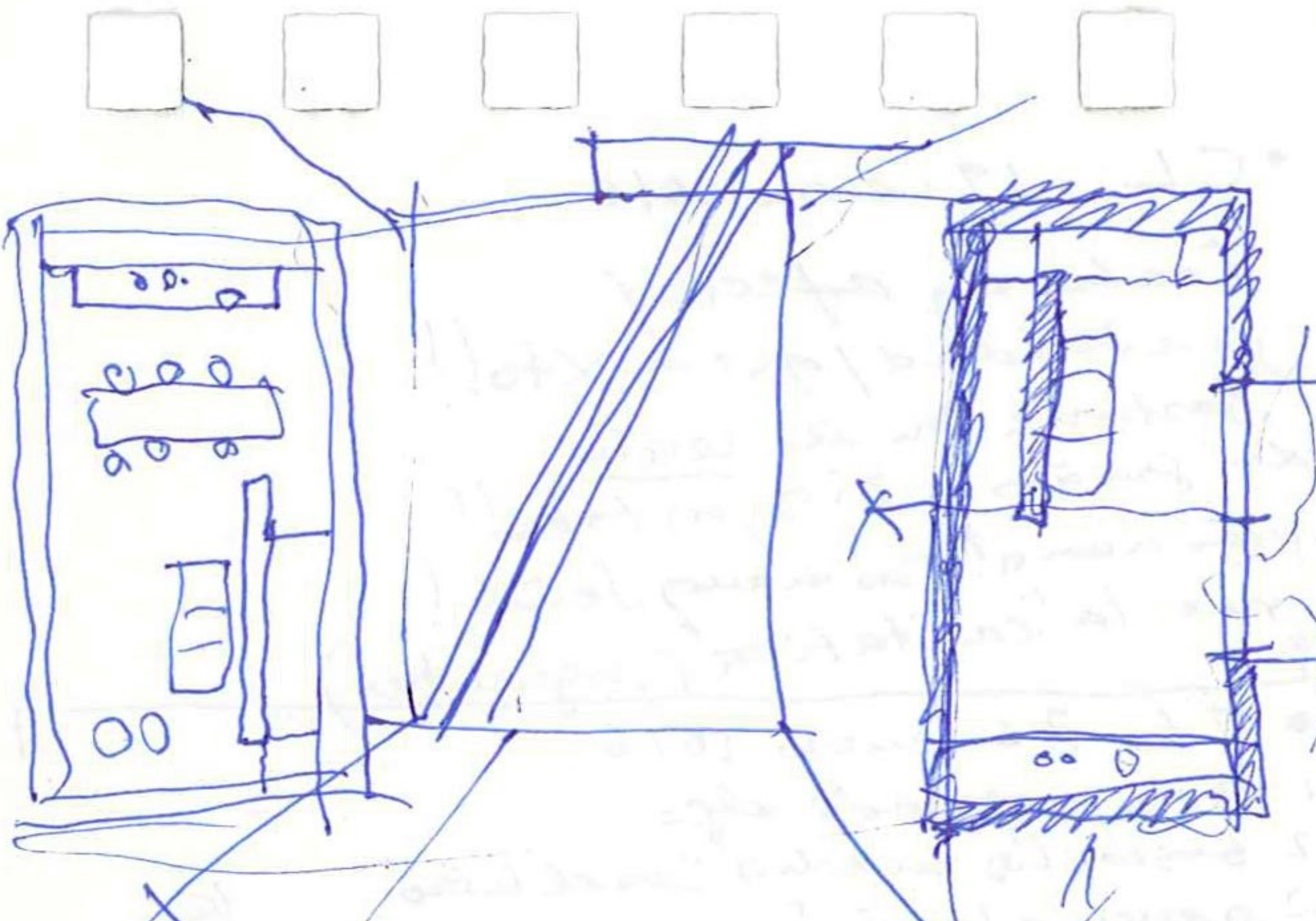


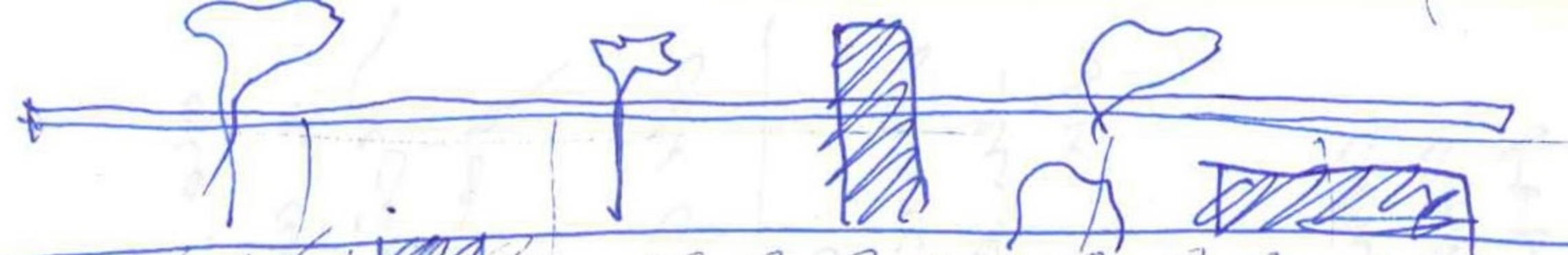


13

Jan. 4. 2016





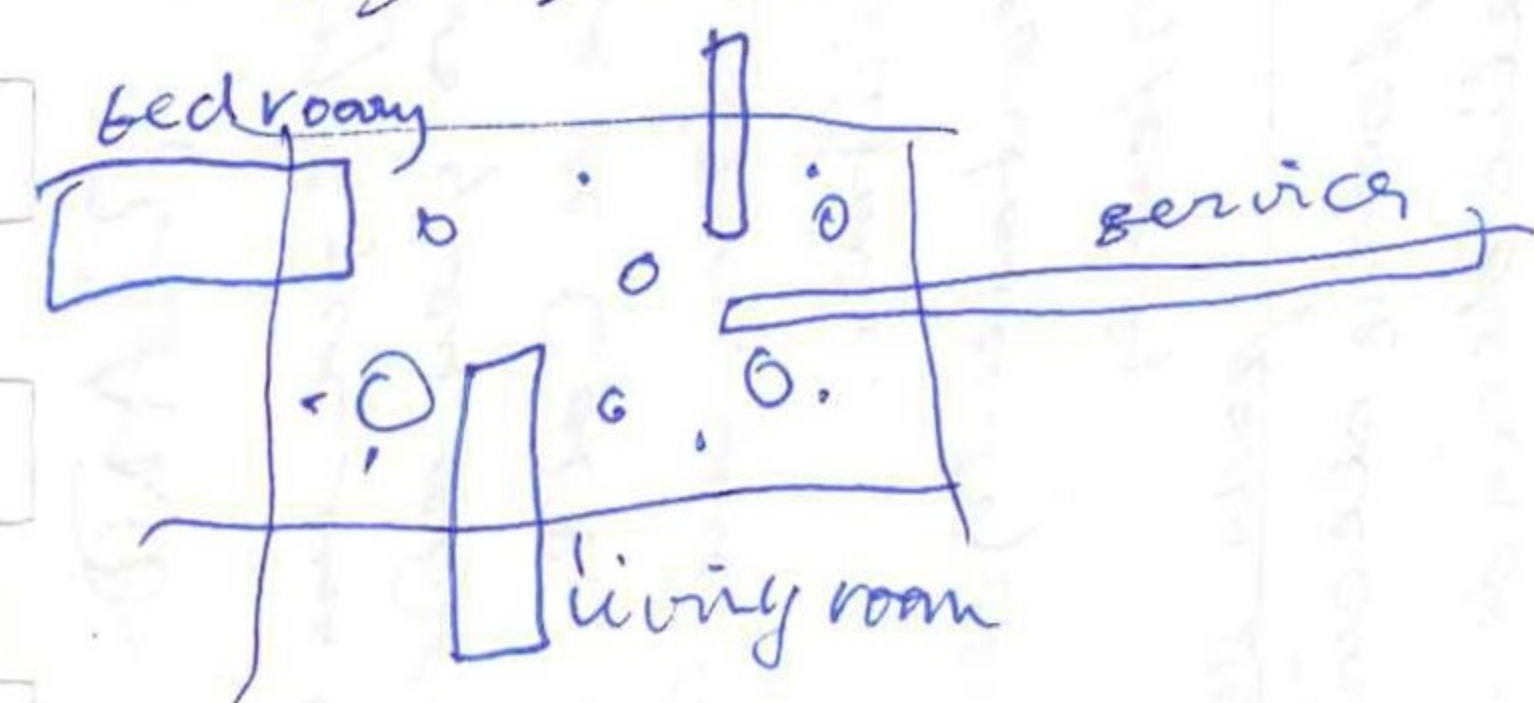


UALA

AG+CB

January 14. 2016

My 25

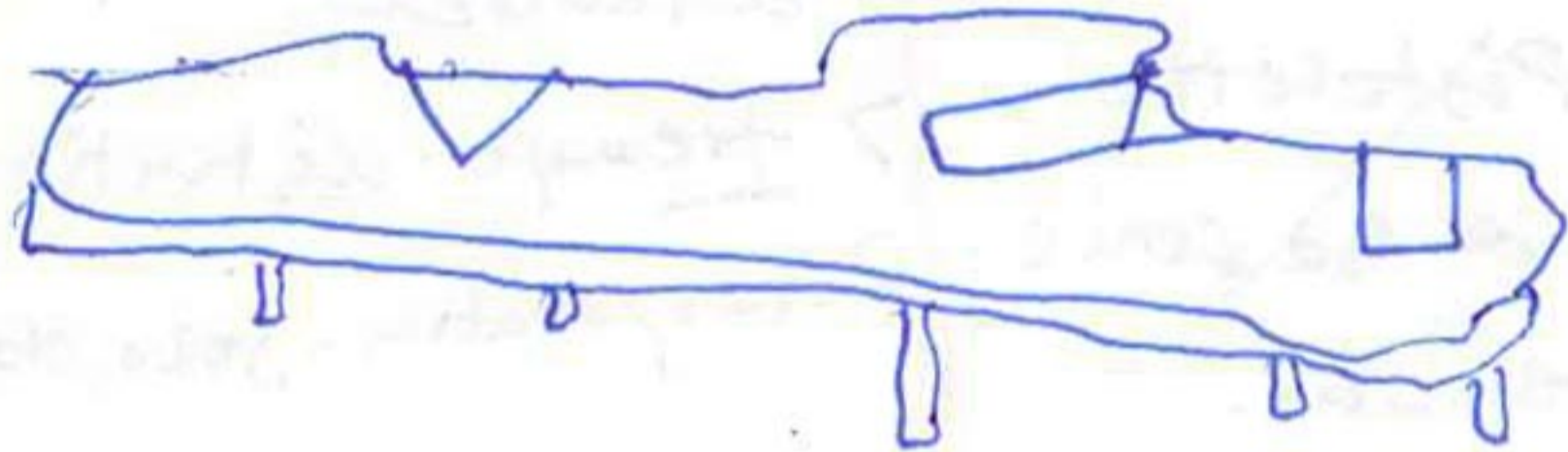


TOIT  
TETTO  
CUBIERTA  
ROOF.

miami

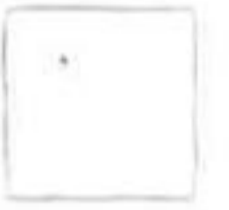


2 1/2



una fombra

a soche full of shadow.





BLACK  
WALL

Chiara Bini.



SPHERE

portuguese. (ajuda!)



CLOUD

Daniela Aluana



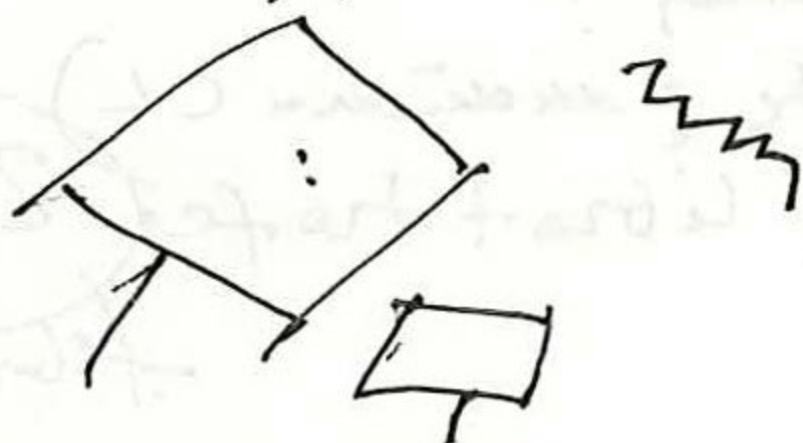
HILLS

Ana



ROCK.

Giuseppe Rizza.



WHITE.  
PLATFORMS.

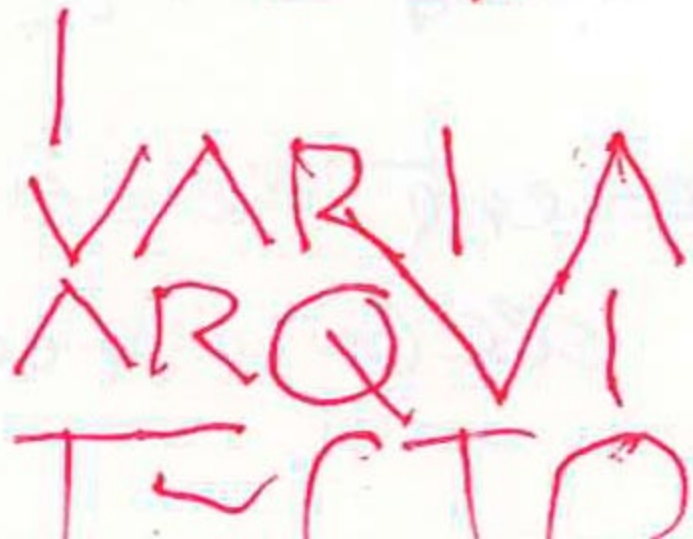
Simone.





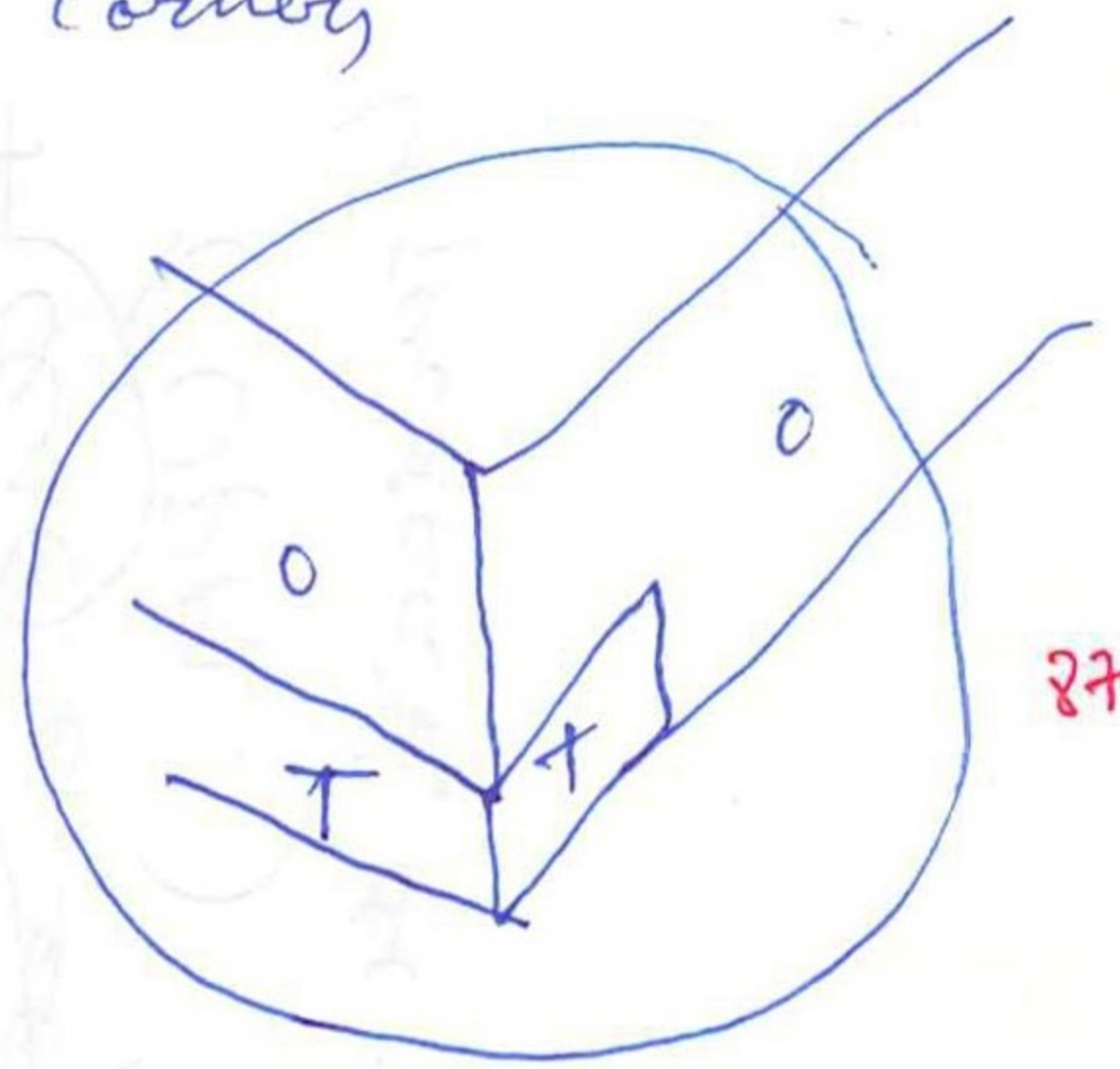
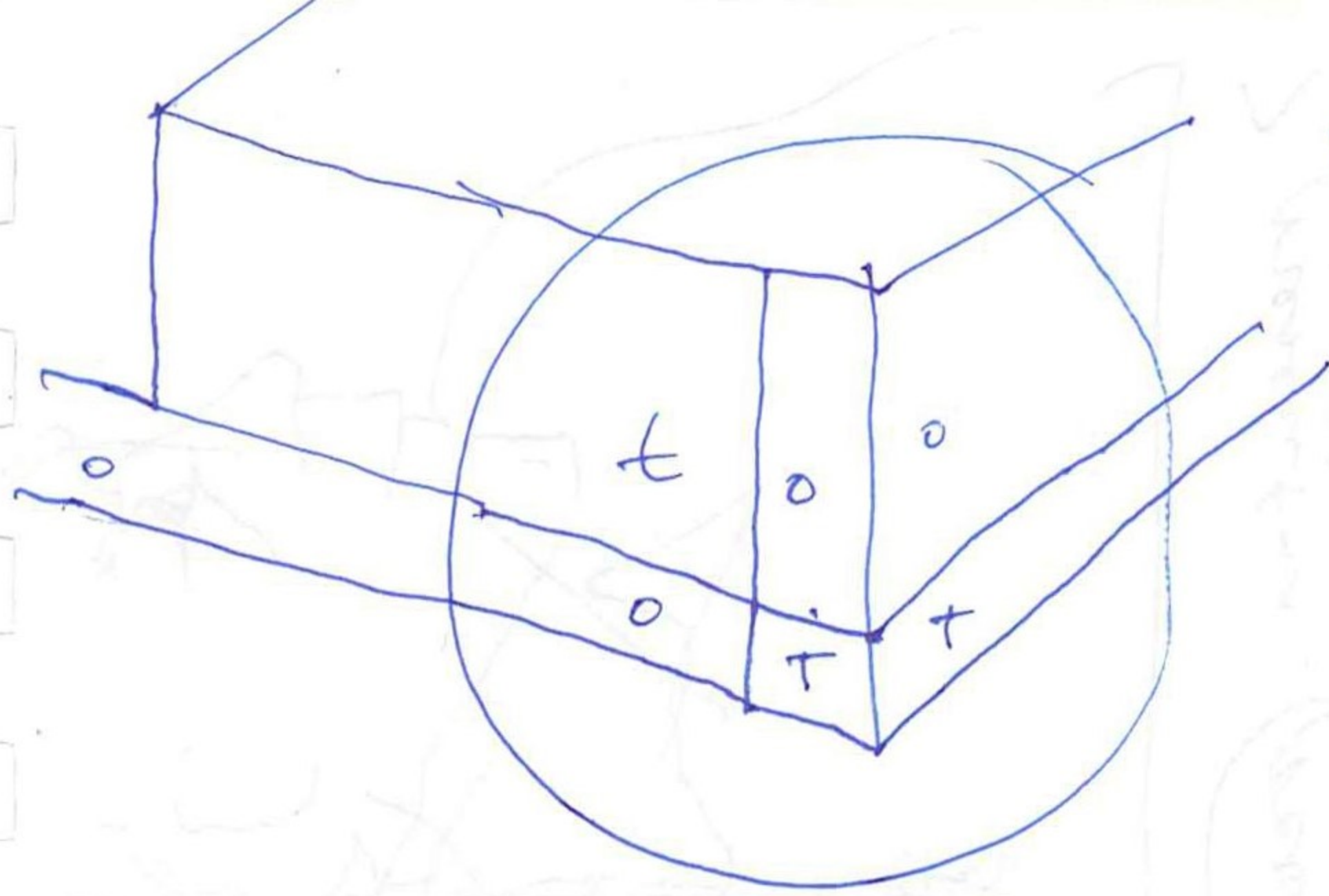
con las solapas  
deplegadas.

hacer pruebas  
con "impresión" de maric.

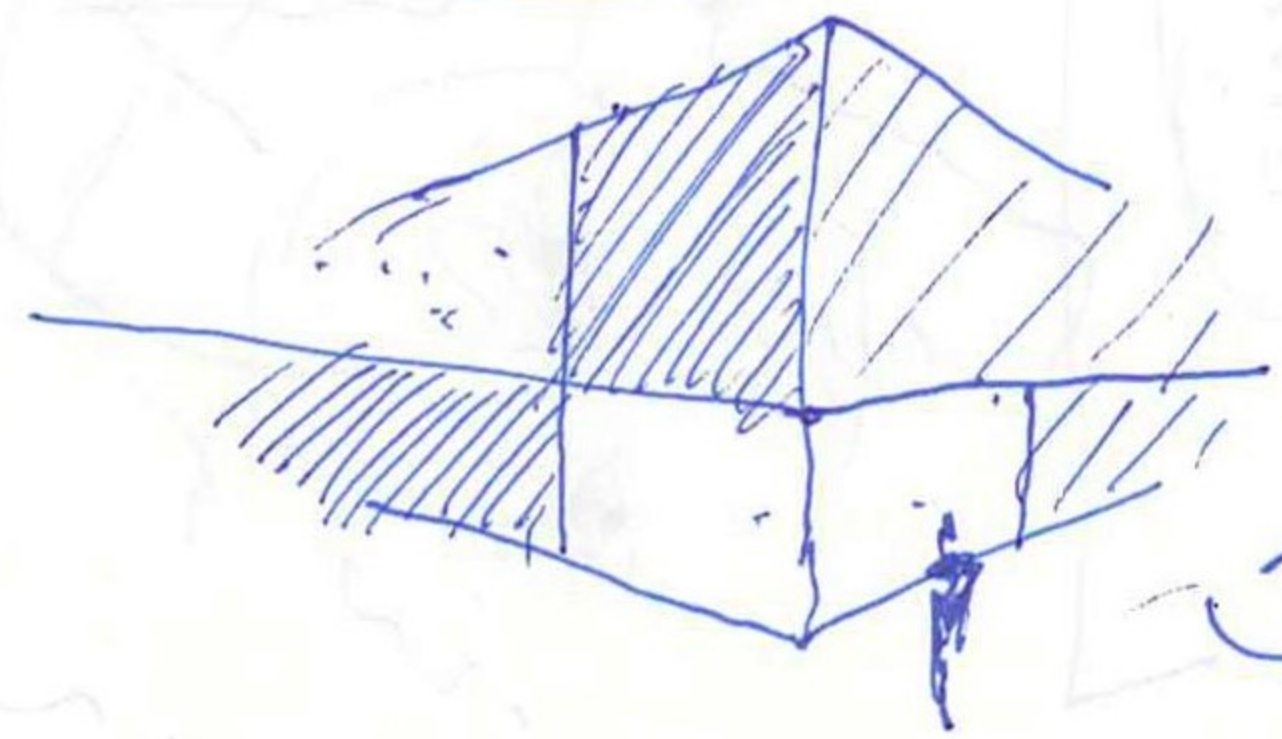




FV  
2 corner



27



My

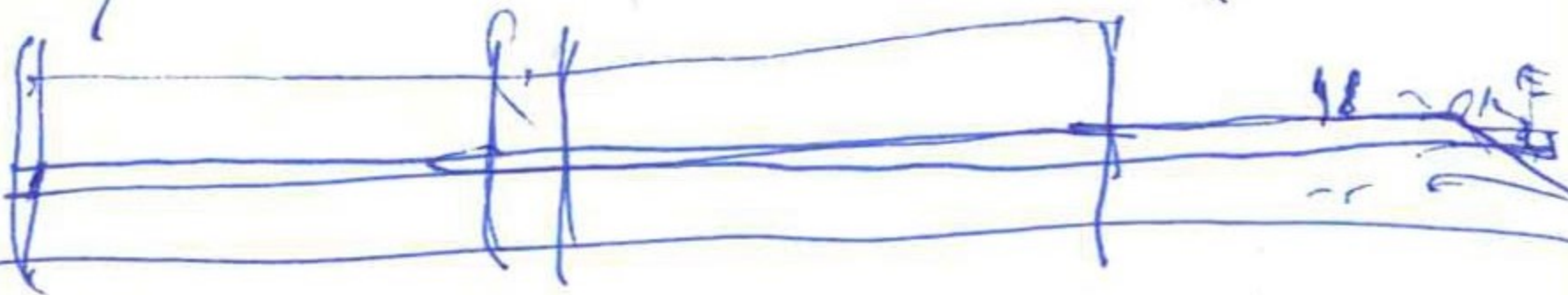
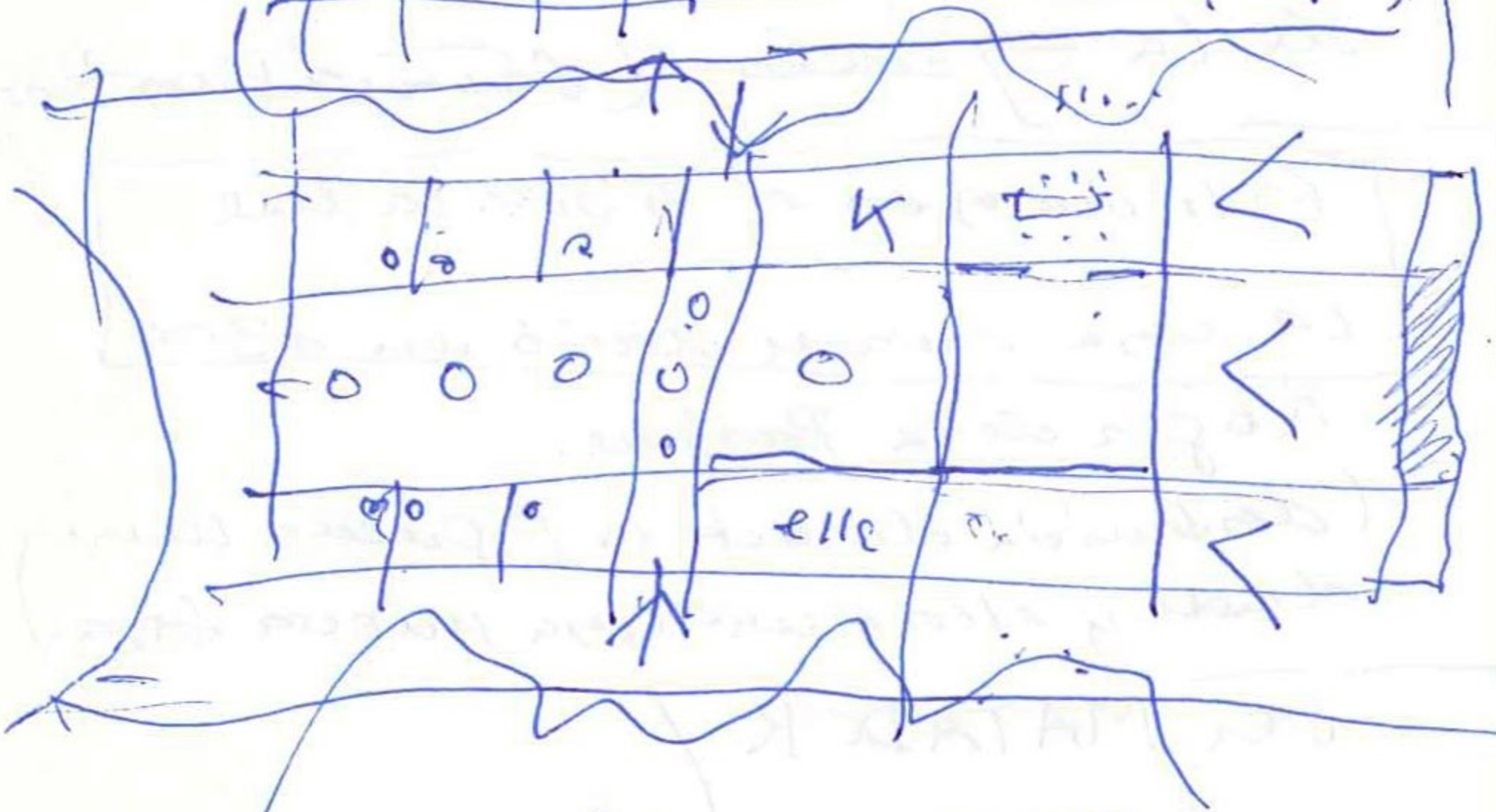
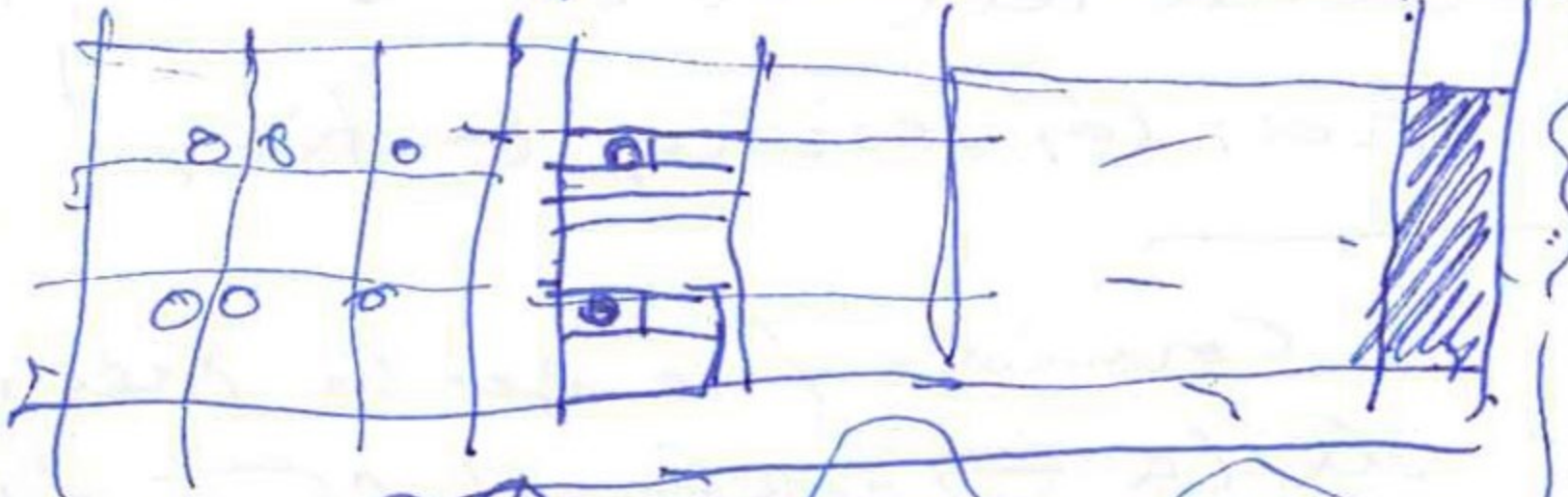
11. April 2016





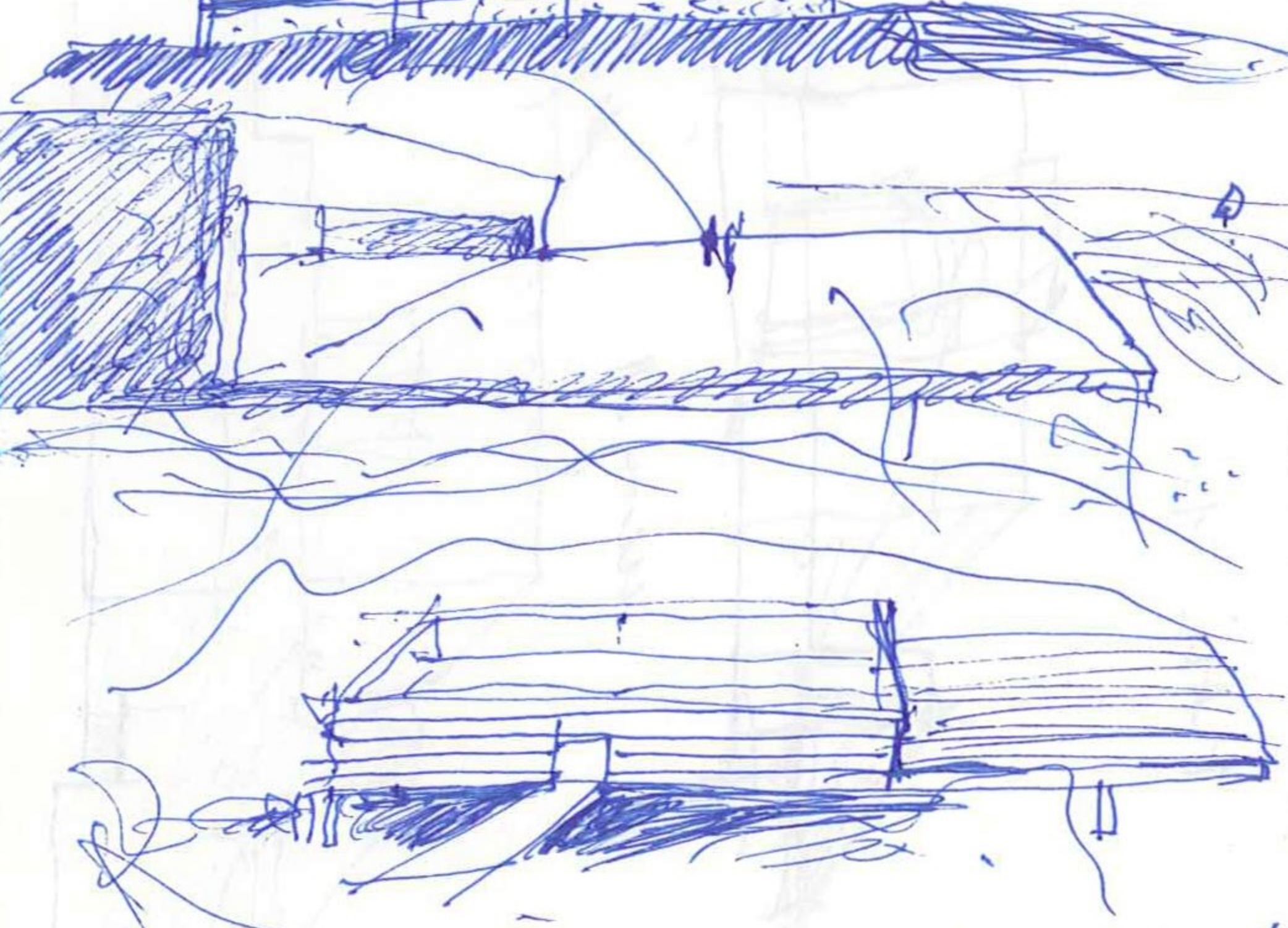
M I A M I

May 6. 2016

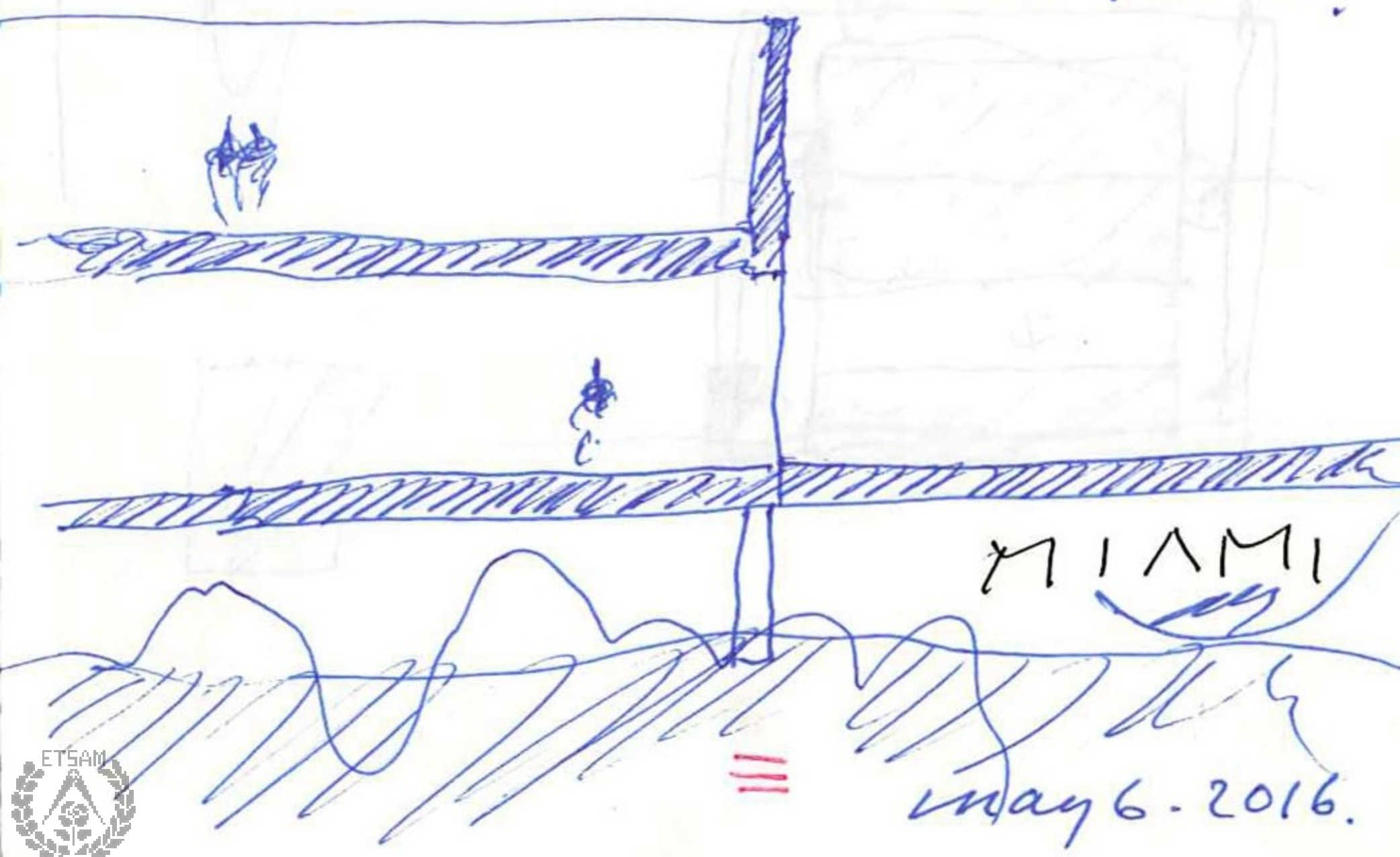




AZOTEA PLATFORM



comme un bateau!

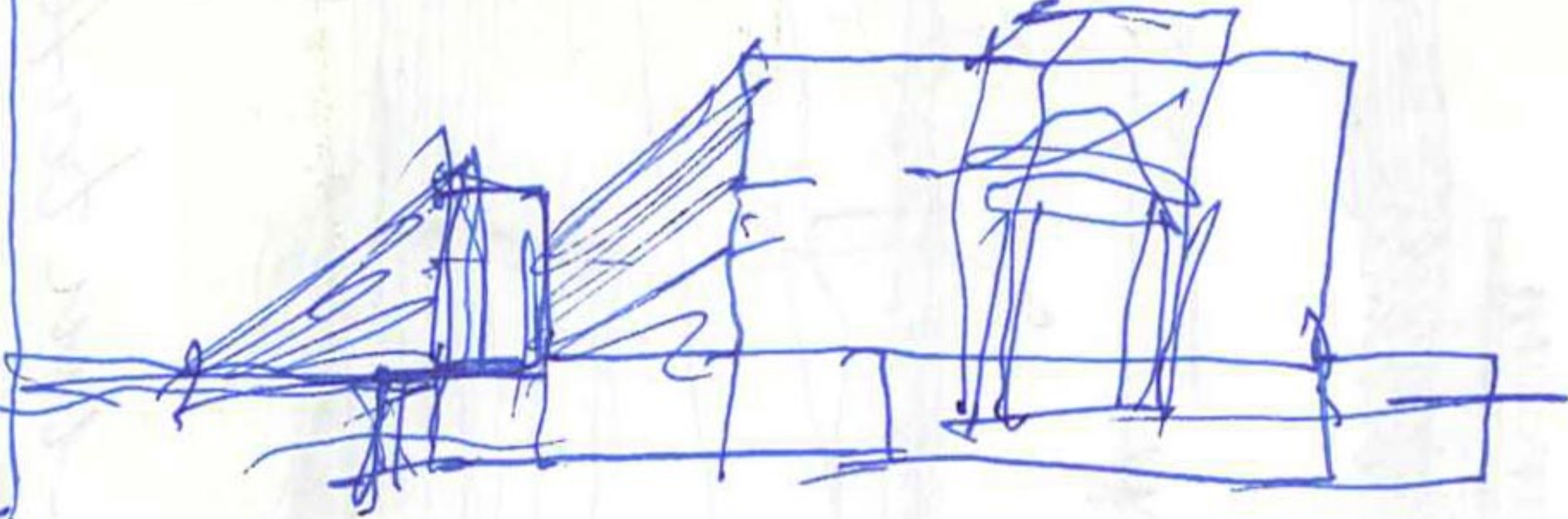
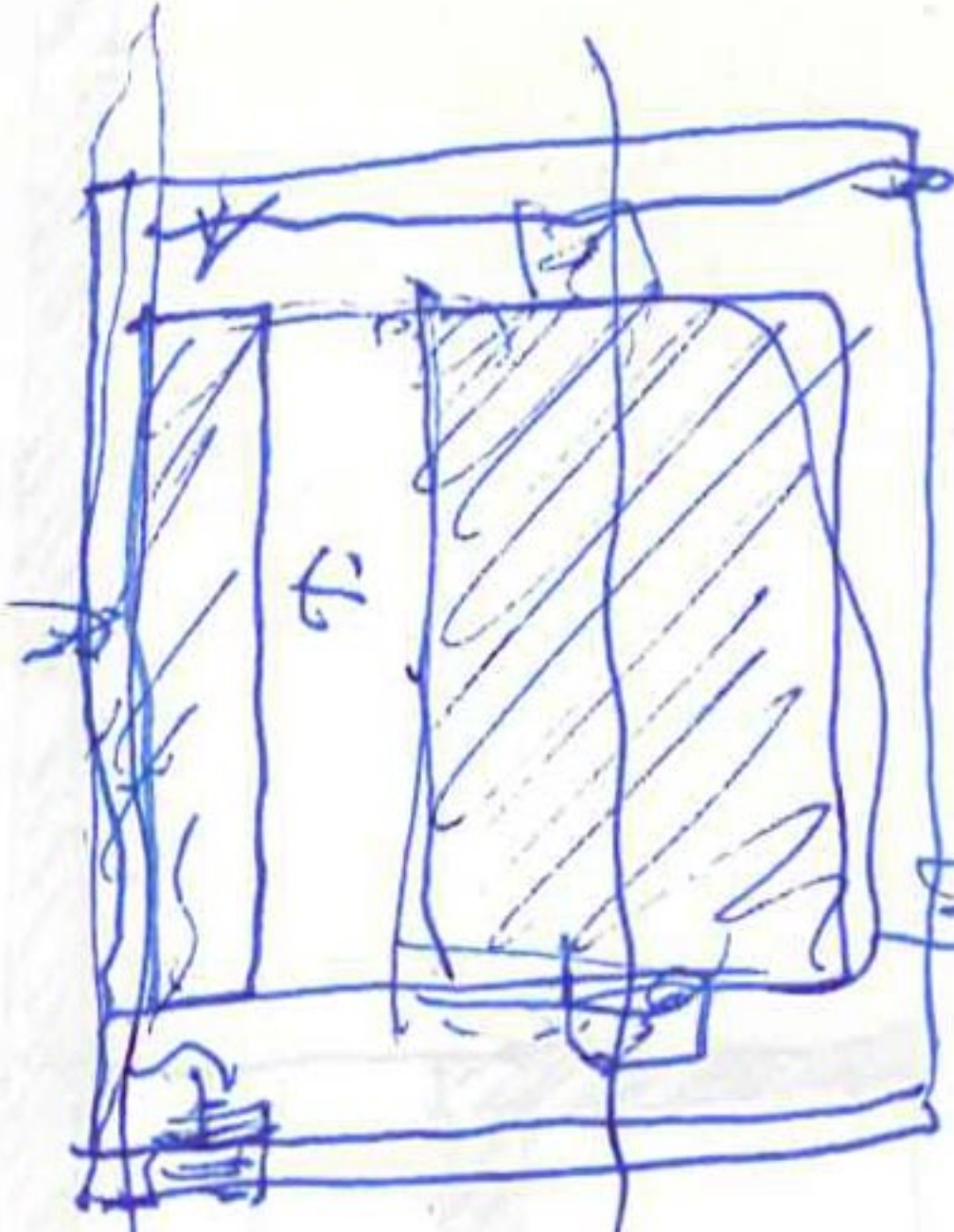


MIAMI

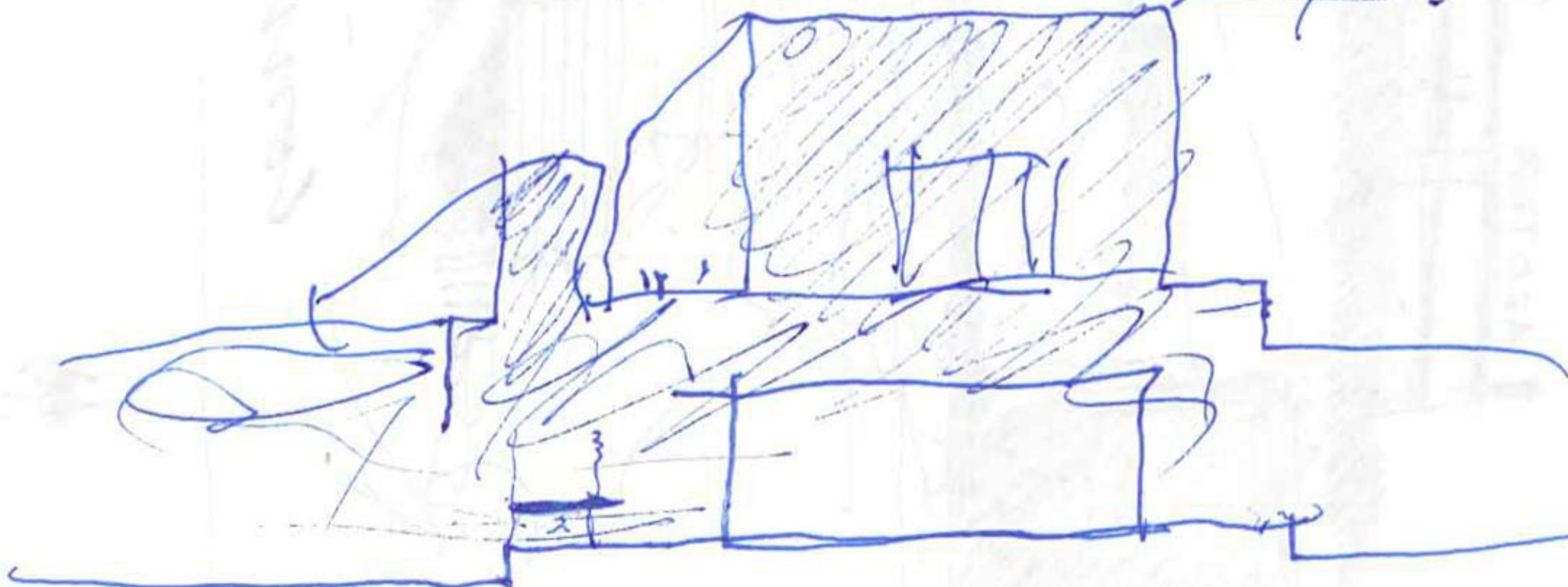
May 6. 2016.



MAU 1



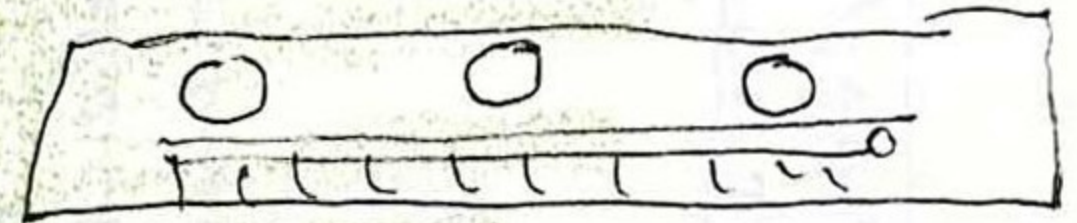
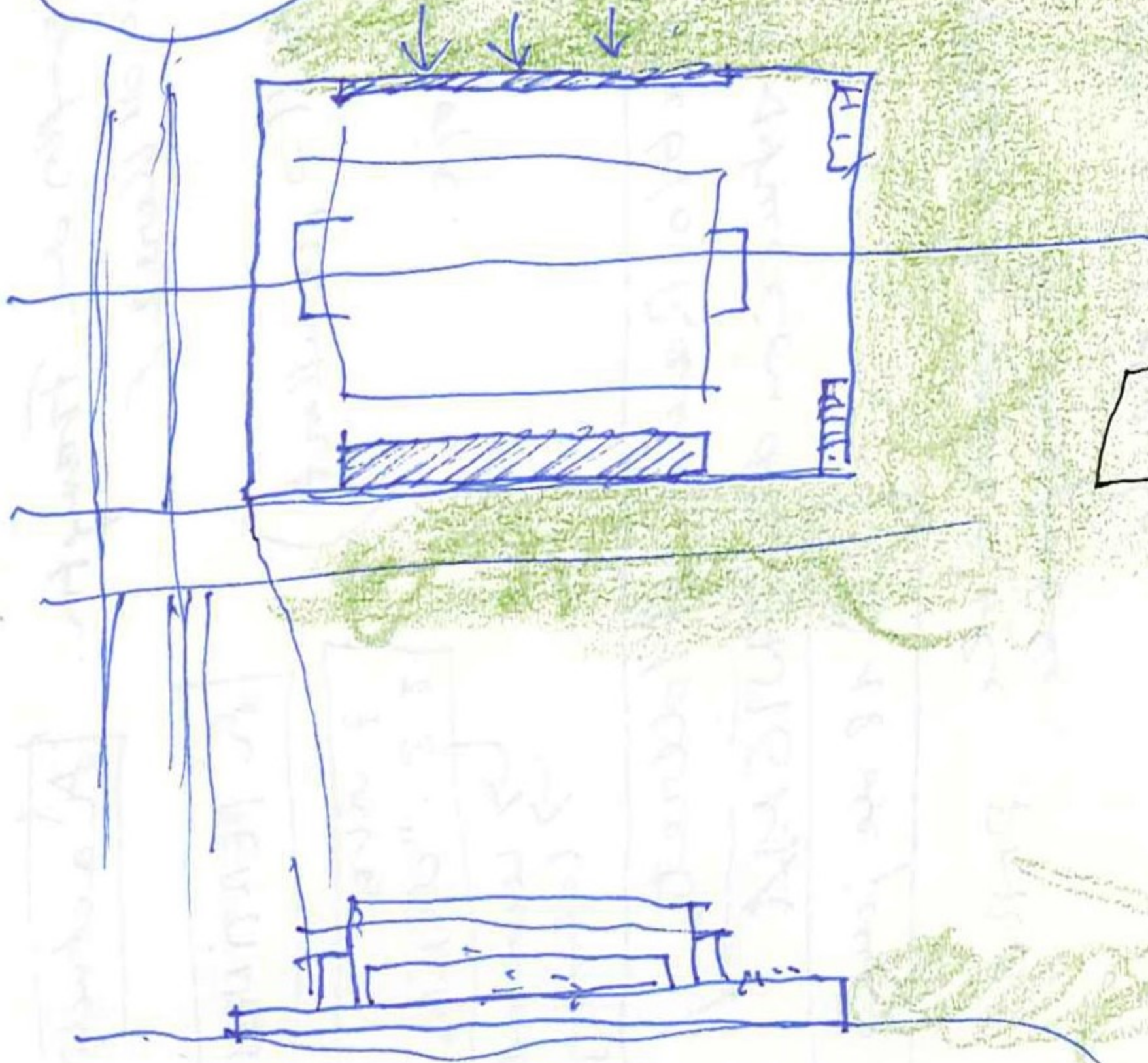
way - 1



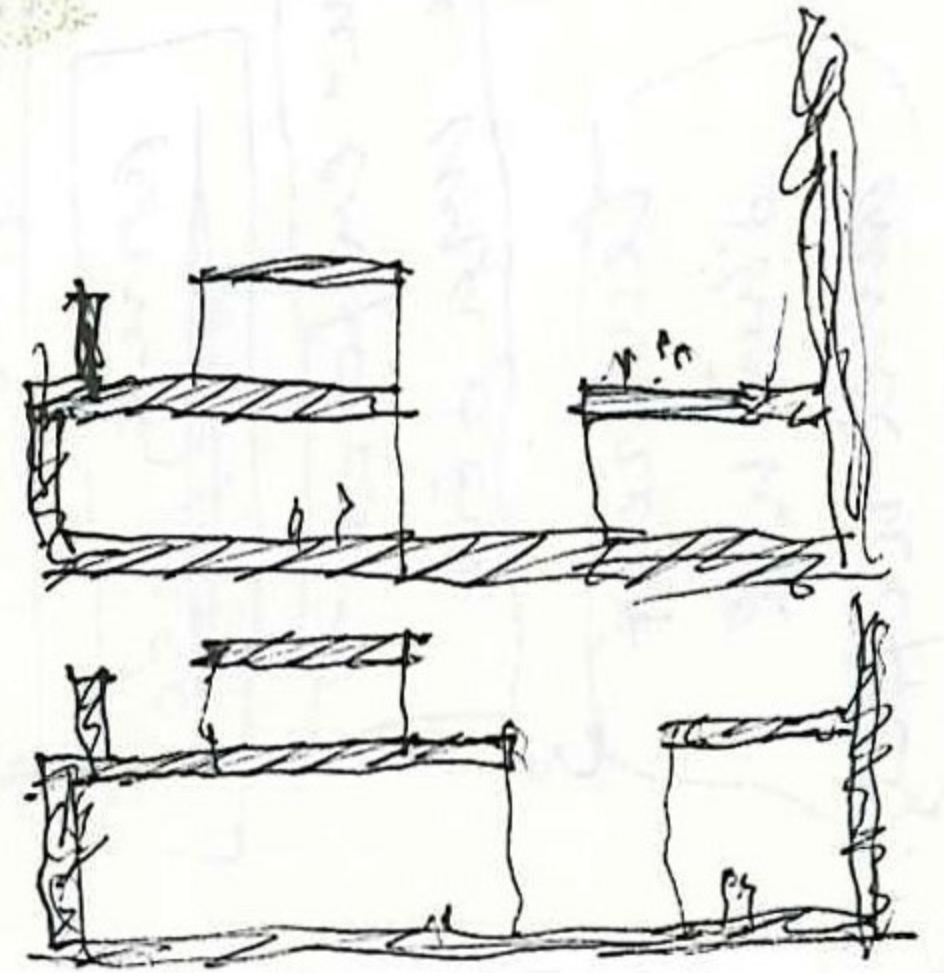
MAU 2

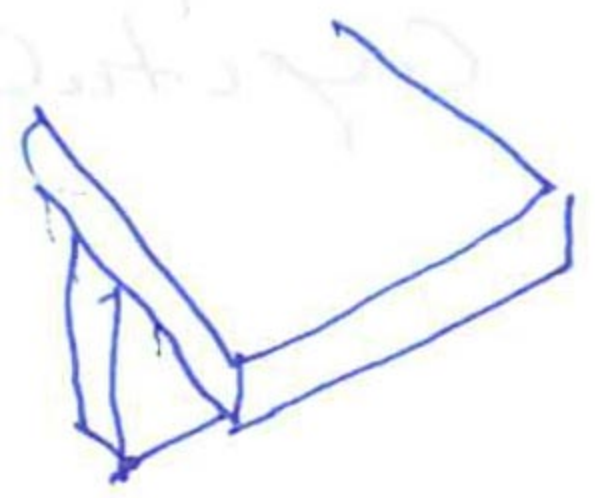
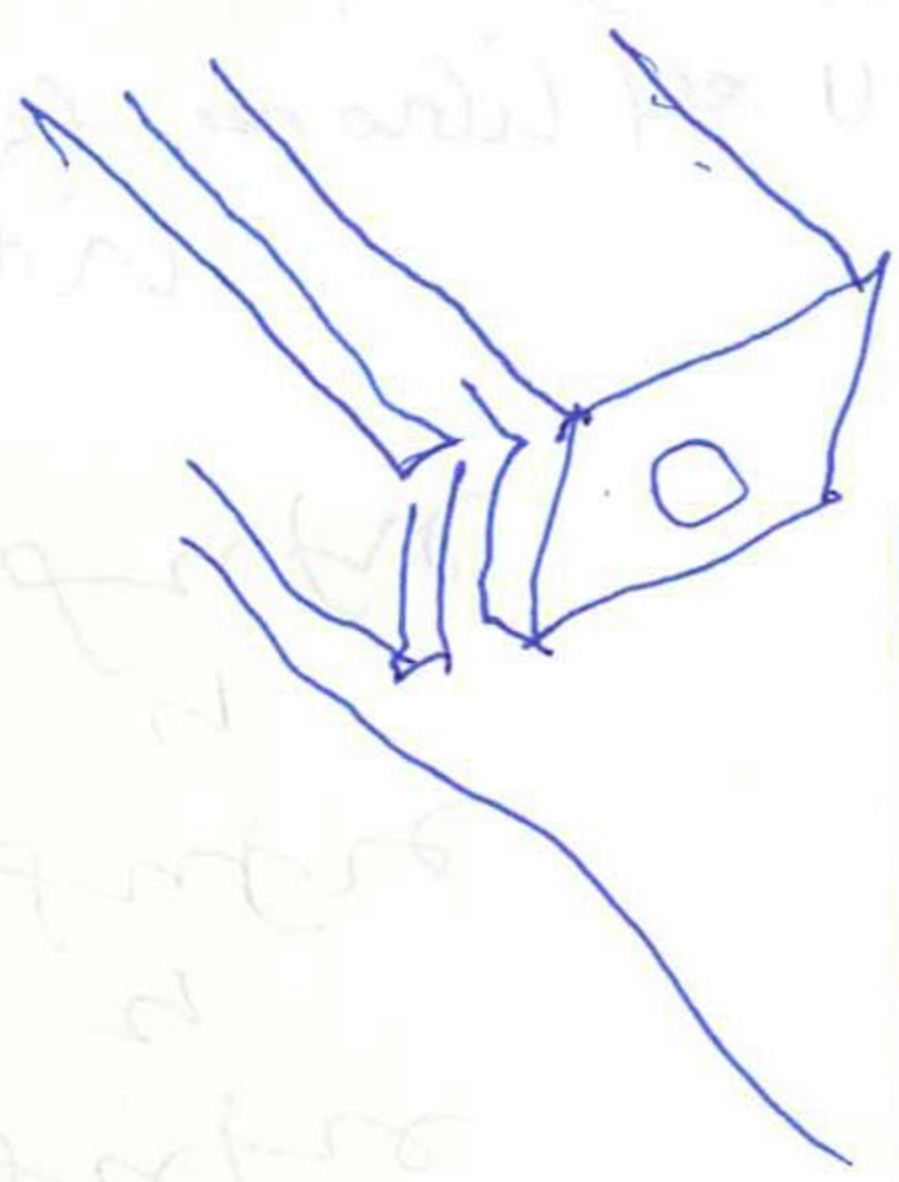
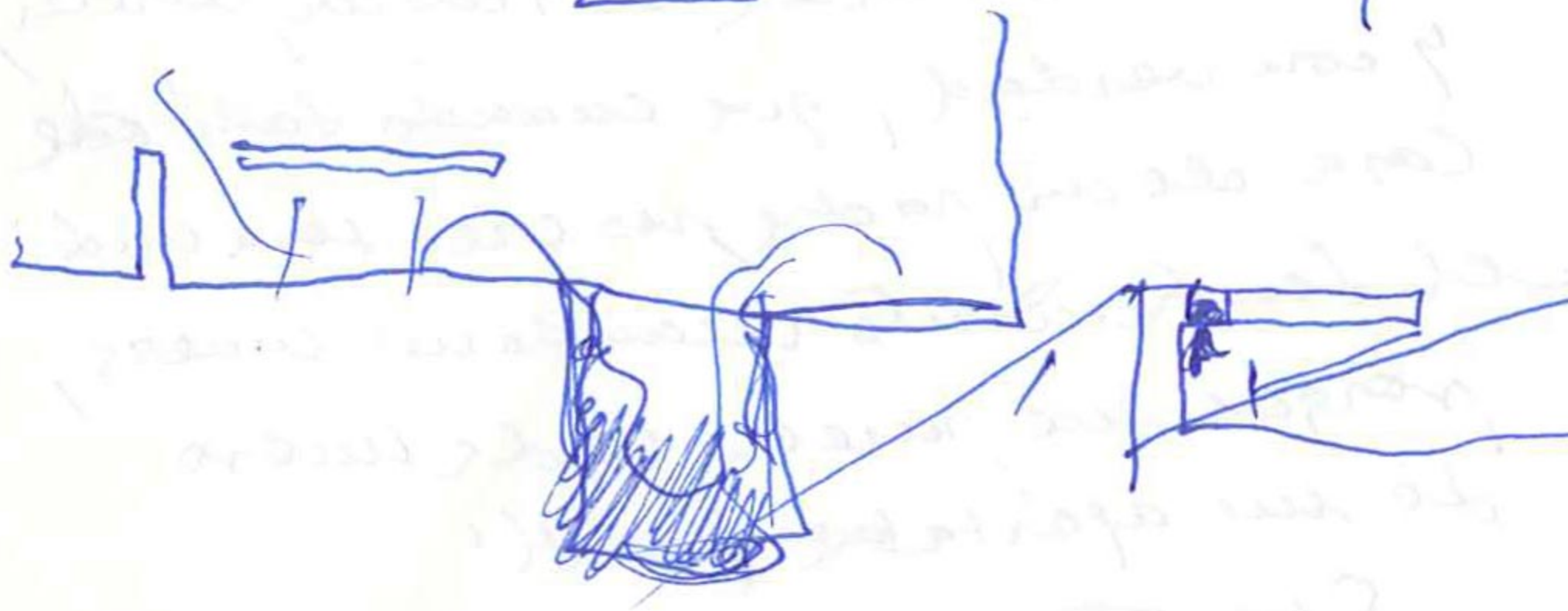
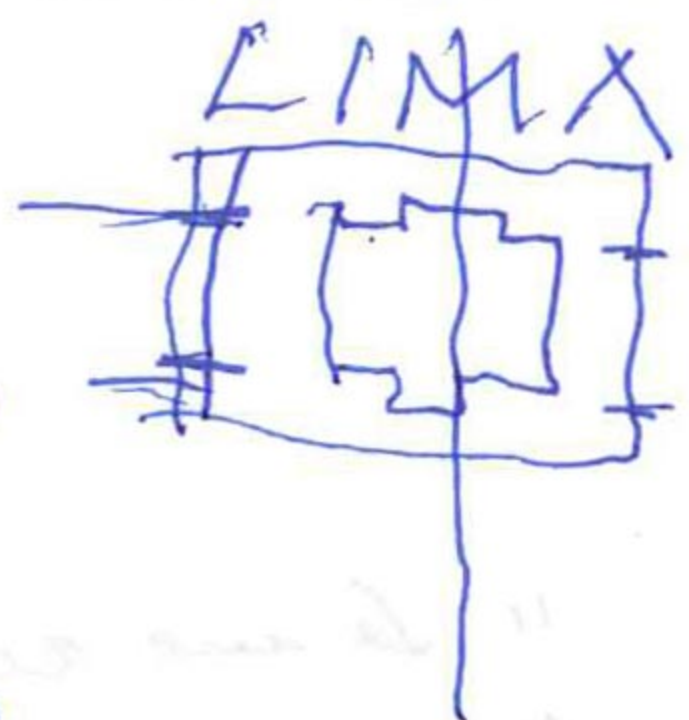
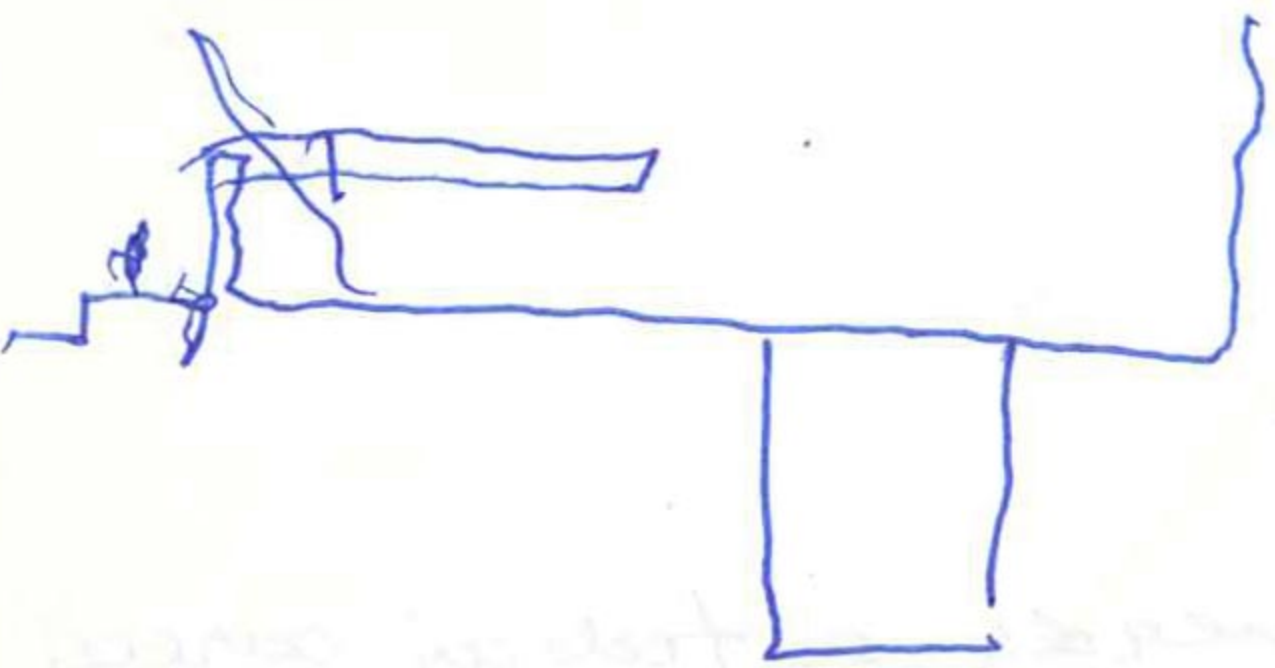
51 998 079 809

tray debate con Nardo y Alejandro



113





18 mayo 2016

181

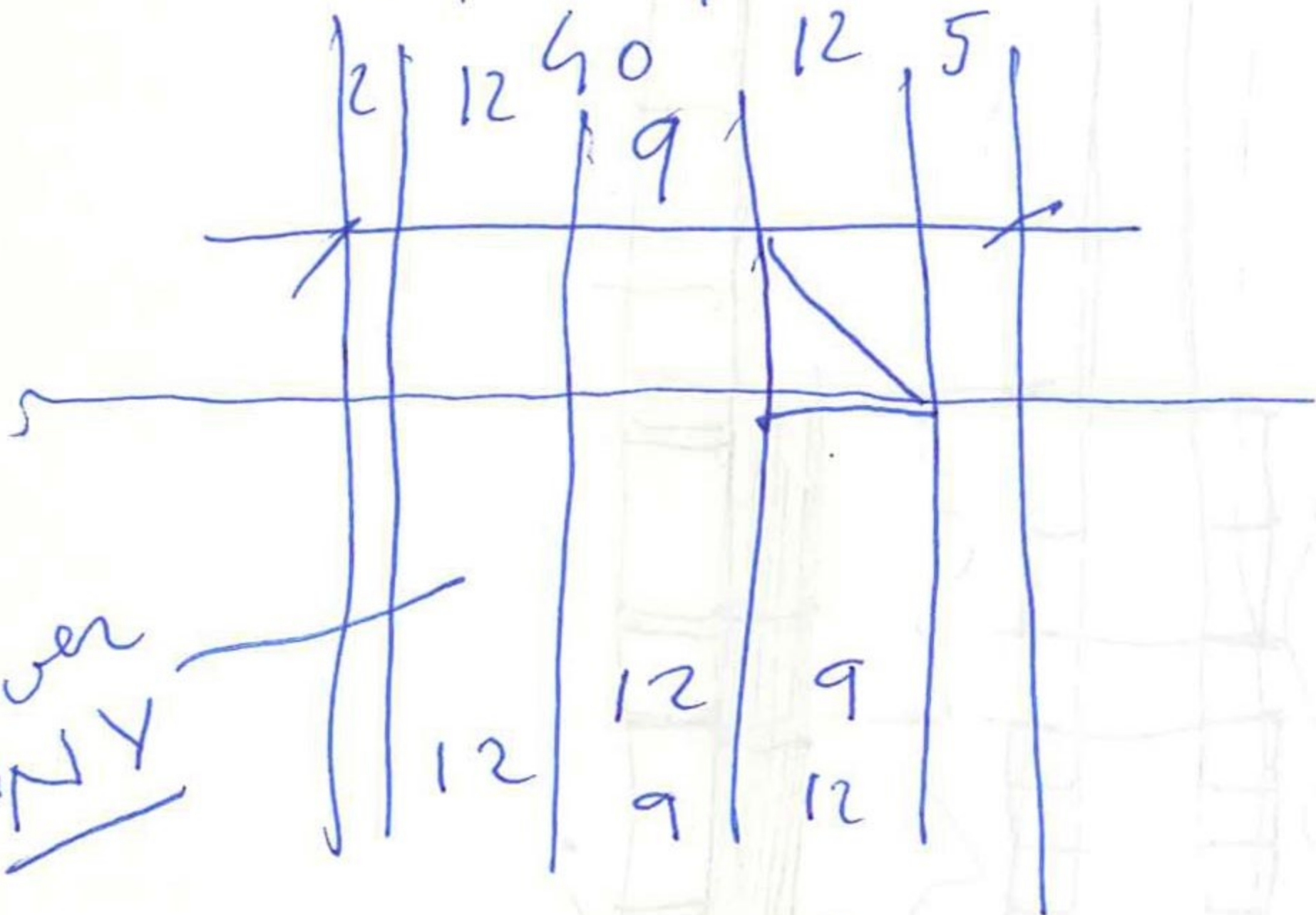
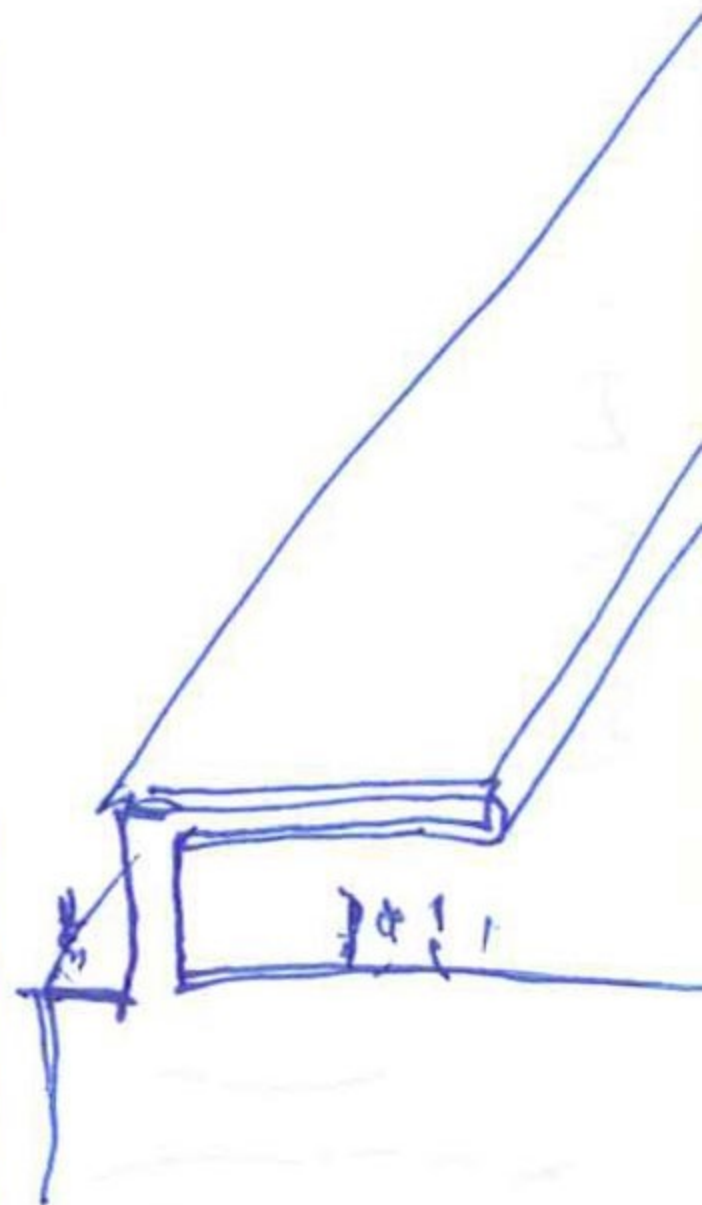
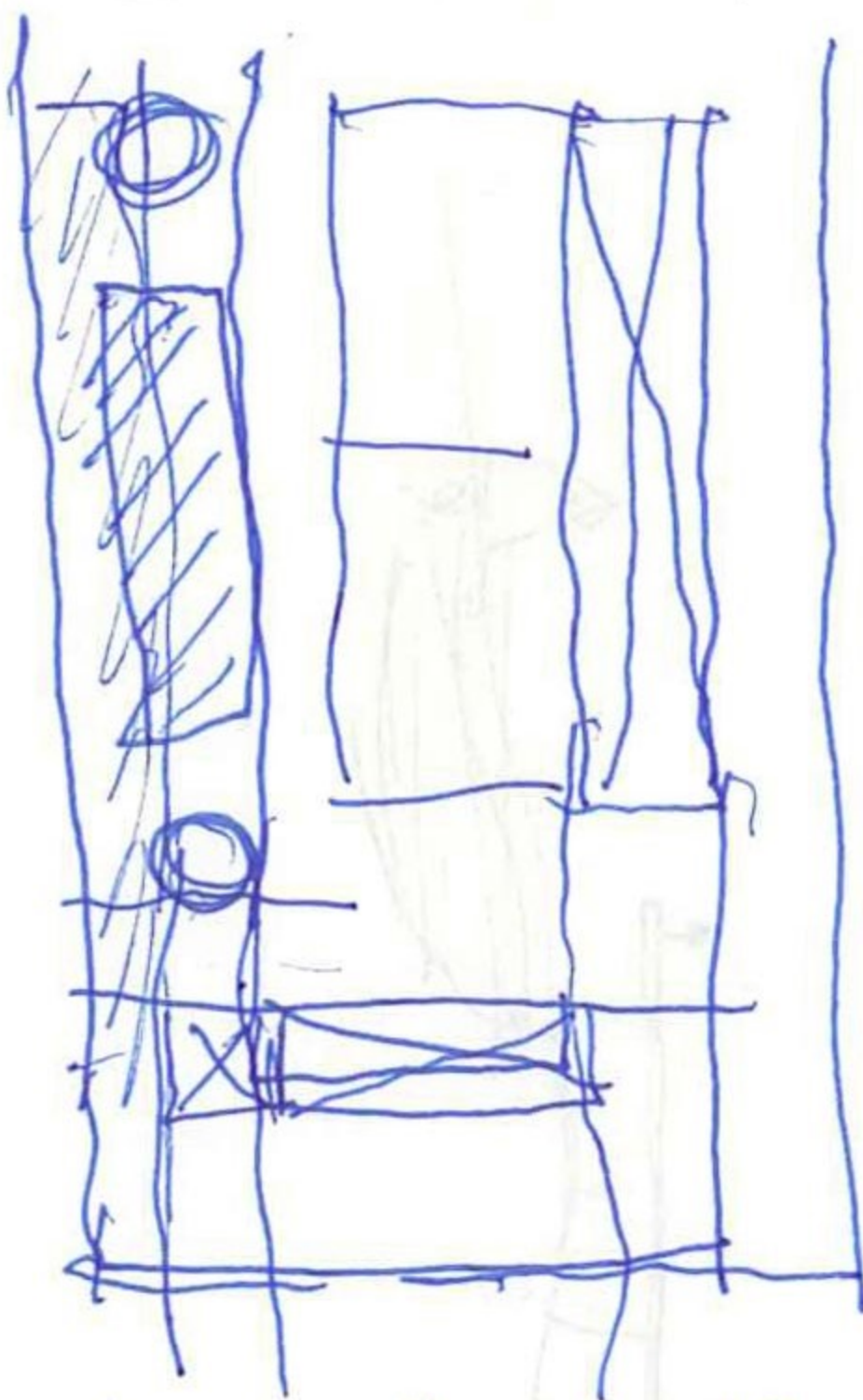






10 mayo 2016

Handwritten scribble



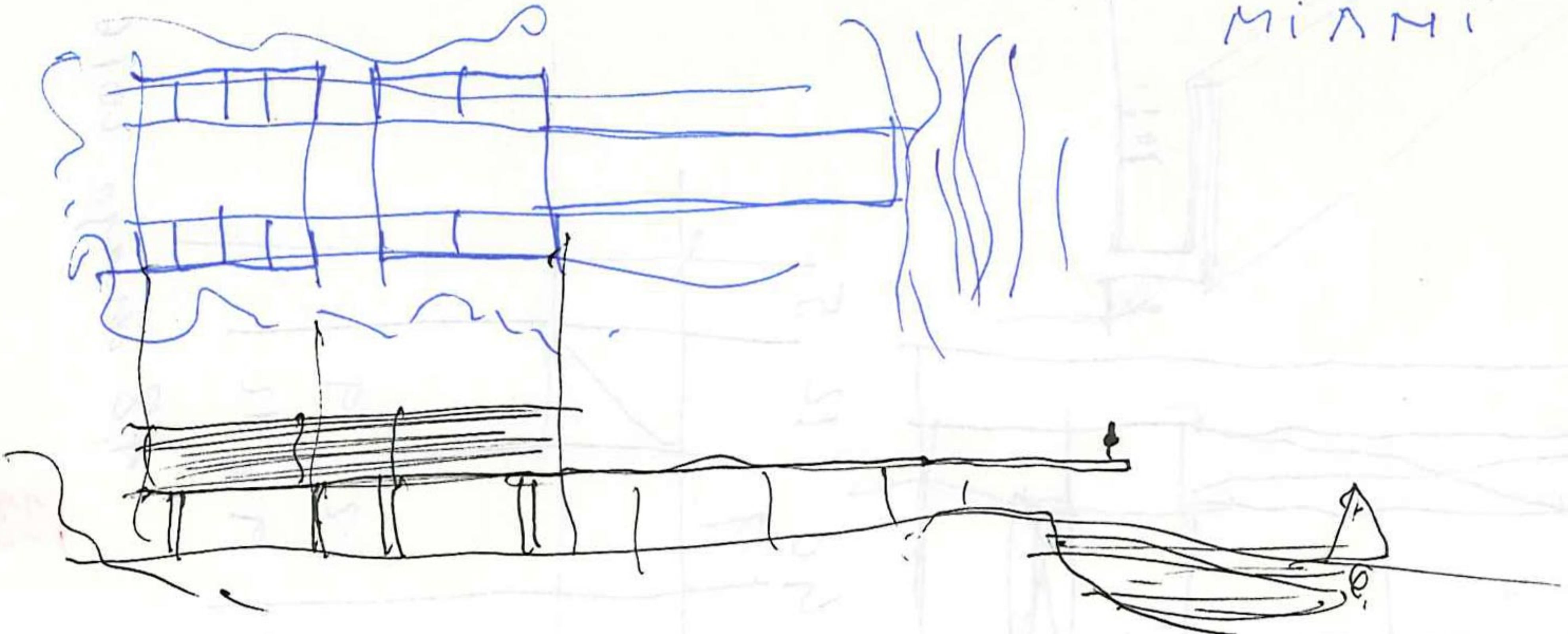
Handwritten scribbles and lines

48 mayo 2016

123



Miami

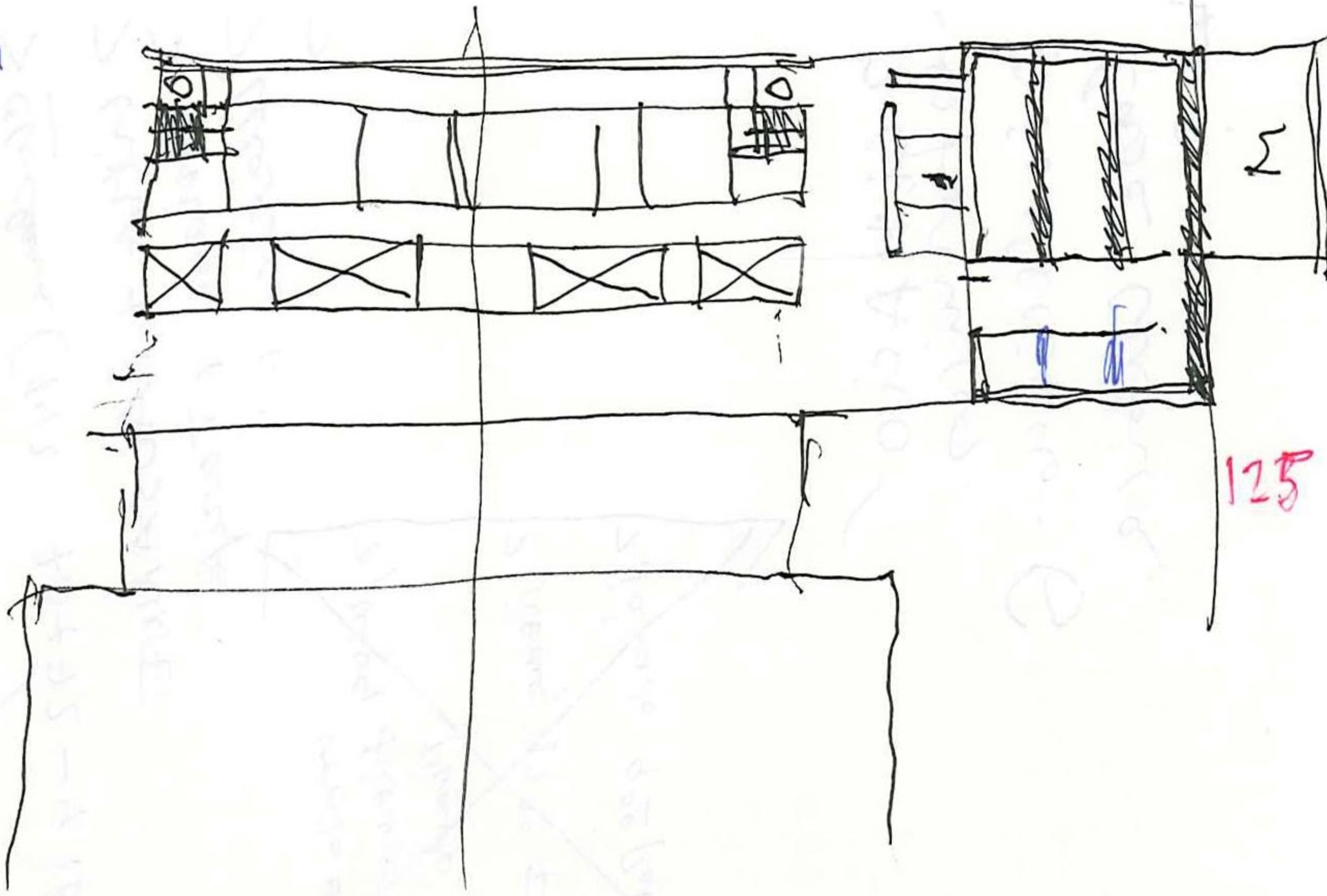


*NY*

16 Mayo 2016

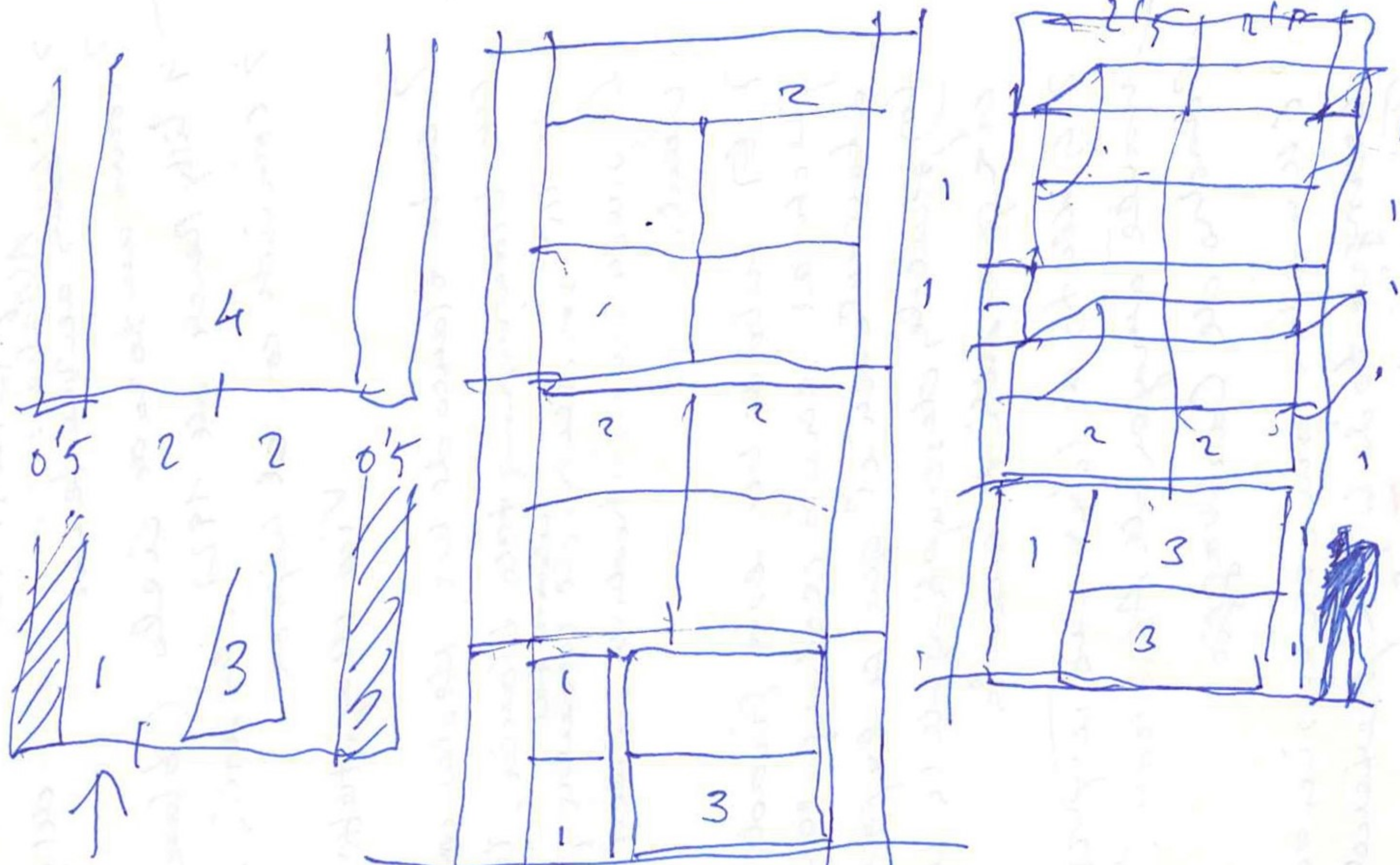


МА 21



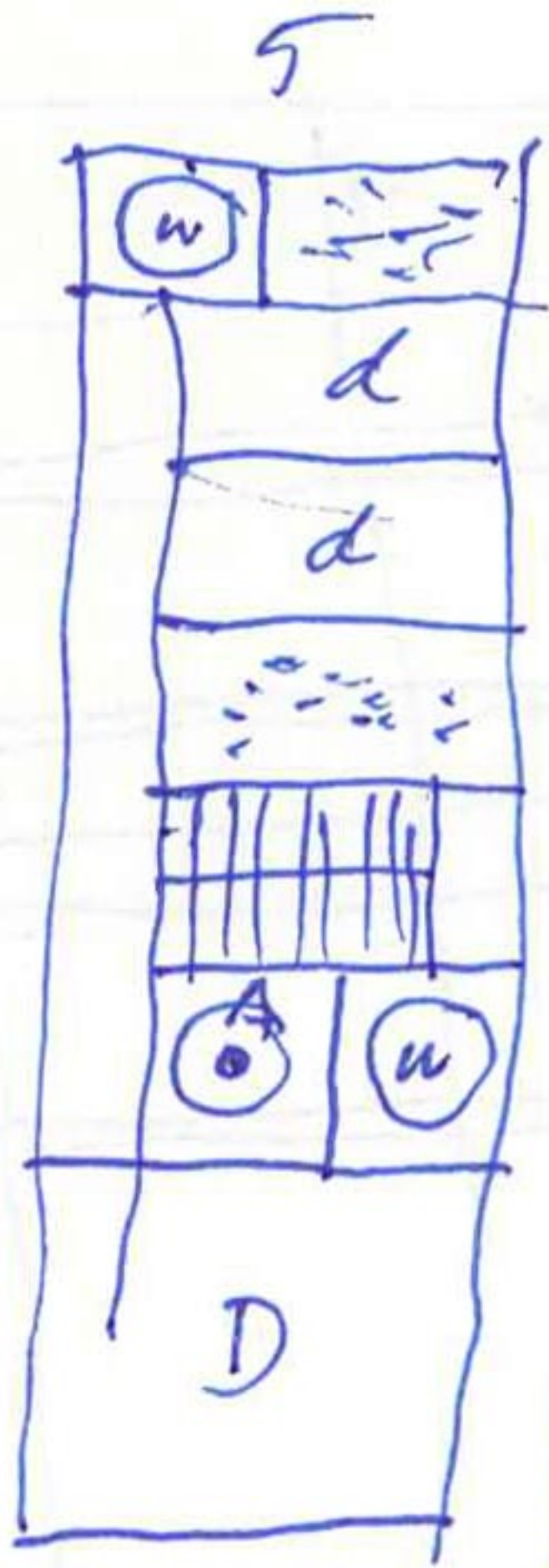
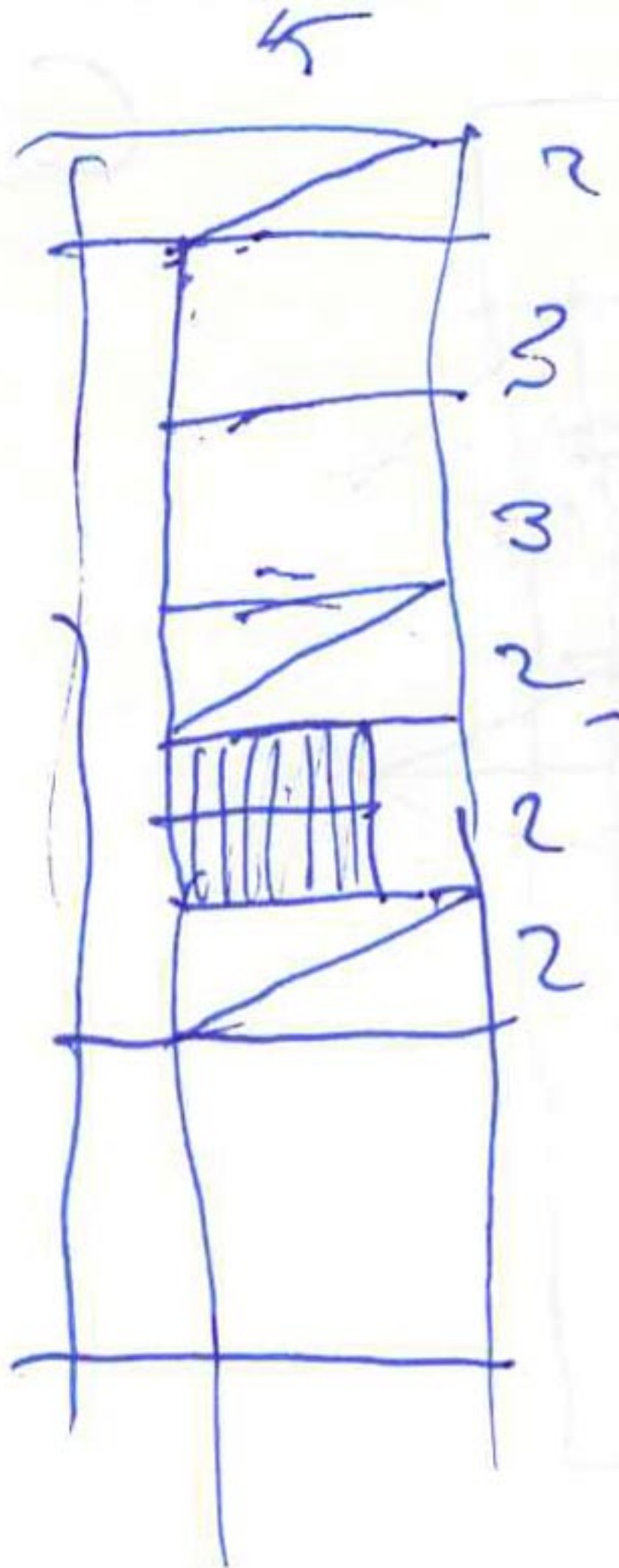
125

*[Handwritten signature]*

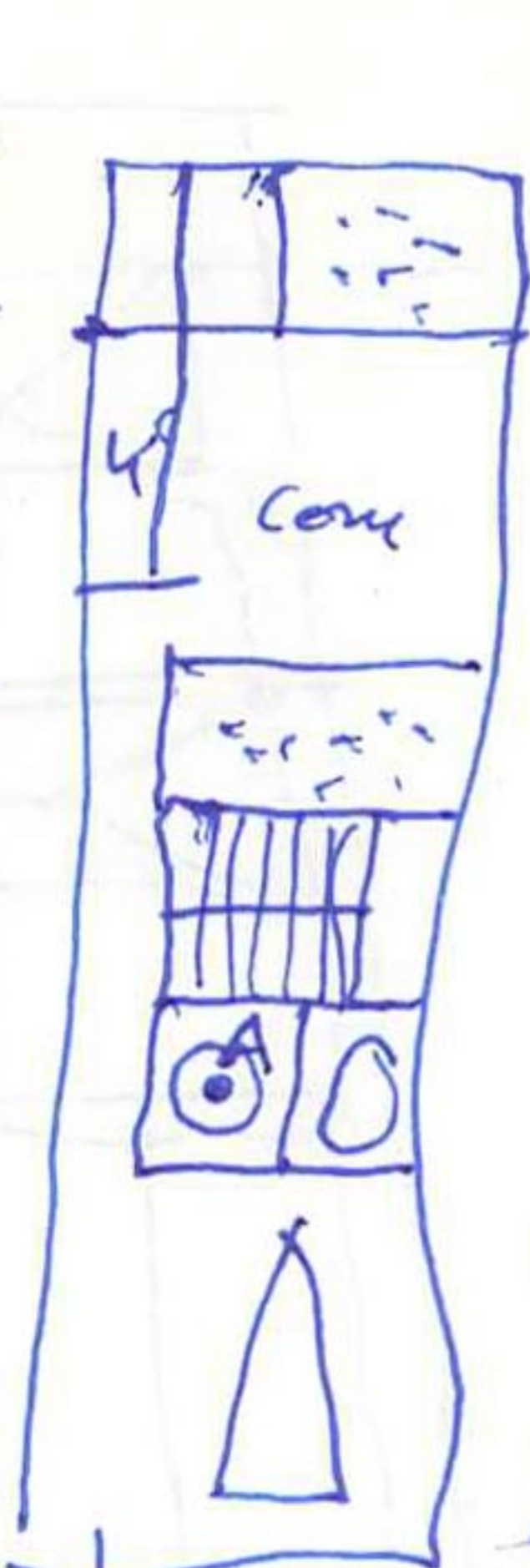


pisas cerámicas móviles.

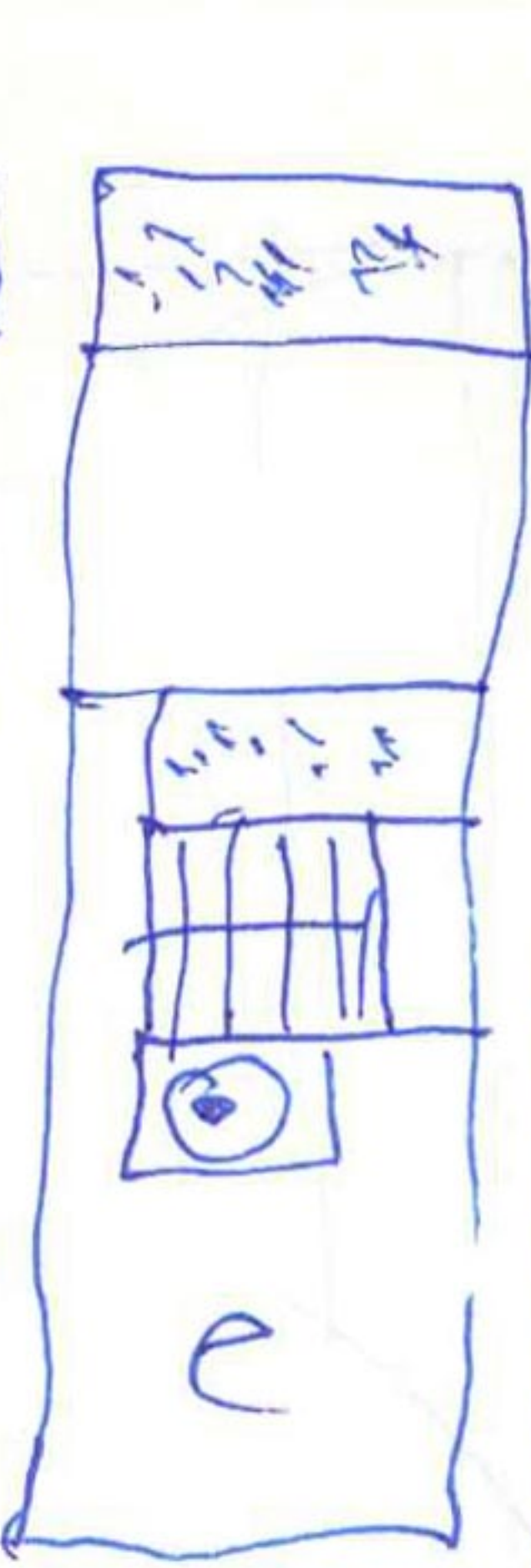
251



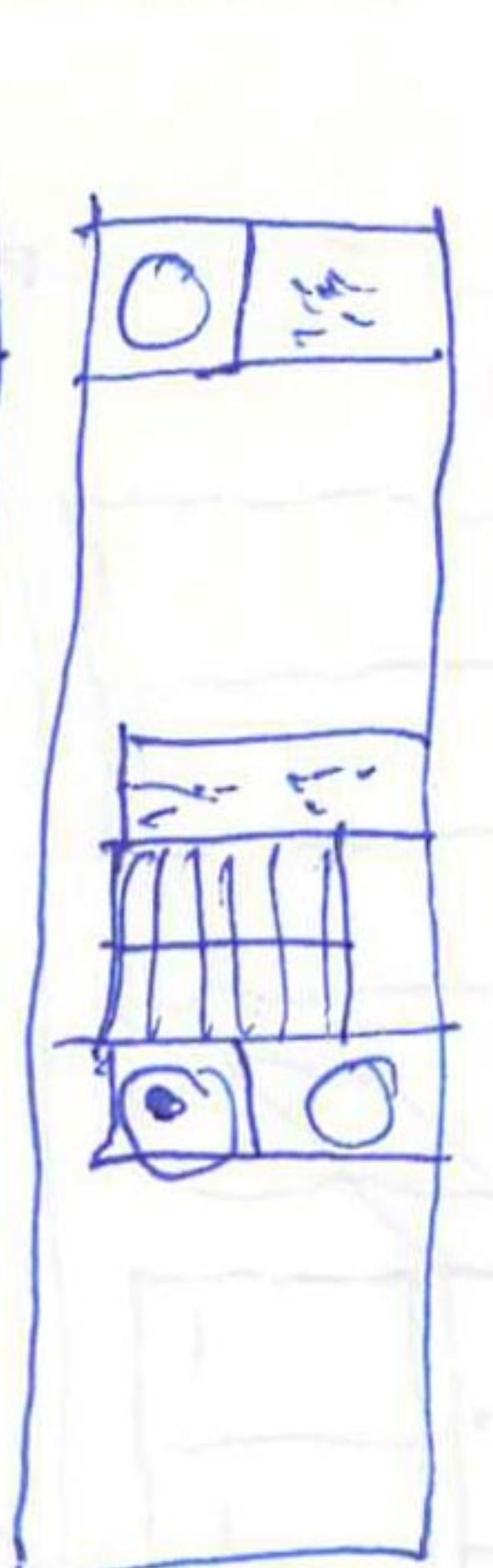
Coacina  
 p[er]uere  
 3 d.  
 coacina



t[er]za  
 entrada



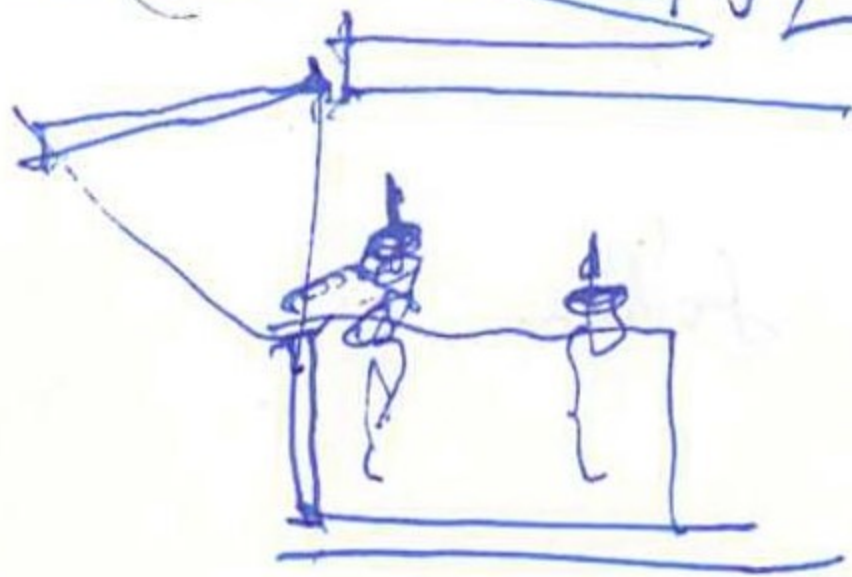
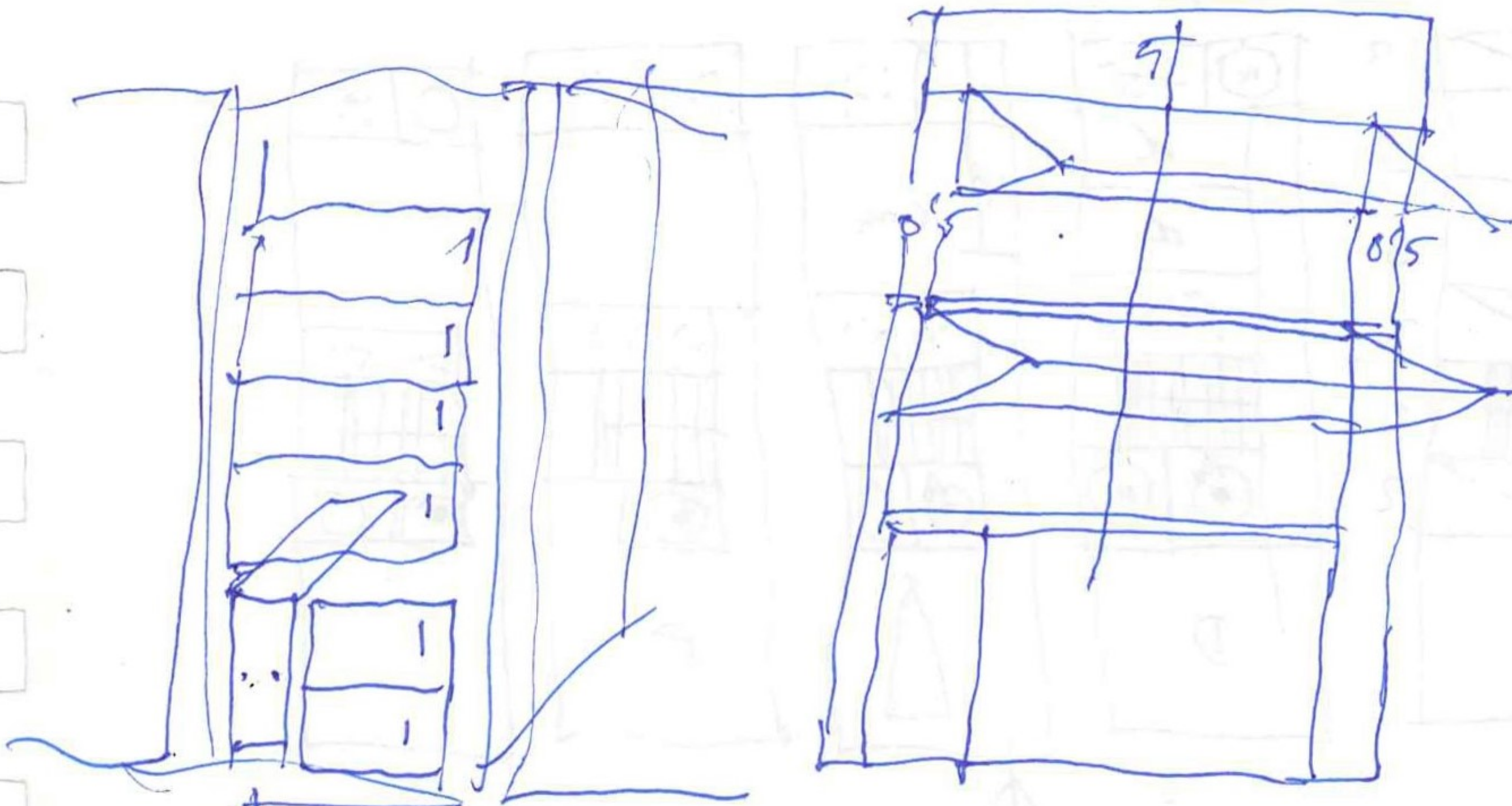
segunda  
 etapa



solta



C.S.



casa Santos 6 abril 2016



⑥ VAN DEN WEFY DEN

- 1) Francisco DOORN
- 2) JOSEPHUAN PÉREZ PRECIADO
- 3) NATIVIDAD PULIDO
- 4) SECOND CANVAS. M.P.



- 1 el señor
- 2 la virgen
- 3 San Juan
- 4 MARIA SACAOME
- 5 MARIA DE CLEOFAS
- 6 NICODEMO
- 7 JOSE de ANIMATA
- 8 Lauz
- 9 MAGDALENA

1433 - 1438

ÓLEO Sobre TABLA  
2'20 alto - 2'62 ancho (1399)

Rogier van der Weyden / TOURNAI  
Le pintó en LOVAINA  
Comprado por Maria de HUNGRÍA  
en 1564 fue robado por FELIPE II  
Lo tenía en el Palacio de PARDO  
pasa a EL ESCORIAL en 1566  
pasa al PRADO en 1939

5) REFLECTO GRAFÍA INFRAROJA

5) CLEOFAS